

## Product datasheet for **CS611402**

### Frozen Tissue Sections, Myometrium

#### Product data:

Product Type:	Frozen Sections
Disease State:	Normal
Diagnosis Category:	Normal
Tissue:	Myometrium
Frozen Sample ID:	FR00006A6C
Case ID:	CU0000001692
Tissue of Origin:	Myometrium
Site of Finding:	Myometrium
Appearance:	R
Sample Diagnosis (from Pathology Verification):	Within normal limits
Normal:	100%
Lesional:	0%
Tumor:	0%
Tumor Hypo/Acellular Stroma:	0%
Tumor Hypercellular Stroma:	0%
Necrosis:	0%
Pathology Verification notes from H&E review:	80% Myometrium, 20% Vessels
CASE Diagnosis (from medical center path report):	Adenocarcinoma of cervix
Age:	56
Gender:	Female
Tumor Grade:	FIGO G2: Moderately differentiated



[View online »](#)

Minimum Stage Grouping: III B

T (Extent of Primary Tumor): TX

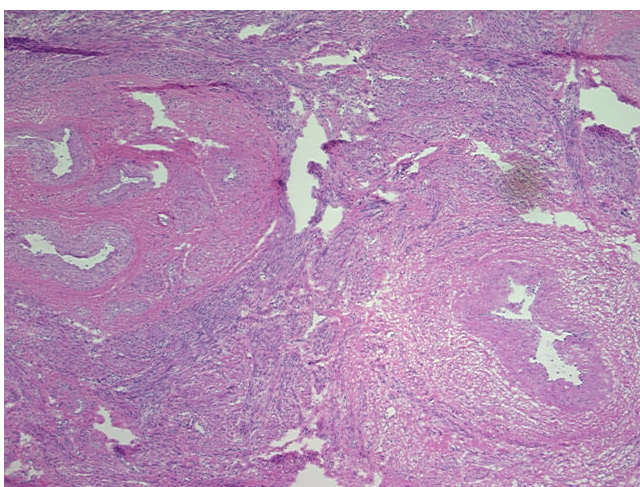
N (Lymph node metastasis): N1

M (Distant metastasis): MX

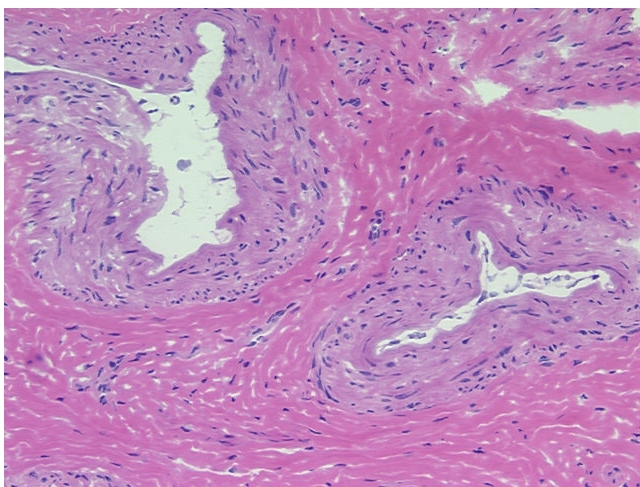
Storage: Store frozen tissue sections at -80°C.

Stability: All frozen tissue sections are stable for 1 year from date of purchase if stored at -80°C without repeated freeze/thaws.

### Product images:



4x Image



20x Image