

Product datasheet for CS601402

Frozen Tissue Sections, Kidney

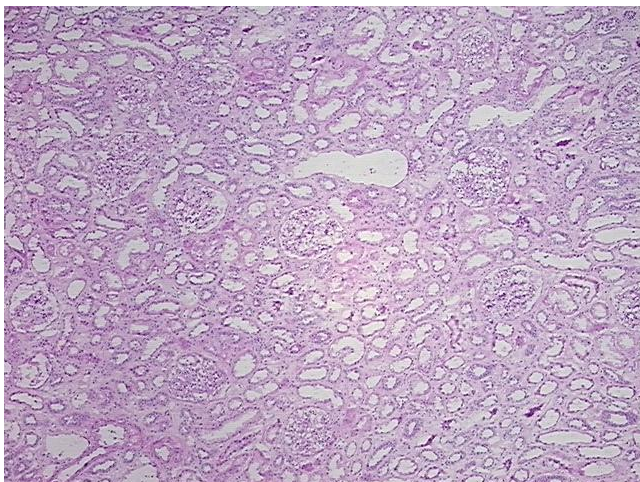
Product data:

| | |
|---|---|
| Product Type: | Frozen Sections |
| Disease State: | Other Disease |
| Diagnosis Category: | Nephritis |
| Tissue: | Kidney |
| Frozen Sample ID: | FR0000109C |
| Case ID: | CU0000000467 |
| Tissue of Origin: | Kidney |
| Site of Finding: | Kidney |
| Appearance: | L |
| Sample Diagnosis (from Pathology Verification): | Nephritis, tubulointerstitial, chronic |
| Normal: | 0% |
| Lesional: | 100% |
| Tumor: | 0% |
| Tumor Hypo/Acellular Stroma: | 0% |
| Tumor Hypercellular Stroma: | 0% |
| Necrosis: | 0% |
| Pathology Verification notes from H&E review: | 100% Cortex, 0% Medulla; Contains interstitial chronic inflammation |
| CASE Diagnosis (from medical center path report): | Carcinoma of kidney, renal cell, sarcomatoid |
| Age: | 46 |
| Gender: | Male |
| Tumor Grade: | Fuhrman G4: Nuclei bizarre and multilobated |

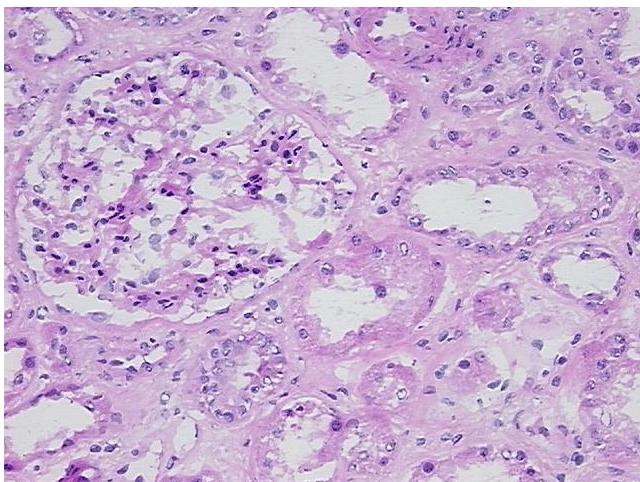


[View online »](#)

| | |
|------------------------------|--|
| Minimum Stage Grouping: | II |
| T (Extent of Primary Tumor): | T2 |
| N (Lymph node metastasis): | NX |
| M (Distant metastasis): | MX |
| Diagnostic Test Results: | Cytokeratin (Pan) ~ Keratin, Pan ! by IHC,Positive; Vimentin ~ VIM ! by IHC,Positive |
| Storage: | Store frozen tissue sections at -80°C. |
| Stability: | All frozen tissue sections are stable for 1 year from date of purchase if stored at -80°C without repeated freeze/thaws. |

Product images:

4x Image



20x Image