

Product datasheet for **CS600918**

Frozen Tissue Sections, Stomach

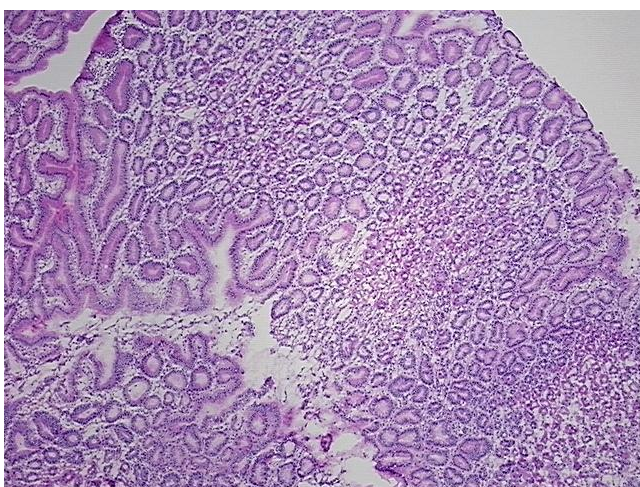
Product data:

Product Type:	Frozen Sections
Disease State:	Normal
Diagnosis Category:	Normal
Tissue:	Stomach
Frozen Sample ID:	FR00000C0A
Case ID:	CU00000000343
Tissue of Origin:	Stomach
Site of Finding:	Stomach
Appearance:	R
Sample Diagnosis (from Pathology Verification):	Within normal limits
Normal:	100%
Lesional:	0%
Tumor:	0%
Tumor Hypo/Acellular Stroma:	0%
Tumor Hypercellular Stroma:	0%
Necrosis:	0%
Pathology Verification notes from H&E review:	100% Mucosa, 0% Submucosa and Muscle
CASE Diagnosis (from medical center path report):	Carcinoma of esophagus, basaloid, squamous cell
Age:	73
Gender:	Female
Tumor Grade:	Not Reported

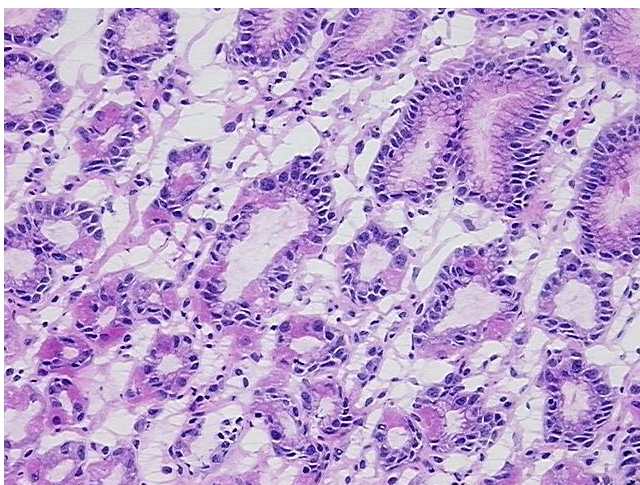


[View online »](#)

Minimum Stage Grouping:	I
T (Extent of Primary Tumor):	T1
N (Lymph node metastasis):	N0
M (Distant metastasis):	MX
Storage:	Store frozen tissue sections at -80°C.
Stability:	All frozen tissue sections are stable for 1 year from date of purchase if stored at -80°C without repeated freeze/thaws.

Product images:

4x Image



20x Image