

## Product datasheet for CS600882

### Frozen Tissue Sections, Parotid gland

#### Product data:

Product Type:	Frozen Sections
Disease State:	Other Disease
Diagnosis Category:	Hyperplasia
Tissue:	Salivary gland
Frozen Sample ID:	FR00000BA7
Case ID:	CU0000000330
Tissue of Origin:	Parotid gland
Site of Finding:	Parotid gland
Appearance:	L
Sample Diagnosis (from Pathology Verification):	Lymphoid hyperplasia of parotid gland
Normal:	0%
Lesional:	100%
Tumor:	0%
Tumor Hypo/Acellular Stroma:	0%
Tumor Hypercellular Stroma:	0%
Necrosis:	0%
Pathology Verification notes from H&E review:	10% Glandular epithelium, 85% Lymphoid stroma, 5% Fibrous tissue; Contains benign lymphoepithelial lesion
CASE Diagnosis (from medical center path report):	Follicular hyperplasia of lymph node
Age:	45
Gender:	Female



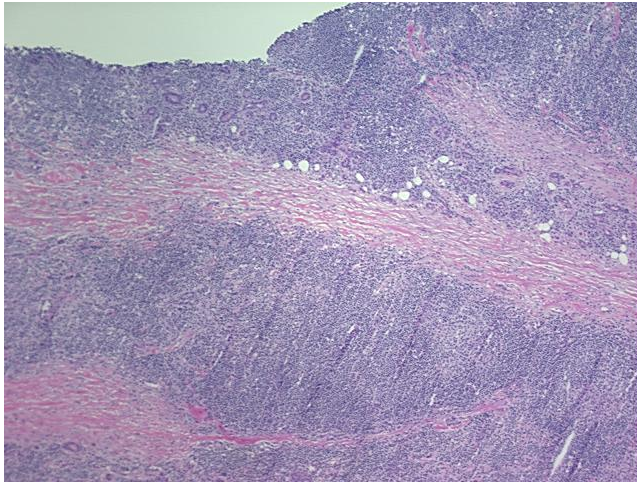
[View online »](#)

**Diagnostic Test Results:** CD3 ~ Leu4 ~ UCHT1 ! by IHC,Positive in non-tumor cells; Cytokeratin (Pan) ~ Keratin, Pan ! by IHC,Negative; CD19 ~ B4 ~ Leu12 ! by IHC,Positive; Kappa light chain ! by IHC,Positive; CD8 ~ Leu2a ~ T8 ! by IHC,Positive; Lambda light chain ! b

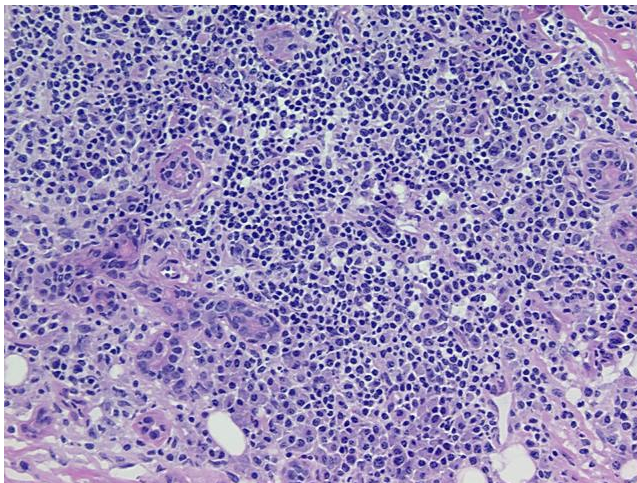
**Storage:** Store frozen tissue sections at -80°C.

**Stability:** All frozen tissue sections are stable for 1 year from date of purchase if stored at -80°C without repeated freeze/thaws.

**Product images:**



4x Image



20x Image