

## Product datasheet for **CS600557**

### Frozen Tissue Sections, Gallbladder

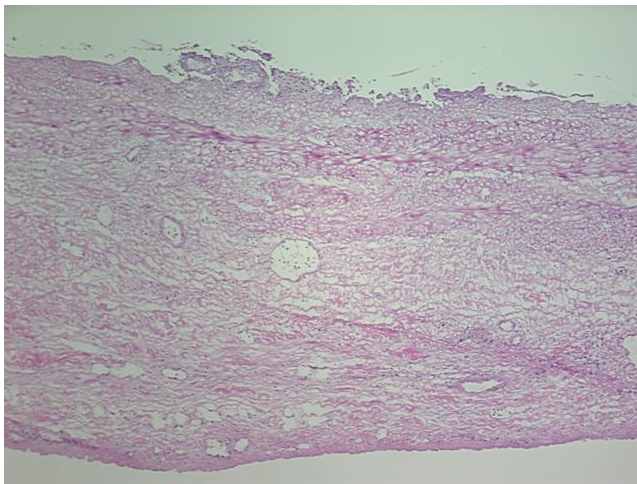
#### Product data:

Product Type:	Frozen Sections
Disease State:	Other Disease
Diagnosis Category:	Gallbladder Disease
Tissue:	Gallbladder
Frozen Sample ID:	FR000007C7
Case ID:	CU0000000210
Tissue of Origin:	Gallbladder
Site of Finding:	Gallbladder
Appearance:	L
Sample Diagnosis (from Pathology Verification):	Cholecystitis, chronic
Normal:	98%
Lesional:	2%
Tumor:	0%
Tumor Hypo/Acellular Stroma:	0%
Tumor Hypercellular Stroma:	0%
Necrosis:	0%
Pathology Verification notes from H&E review:	Normal component consists of 100% submucosa, muscle, and serosa; Non-neoplastic lesion is chronic cholecystitis
CASE Diagnosis (from medical center path report):	Adenoma of pancreas, microcystic
Age:	70
Gender:	Male
Tumor Grade:	Not Reported

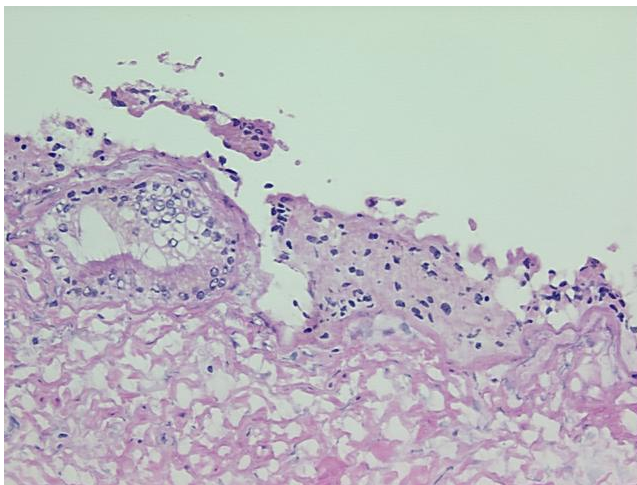


[View online »](#)

<b>Minimum Stage Grouping:</b>	Not Reported
<b>T (Extent of Primary Tumor):</b>	Not Reported
<b>N (Lymph node metastasis):</b>	Not Reported
<b>M (Distant metastasis):</b>	Not Reported
<b>Storage:</b>	Store frozen tissue sections at -80°C.
<b>Stability:</b>	All frozen tissue sections are stable for 1 year from date of purchase if stored at -80°C without repeated freeze/thaws.

**Product images:**


4x Image



20x Image