

Product datasheet for **CS600553**

Frozen Tissue Sections, Gallbladder

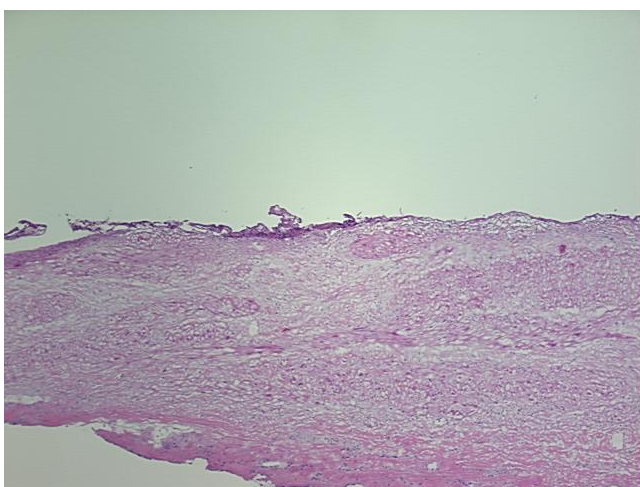
Product data:

Product Type:	Frozen Sections
Disease State:	Other Disease
Diagnosis Category:	Gallbladder Disease
Tissue:	Gallbladder
Frozen Sample ID:	FR000007C1
Case ID:	CU0000000210
Tissue of Origin:	Gallbladder
Site of Finding:	Gallbladder
Appearance:	L
Sample Diagnosis (from Pathology Verification):	Cholecystitis, chronic
Normal:	98%
Lesional:	2%
Tumor:	0%
Tumor Hypo/Acellular Stroma:	0%
Tumor Hypercellular Stroma:	0%
Necrosis:	0%
Pathology Verification notes from H&E review:	Normal component consists of 100% submucosa, muscle, and serosa; Non-neoplastic lesion is chronic cholecystitis
CASE Diagnosis (from medical center path report):	Adenoma of pancreas, microcystic
Age:	70
Gender:	Male
Tumor Grade:	Not Reported

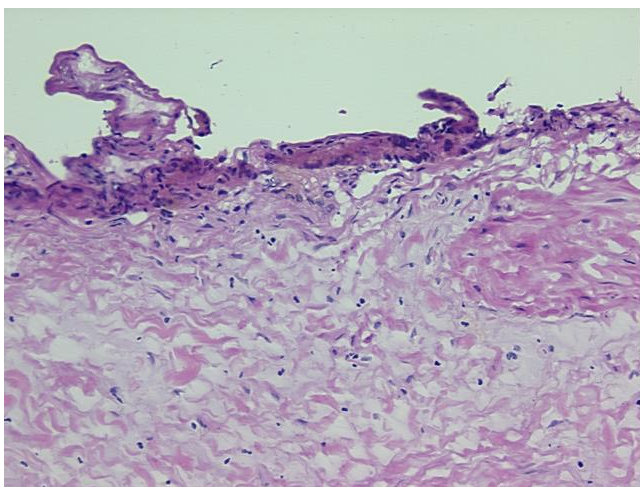


[View online »](#)

Minimum Stage Grouping:	Not Reported
T (Extent of Primary Tumor):	Not Reported
N (Lymph node metastasis):	Not Reported
M (Distant metastasis):	Not Reported
Storage:	Store frozen tissue sections at -80°C.
Stability:	All frozen tissue sections are stable for 1 year from date of purchase if stored at -80°C without repeated freeze/thaws.

Product images:

4x Image



20x Image