

Product datasheet for CS558481

Frozen Tissue Sections, Lung

Product data:

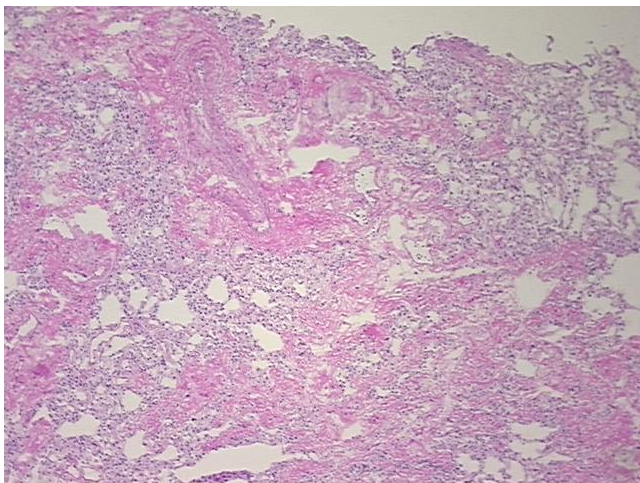
| | |
|---|---|
| Product Type: | Frozen Sections |
| Disease State: | Other Disease |
| Diagnosis Category: | Fibrosis |
| Tissue: | Lung |
| Frozen Sample ID: | FR000362C5 |
| Case ID: | CI7000000492 |
| Tissue of Origin: | Lung |
| Site of Finding: | Lung |
| Appearance: | L |
| Sample Diagnosis (from Pathology Verification): | Fibrosis |
| Normal: | 0% |
| Lesional: | 100% |
| Tumor: | 0% |
| Tumor Hypo/Acellular Stroma: | 0% |
| Tumor Hypercellular Stroma: | 0% |
| Necrosis: | 0% |
| Pathology Verification notes from H&E review: | Non Tumor Structures: 60% Alveoli, 20% Bronchioles, 20% Fibrovascular septa |
| CASE Diagnosis (from medical center path report): | Malignant melanoma, metastatic |
| Age: | 54 |
| Gender: | Female |
| Race: | White or Caucasian |



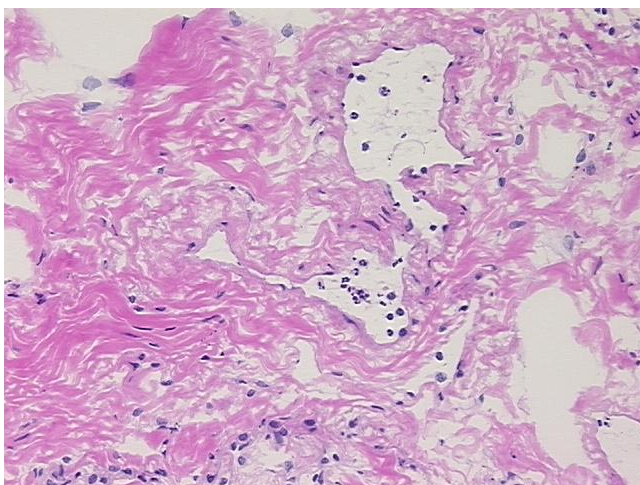
[View online »](#)

| | |
|-------------------------------------|--|
| Tumor Grade: | Not Reported |
| Minimum Stage Grouping: | IV |
| T (Extent of Primary Tumor): | TX |
| N (Lymph node metastasis): | NX |
| M (Distant metastasis): | M1b |
| Diagnostic Test Results: | Cytokeratin (Pan) ~ Keratin, Pan ! by IHC,Negative; S100 protein,Positive, diffuse; HMB45 melanoma antigen ~ GP100 ! by IHC,Positive, strong |
| Storage: | Store frozen tissue sections at -80°C. |
| Stability: | All frozen tissue sections are stable for 1 year from date of purchase if stored at -80°C without repeated freeze/thaws. |

Product images:



4x Image



20x Image