

Product datasheet for **CS554030**

Frozen Tissue Sections, Kidney

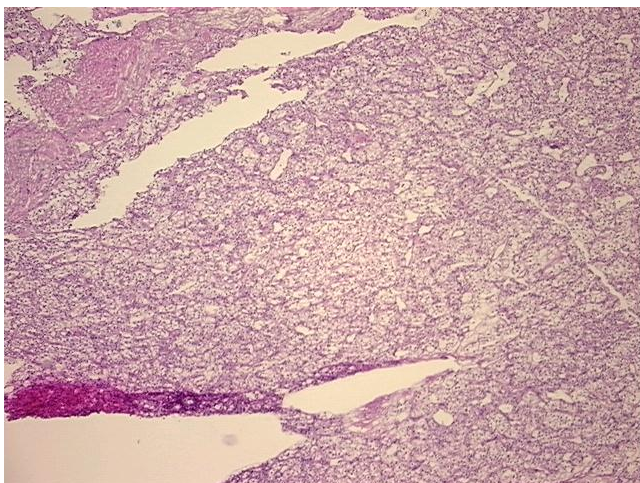
Product data:

| | |
|---|---|
| Product Type: | Frozen Sections |
| Disease State: | Cancer |
| Diagnosis Category: | Renal Cell Carcinoma |
| Tissue: | Kidney |
| Frozen Sample ID: | FR00043CBF |
| Case ID: | CI0000020853 |
| Tissue of Origin: | Kidney |
| Site of Finding: | Kidney |
| Appearance: | T |
| Sample Diagnosis (from Pathology Verification): | Carcinoma of kidney, renal cell, clear cell |
| Normal: | 10% |
| Lesional: | 0% |
| Tumor: | 85% |
| Tumor Hypo/Acellular Stroma: | 5% |
| Tumor Hypercellular Stroma: | 0% |
| Necrosis: | 0% |
| CASE Diagnosis (from medical center path report): | Carcinoma of kidney, renal cell, clear cell |
| Age: | 71 |
| Gender: | Male |
| Race: | White or Caucasian |
| Tumor Grade: | Fuhrman G1: Nuclei round, uniform |

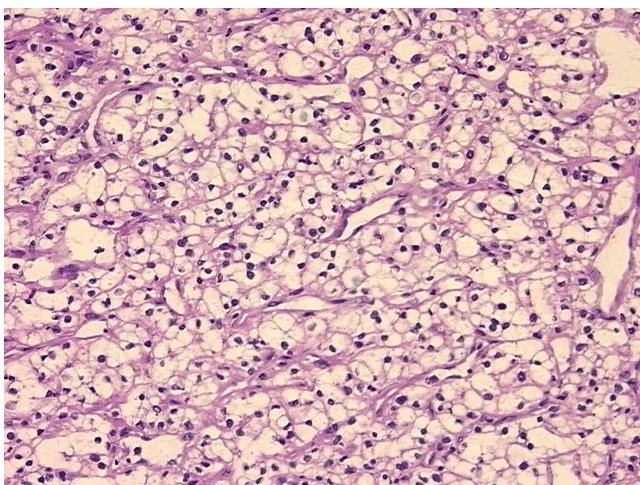


[View online »](#)

| | |
|------------------------------|--|
| Minimum Stage Grouping: | III |
| T (Extent of Primary Tumor): | T3b |
| N (Lymph node metastasis): | NX |
| M (Distant metastasis): | MX |
| Diagnostic Test Results: | Proliferation index ~ PI,Moderate; EGFR,Other gene status; ERBB1 ~ EGFR ~ Epidermal growth factor receptor ! by IHC,Positive |
| Storage: | Store frozen tissue sections at -80°C. |
| Stability: | All frozen tissue sections are stable for 1 year from date of purchase if stored at -80°C without repeated freeze/thaws. |

Product images:

4x Image



20x Image