

Product datasheet for **CS544189**

Frozen Tissue Sections, Cartilage: femur, distal

Product data:

Product Type:	Frozen Sections
Disease State:	Normal
Diagnosis Category:	Normal
Tissue:	Cartilage
Frozen Sample ID:	FR5B346C8F
Case ID:	CI0000018004
Tissue of Origin:	Cartilage: femur, distal
Site of Finding:	Cartilage: femur, distal
Appearance:	R
Sample Diagnosis (from Pathology Verification):	Within normal limits
Normal:	100%
Lesional:	0%
Tumor:	0%
Tumor Hypo/Acellular Stroma:	0%
Tumor Hypercellular Stroma:	0%
Necrosis:	0%
Pathology Verification notes from H&E review:	Non Tumor Structures: 60% Chondrocytes, 40% Matrix
CASE Diagnosis (from medical center path report):	Arthritis, rheumatoid
Age:	62
Gender:	Female
Race:	White or Caucasian

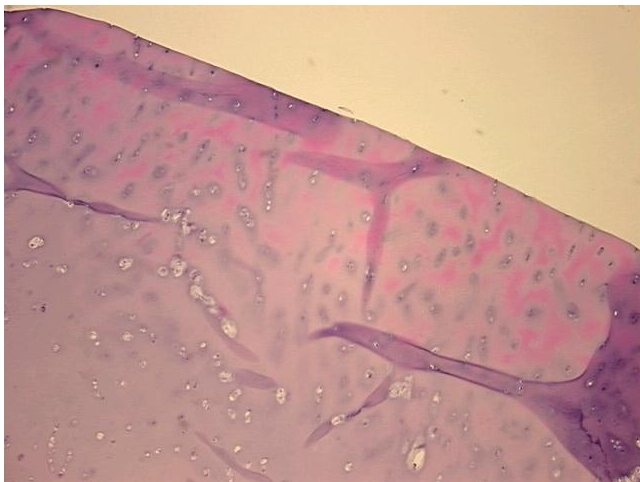


[View online »](#)

Storage: Store frozen tissue sections at -80°C.

Stability: All frozen tissue sections are stable for 1 year from date of purchase if stored at -80°C without repeated freeze/thaws.

Product images:



4x Image



20x Image