

Product datasheet for **CS541772**

Frozen Tissue Sections, Uterus

Product data:

| | |
|---|--|
| Product Type: | Frozen Sections |
| Disease State: | Normal |
| Diagnosis Category: | Normal |
| Tissue: | Uterus |
| Frozen Sample ID: | FR0003F002 |
| Case ID: | CI0000016985 |
| Tissue of Origin: | Uterus |
| Site of Finding: | Uterus |
| Appearance: | R |
| Sample Diagnosis (from Pathology Verification): | Endometrium, proliferative |
| Normal: | 100% |
| Lesional: | 0% |
| Tumor: | 0% |
| Tumor Hypo/Acellular Stroma: | 0% |
| Tumor Hypercellular Stroma: | 0% |
| Necrosis: | 0% |
| Pathology Verification notes from H&E review: | Non Tumor Structures: 25% Glands, 15% Stroma, 60% Myometrium |
| CASE Diagnosis (from medical center path report): | Crohns disease |
| Age: | 30 |
| Gender: | Female |
| Race: | White or Caucasian |

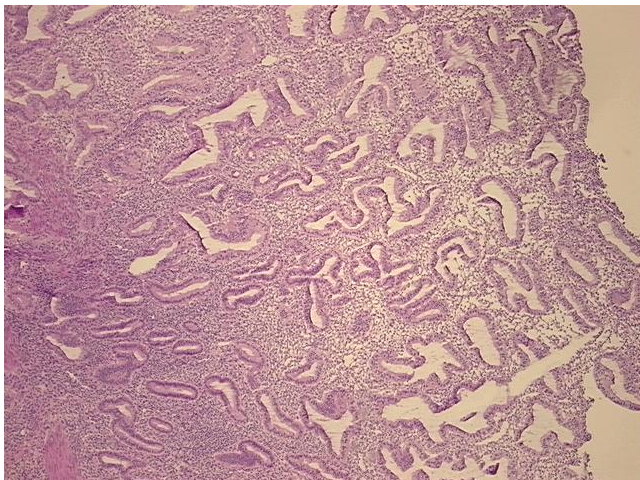


[View online »](#)

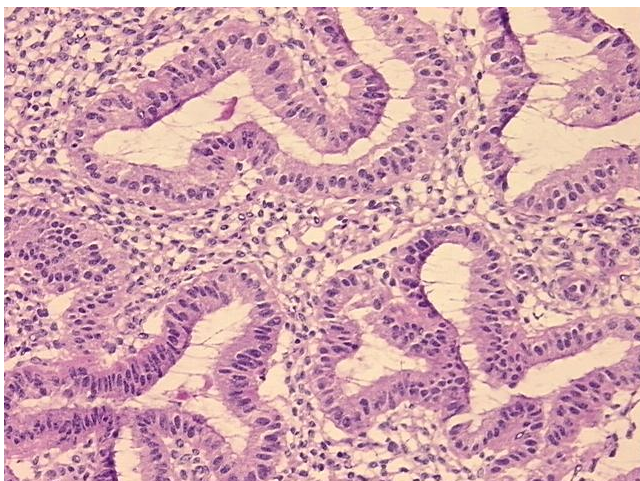
Storage: Store frozen tissue sections at -80°C .

Stability: All frozen tissue sections are stable for 1 year from date of purchase if stored at -80°C without repeated freeze/thaws.

Product images:



4x Image



20x Image