

Product datasheet for **CS529146**

Frozen Tissue Sections, Lung

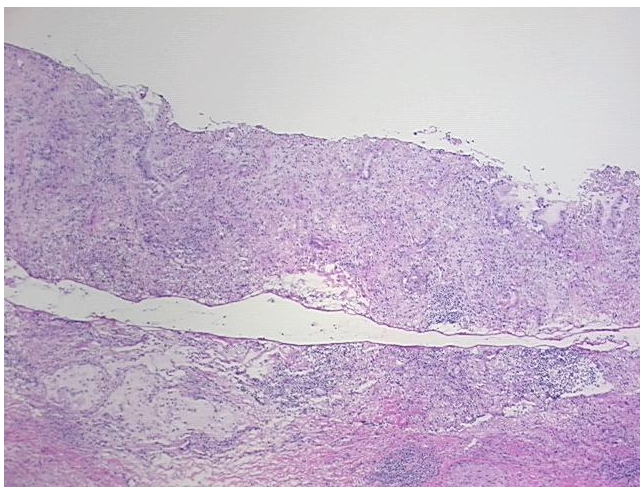
Product data:

Product Type:	Frozen Sections
Disease State:	Cancer
Diagnosis Category:	Lung Cancer
Tissue:	Lung
Frozen Sample ID:	FR00032FA1
Case ID:	CI0000010916
Tissue of Origin:	Lung
Site of Finding:	Lung
Appearance:	T
Sample Diagnosis (from Pathology Verification):	Adenocarcinoma of lung
Normal:	0%
Lesional:	70%
Tumor:	15%
Tumor Hypo/Acellular Stroma:	5%
Tumor Hypercellular Stroma:	10%
Necrosis:	0%
Pathology Verification notes from H&E review:	Tumor Stroma (Cellular): Desmoplastic reaction, Inflammatory cells; Tumor Stroma (Hypo/Acellular): Fibrosis; Lesion (70%): Fibrous scar 100%; Inflammation: Moderate Mixed inflammatory infiltrate
CASE Diagnosis (from medical center path report):	Adenocarcinoma of lung
Age:	72
Gender:	Female

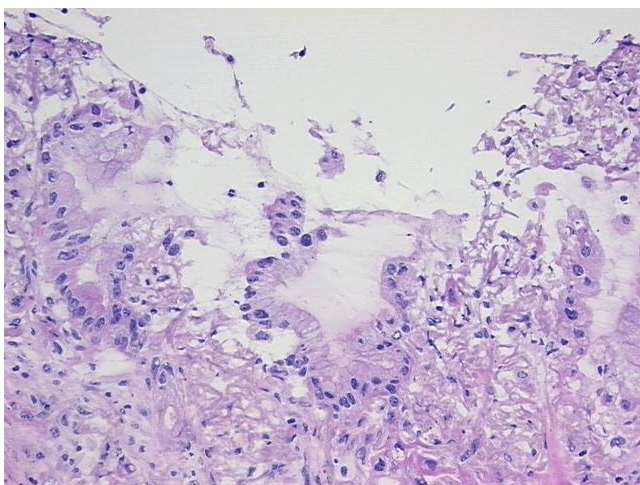


[View online »](#)

Race:	White or Caucasian
Tumor Grade:	AJCC G2: Moderately differentiated
Minimum Stage Grouping:	IB
T (Extent of Primary Tumor):	T2
N (Lymph node metastasis):	N0
M (Distant metastasis):	MX
Storage:	Store frozen tissue sections at -80°C.
Stability:	All frozen tissue sections are stable for 1 year from date of purchase if stored at -80°C without repeated freeze/thaws.

Product images:

4x Image



20x Image