

## Product datasheet for CS528111

### Frozen Tissue Sections, Colon

#### Product data:

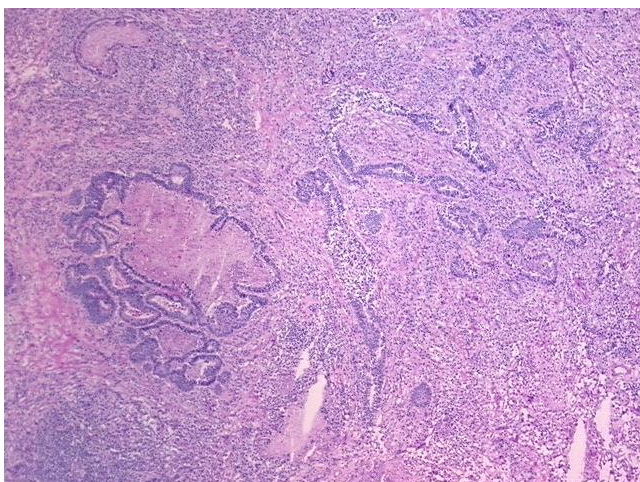
Product Type:	Frozen Sections
Disease State:	Cancer
Diagnosis Category:	Colorectal Cancer
Tissue:	Colon
Frozen Sample ID:	FR0002DA69
Case ID:	CI0000010411
Tissue of Origin:	Colon
Site of Finding:	Lung
Appearance:	T
Sample Diagnosis (from Pathology Verification):	Adenocarcinoma of colon, metastatic
Normal:	10%
Lesional:	0%
Tumor:	25%
Tumor Hypo/Acellular Stroma:	0%
Tumor Hypercellular Stroma:	60%
Necrosis:	5%
Pathology Verification notes from H&E review:	tumor stroma contains fibroblasts, prominent lymphoplasmacytic infiltrate, and scattered neutrophils
CASE Diagnosis (from medical center path report):	Adenocarcinoma of colon, metastatic
Age:	80
Gender:	Female
Race:	White or Caucasian



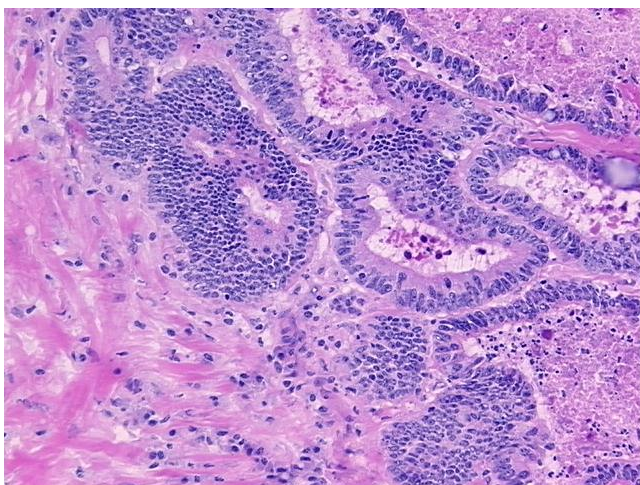
[View online »](#)

<b>Tumor Grade:</b>	Not Reported
<b>Minimum Stage Grouping:</b>	IV
<b>T (Extent of Primary Tumor):</b>	TX
<b>N (Lymph node metastasis):</b>	NX
<b>M (Distant metastasis):</b>	M1
<b>Diagnostic Test Results:</b>	Cytokeratin 7 ~ CK7 ! by IHC,Negative; Cytokeratin 20 ~ CK20 ! by IHC,Positive; Thyroid transcription factor 1 ~ TTF1 ! by IHC,Negative
<b>Storage:</b>	Store frozen tissue sections at -80°C.
<b>Stability:</b>	All frozen tissue sections are stable for 1 year from date of purchase if stored at -80°C without repeated freeze/thaws.

### Product images:



4x Image



20x Image