

Product datasheet for CS521800

Frozen Tissue Sections, Breast

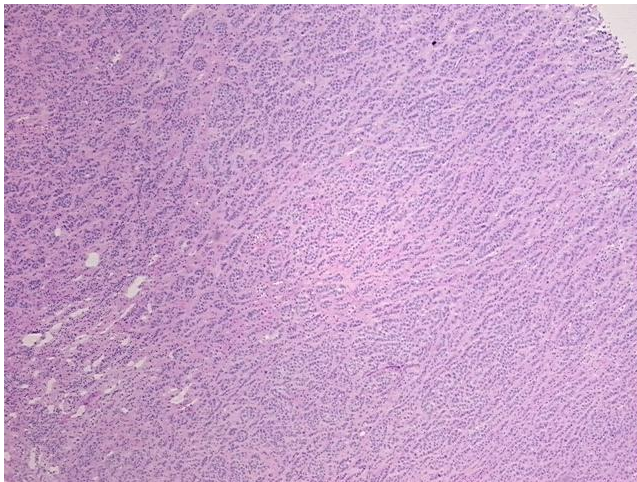
Product data:

Product Type:	Frozen Sections
Disease State:	Cancer
Diagnosis Category:	Breast Cancer
Tissue:	Breast
Frozen Sample ID:	FR65EE01B7
Case ID:	CI0000008618
Tissue of Origin:	Breast
Site of Finding:	Adrenal gland
Appearance:	T
Sample Diagnosis (from Pathology Verification):	Adenocarcinoma of breast, lobular, metastatic
Normal:	0%
Lesional:	0%
Tumor:	95%
Tumor Hypo/Acellular Stroma:	5%
Tumor Hypercellular Stroma:	0%
Necrosis:	0%
Pathology Verification notes from H&E review:	Tumor: patient also has primary kidney cancer; Other Features/Comments: hypo/acellular stroma: 100% fibrosis
CASE Diagnosis (from medical center path report):	Carcinoma of kidney, renal cell, clear cell
Age:	76
Gender:	Female
Race:	White or Caucasian

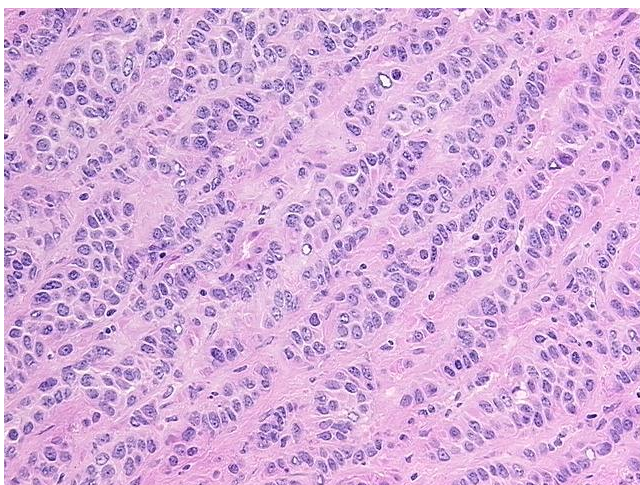


[View online »](#)

Tumor Grade:	Fuhrman G2: Nuclei slightly irregular
Minimum Stage Grouping:	I
T (Extent of Primary Tumor):	T1
N (Lymph node metastasis):	N0
M (Distant metastasis):	MX
Diagnostic Test Results:	Cytokeratin (Pan) ~ Keratin, Pan ! by IHC,Reported as Performed or Reviewed; Vimentin ~ VIM ! by IHC,Reported as Performed or Reviewed; Progesterone receptor ~ PR ! by IHC,Positive; Estrogen receptor ~ ER ! by IHC,Positive; Cytokeratin 7 ~ CK7 !
Storage:	Store frozen tissue sections at -80°C.
Stability:	All frozen tissue sections are stable for 1 year from date of purchase if stored at -80°C without repeated freeze/thaws.

Product images:

4x Image



20x Image