

Product datasheet for **CS511797**

Frozen Tissue Sections, Lung

Product data:

Product Type:	Frozen Sections
Disease State:	Cancer
Diagnosis Category:	Lung Cancer
Tissue:	Lung
Frozen Sample ID:	FR5B3384EA
Case ID:	CI0000006806
Tissue of Origin:	Lung
Site of Finding:	Lung
Appearance:	T
Sample Diagnosis (from Pathology Verification):	Carcinoma of lung, squamous cell
Normal:	0%
Lesional:	0%
Tumor:	25%
Tumor Hypo/Acellular Stroma:	0%
Tumor Hypercellular Stroma:	25%
Necrosis:	50%
CASE Diagnosis (from medical center path report):	Carcinoma of lung, squamous cell
Age:	81
Gender:	Male
Race:	White or Caucasian
Tumor Grade:	AJCC G3: Poorly differentiated



[View online »](#)

Minimum Stage Grouping: IA

T (Extent of Primary Tumor): T1

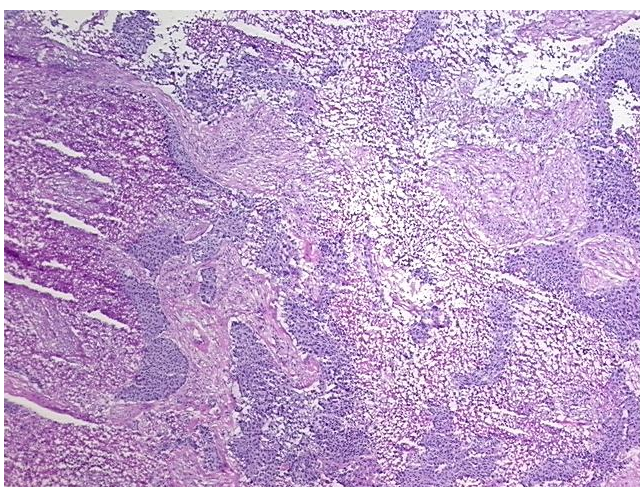
N (Lymph node metastasis): N0

M (Distant metastasis): MX

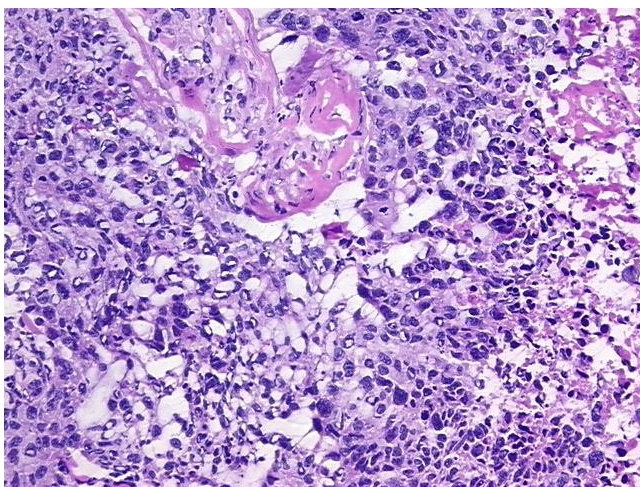
Storage: Store frozen tissue sections at -80°C.

Stability: All frozen tissue sections are stable for 1 year from date of purchase if stored at -80°C without repeated freeze/thaws.

Product images:



4x Image



20x Image