

Product datasheet for **CS506783**

Frozen Tissue Sections, Lung

Product data:

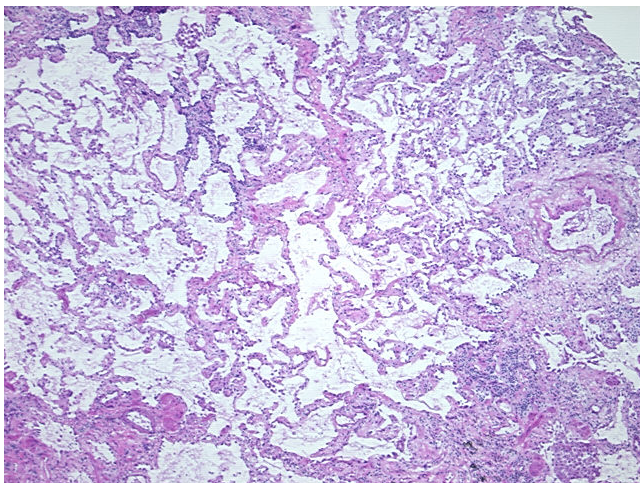
Product Type:	Frozen Sections
Disease State:	Other Disease
Diagnosis Category:	Inflammation (various)
Tissue:	Lung
Frozen Sample ID:	FR5B3382A0
Case ID:	CI0000005593
Tissue of Origin:	Lung
Site of Finding:	Lung
Appearance:	L
Sample Diagnosis (from Pathology Verification):	Pneumonitis, chronic
Normal:	0%
Lesional:	100%
Tumor:	0%
Tumor Hypo/Acellular Stroma:	0%
Tumor Hypercellular Stroma:	0%
Necrosis:	0%
Pathology Verification notes from H&E review:	55% alveoli, 20% bronchioles, 25% fibrovascular tissue; contains interstitial fibrosis and chronic inflammation
CASE Diagnosis (from medical center path report):	Carcinoma of lung, small cell
Age:	76
Gender:	Male
Race:	White or Caucasian



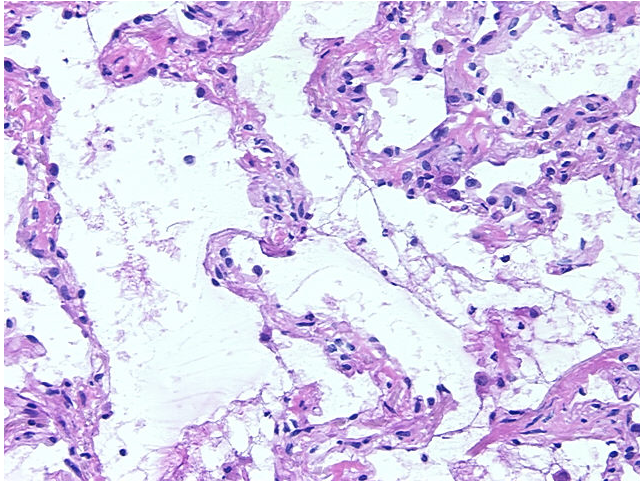
[View online »](#)

Tumor Grade:	Not Reported
Minimum Stage Grouping:	IIIB
T (Extent of Primary Tumor):	T4
N (Lymph node metastasis):	N2
M (Distant metastasis):	MX
Diagnostic Test Results:	Cytokeratin (Pan) ~ Keratin, Pan ! by IHC,Positive; Synaptophysin ~ SYN ! by IHC,Positive; Chromogranin A ~ Parathyroid secretory protein 1 ! by IHC,Positive
Storage:	Store frozen tissue sections at -80°C.
Stability:	All frozen tissue sections are stable for 1 year from date of purchase if stored at -80°C without repeated freeze/thaws.

Product images:



4x Image



20x Image