

Product datasheet for **CR562826**

Tissue Total RNA, Ovary

Product data:

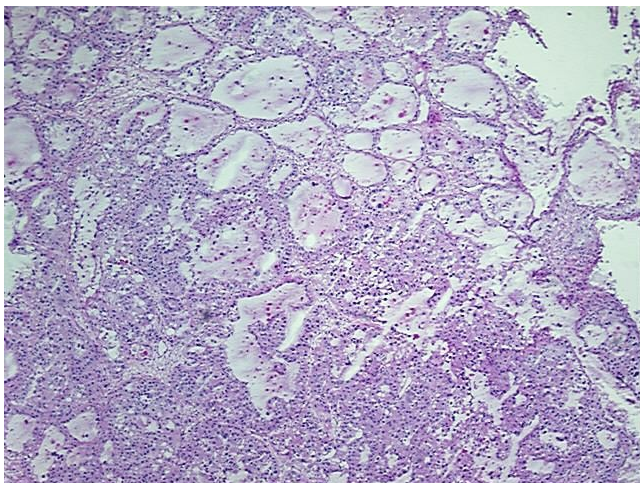
Product Type:	Total RNA
Disease State:	Cancer
Diagnosis Category:	Ovarian Cancer
Tissue:	Ovary
Frozen Sample ID:	FR00007BBC
Case ID:	CU0000001924
Prep:	1
Vial ID:	RN000039AE
Tissue of Origin:	Ovary
Site of Finding:	Ovary
Appearance:	Tumor
Sample Diagnosis (from Pathology Verification):	Adenocarcinoma of ovary, clear cell
Normal:	0%
Lesional:	0%
Tumor:	85%
Tumor Hypo/Acellular Stroma:	10%
Tumor Hypercellular Stroma:	5%
Necrosis:	0%
Pathology Verification notes from H&E review:	no characteristic "peg" cells in clear cell type of ovarian cancer seen
Bioanalyzer Ratio (28S/18S):	1.18



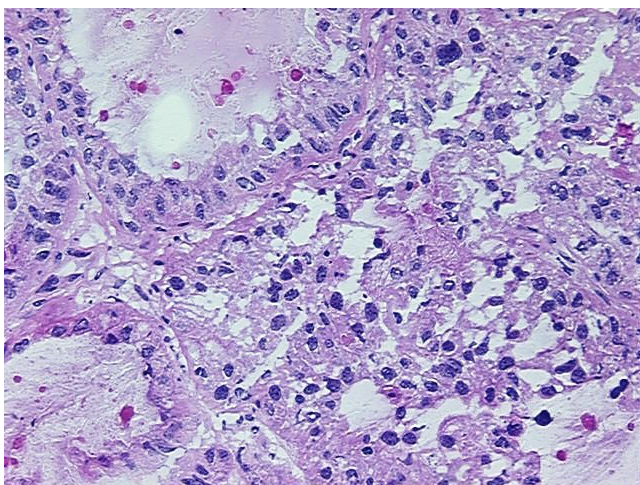
[View online »](#)

CASE Diagnosis (from medical center path report):	Adenocarcinoma of ovary, clear cell
Age:	36
Gender:	Female
Tumor Grade:	FIGO G3: Poorly differentiated
Minimum Stage Grouping:	IA
T (Extent of Primary Tumor):	T1a
N (Lymph node metastasis):	N0
M (Distant metastasis):	MX
Diagnostic Test Results:	Alpha-1-fetoprotein ~ AFP ! by IHC,Negative
Storage:	Store tissue total RNA at -80°C.
Stability:	These products are stable for one year from date of shipping when stored at -80°C without repeated freeze/thaws.

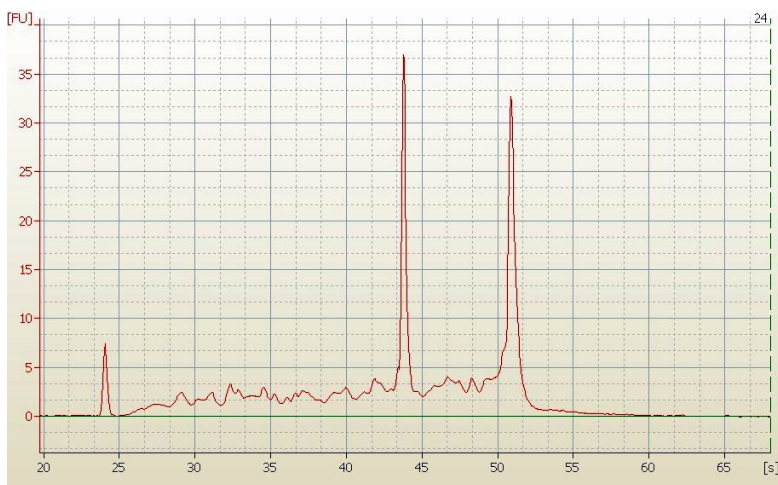
Product images:



4x Image



20x Image



RNA Electropherogram Image



RNA RT-PCR Image