

## Product datasheet for **CR561205**

### Tissue Total RNA, Ovary: bilateral

#### Product data:

Product Type:	Total RNA
Disease State:	Cancer
Diagnosis Category:	Ovarian Cancer
Tissue:	Ovary
Frozen Sample ID:	FR000244C9
Case ID:	CI0000007325
Prep:	1
Vial ID:	RN000033DC
Tissue of Origin:	Ovary: bilateral
Site of Finding:	Ovary: right
Appearance:	Tumor
Sample Diagnosis (from Pathology Verification):	Carcinoma of ovary, papillary serous
Normal:	0%
Lesional:	0%
Tumor:	75%
Tumor Hypo/Acellular Stroma:	10%
Tumor Hypercellular Stroma:	15%
Necrosis:	0%
Pathology Verification notes from H&E review:	Tumor Stroma (Cellular): Desmoplastic reaction
Bioanalyzer Ratio (28S/18S):	1.11



[View online »](#)

**CASE Diagnosis (from medical center path report):** Carcinoma of ovary, papillary serous

**Age:** 50

**Gender:** Female

**Race:** White or Caucasian

**Tumor Grade:** FIGO G3: Poorly differentiated

**Minimum Stage Grouping:** IIIC

**T (Extent of Primary Tumor):** T3

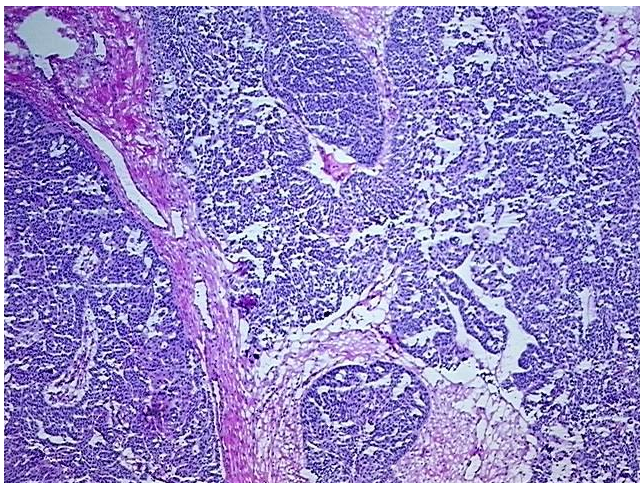
**N (Lymph node metastasis):** N1

**M (Distant metastasis):** MX

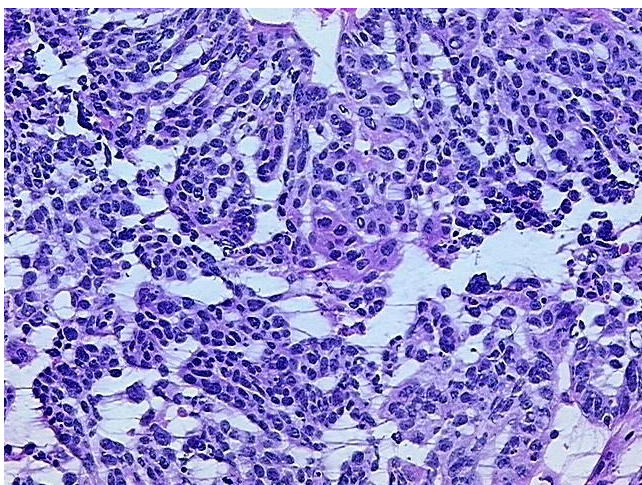
**Storage:** Store tissue total RNA at -80°C.

**Stability:** These products are stable for one year from date of shipping when stored at -80°C without repeated freeze/thaws.

### Product images:



4x Image



20x Image