

## Product datasheet for CR560756

### Tissue Total RNA, Ovary: right

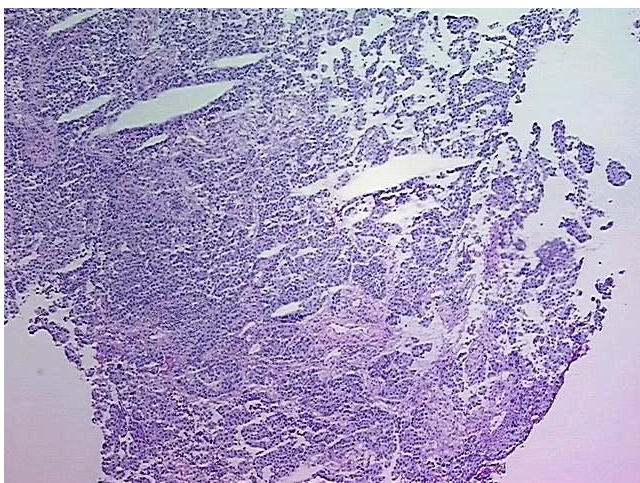
#### Product data:

Product Type:	Total RNA
Disease State:	Cancer
Diagnosis Category:	Ovarian Cancer
Tissue:	Ovary
Frozen Sample ID:	FR5B33AB4D
Case ID:	CI0000006963
Prep:	2
Vial ID:	RN000022A8
Tissue of Origin:	Ovary: right
Site of Finding:	Omentum
Appearance:	Tumor
Sample Diagnosis (from Pathology Verification):	Adenocarcinoma of ovary, papillary serous, metastatic
Normal:	0%
Lesional:	0%
Tumor:	85%
Tumor Hypo/Acellular Stroma:	14%
Tumor Hypercellular Stroma:	0%
Necrosis:	1%
Bioanalyzer Ratio (28S/18S):	1.35
CASE Diagnosis (from medical center path report):	Adenocarcinoma of ovary, papillary serous
Age:	69

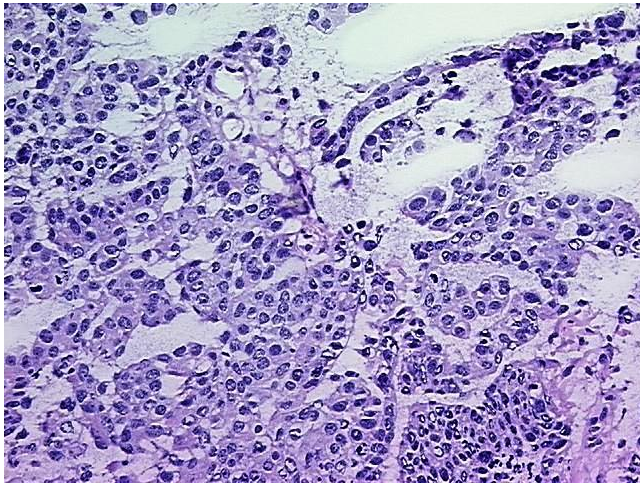


[View online »](#)

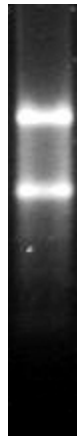
Gender:	Female
Race:	Black or African American
Tumor Grade:	FIGO G2: Moderately differentiated
Minimum Stage Grouping:	III
T (Extent of Primary Tumor):	T3
N (Lymph node metastasis):	NX
M (Distant metastasis):	MX
Storage:	Store tissue total RNA at -80°C.
Stability:	These products are stable for one year from date of shipping when stored at -80°C without repeated freeze/thaws.

**Product images:**

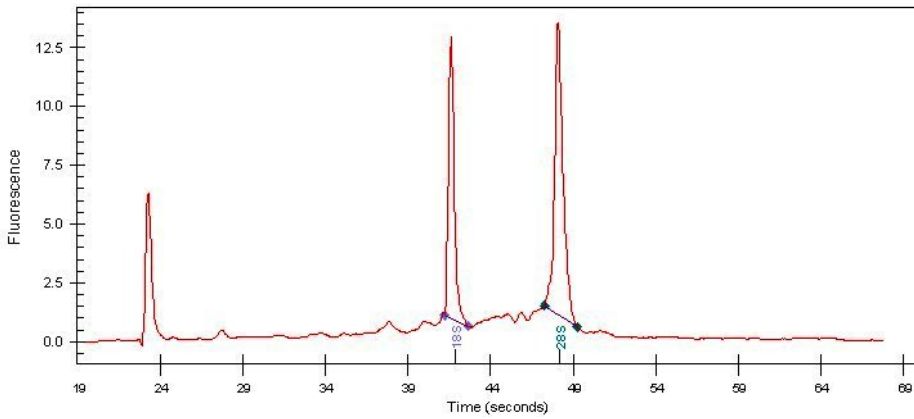
4x Image



20x Image



RNA Gel Image



RNA Electropherogram Image



RNA RT-PCR Image