

Product datasheet for CR560346

Tissue Total RNA, Esophagus

Product data:

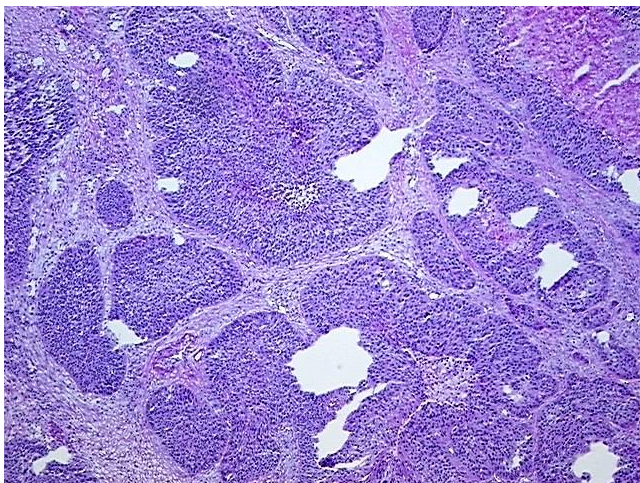
Product Type:	Total RNA
Disease State:	Cancer
Diagnosis Category:	Esophageal/Gastroesophageal Cancer
Tissue:	Esophagus
Frozen Sample ID:	FR0003E731
Case ID:	CI0000016879
Prep:	1
Vial ID:	RN00002FC3
Tissue of Origin:	Esophagus
Site of Finding:	Esophagus
Appearance:	Tumor
Sample Diagnosis (from Pathology Verification):	Carcinoma of esophagus, squamous cell
Normal:	40%
Lesional:	0%
Tumor:	50%
Tumor Hypo/Acellular Stroma:	0%
Tumor Hypercellular Stroma:	9%
Necrosis:	1%
Pathology Verification notes from H&E review:	Inflammation: Mild Lymphoid infiltrate
Bioanalyzer Ratio (28S/18S):	1.45



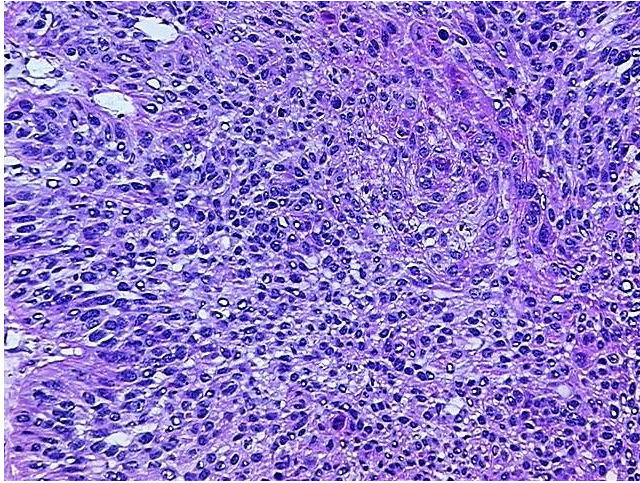
[View online »](#)

CASE Diagnosis (from medical center path report):	Carcinoma of esophagus, squamous cell
Age:	82
Gender:	Female
Race:	Black or African American
Tumor Grade:	AJCC G1: Well differentiated
Minimum Stage Grouping:	III
T (Extent of Primary Tumor):	T3
N (Lymph node metastasis):	N1
M (Distant metastasis):	MX
Storage:	Store tissue total RNA at -80°C.
Stability:	These products are stable for one year from date of shipping when stored at -80°C without repeated freeze/thaws.

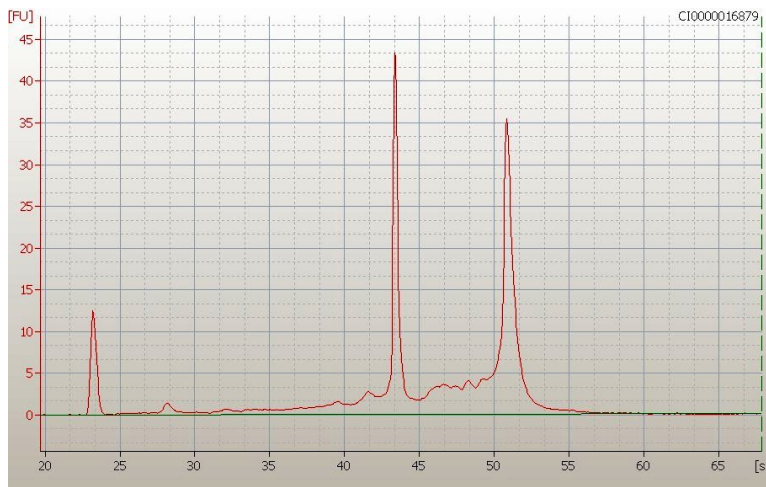
Product images:



4x Image



20x Image



RNA Electropherogram Image



RNA RT-PCR Image