

## Product datasheet for **CF813680**

### SLAMF7 Mouse Monoclonal Antibody [Clone ID: OTI3B6]

#### Product data:

Product Type:	Primary Antibodies
Clone Name:	OTI3B6
Applications:	FC, WB
Recommended Dilution:	WB 1:500-1000, FLOW 1:100
Reactivity:	Human
Host:	Mouse
Isotype:	IgG1
Clonality:	Monoclonal
Immunogen:	Full length human recombinant protein of human SLAMF7 (NP_067004) produced in HEK293T cell.
Formulation:	Lyophilized powder (original buffer 1X PBS, pH 7.3, 8% trehalose)
Reconstitution Method:	For reconstitution, we recommend adding 100uL distilled water to a final antibody concentration of about 1 mg/mL. To use this carrier-free antibody for conjugation experiment, we strongly recommend performing another round of desalting process. (OriGene recommends Zeba Spin Desalting Columns, 7KMWCO from Thermo Scientific)
Purification:	Purified from mouse ascites fluids or tissue culture supernatant by affinity chromatography (protein A/G)
Conjugation:	Unconjugated
Storage:	Shipped at -20°C or with ice packs, Upon delivery store at -20°C. Dilute in PBS(pH7.3) if necessary. Stable for 12 months from date of receipt. Avoid repeated freeze-thaws.
Stability:	Stable for 12 months from date of receipt.
Predicted Protein Size:	37.2 kDa
Gene Name:	SLAM family member 7
Database Link:	<a href="#">NP_067004</a> <a href="#">Entrez Gene 57823 Human</a> <a href="#">Q9NQ25</a>
Background:	Isoform 3 does not mediate any NK cell activation. [UniProtKB/Swiss-Prot Function]

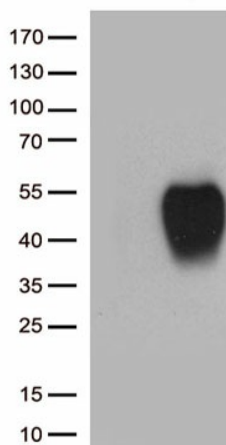


[View online »](#)

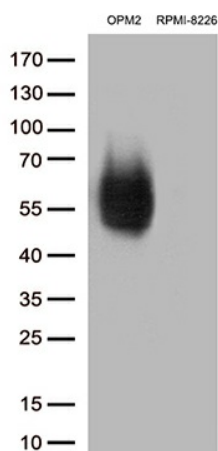
Synonyms: 19A; CD319; CRACC; CS1

Protein Families: Druggable Genome, Transmembrane

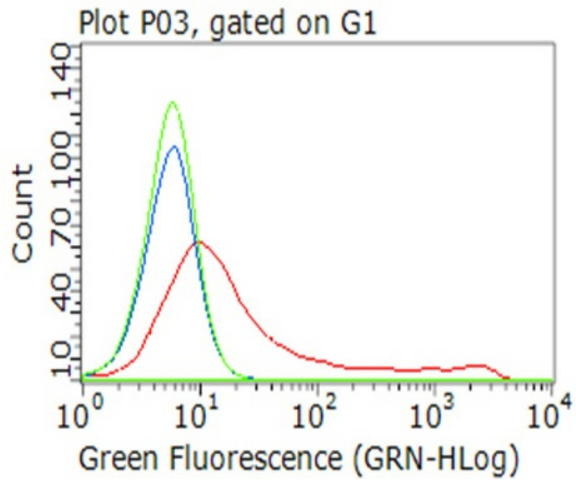
### Product images:



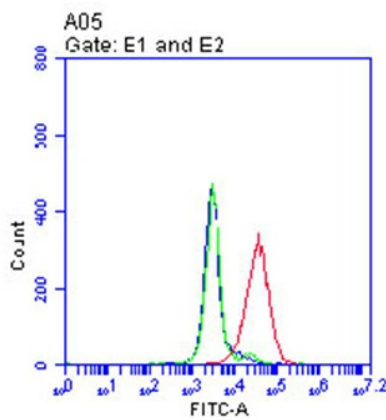
HEK293T cells were transfected with the pCMV6-ENTRY control (Left lane) or pCMV6-ENTRY SLAMF7 ([RC220985], Right lane) cDNA for 48 hrs and lysed. Equivalent amounts of cell lysates (5 ug per lane) were separated by SDS-PAGE and immunoblotted with anti-SLAMF7.(1:1000)



Western blot analysis of extracts (35ug) from 2 cell lines lysates by using anti-SLAMF7 monoclonal antibody. (1:500)



Flow cytometric analysis of living 293T cells transfected with SLAMF7 overexpression plasmid ([RC220985]), Red)/empty vector ([PS100001], Blue) using anti-SLAMF7 antibody ([TA813680]). Cells incubated with a non-specific antibody (Green) were used as isotype control.(1:100)



Flow cytometric analysis of living OPM2 cells, using anti-SLAMF7 antibody([TA813680], Red), compared to an isotype control (green), and a PBS control (blue).(1:100)