

Product datasheet for **CF812520**

MRP2 (ABCC2) Mouse Monoclonal Antibody [Clone ID: OTI5C3]

Product data:

Product Type:	Primary Antibodies
Clone Name:	OTI5C3
Applications:	IHC, WB
Recommended Dilution:	WB 1:500, IHC 1:5000
Reactivity:	Human, Rat
Host:	Mouse
Isotype:	IgG1
Clonality:	Monoclonal
Immunogen:	Human recombinant protein fragment corresponding to amino acids 1256-1545 of human ABCC2 (NP_000383) produced in E.coli.
Formulation:	Lyophilized powder (original buffer 1X PBS, pH 7.3, 8% trehalose)
Reconstitution Method:	For reconstitution, we recommend adding 100uL distilled water to a final antibody concentration of about 1 mg/mL. To use this carrier-free antibody for conjugation experiment, we strongly recommend performing another round of desalting process. (OriGene recommends Zeba Spin Desalting Columns, 7KMWCO from Thermo Scientific)
Purification:	Purified from mouse ascites fluids or tissue culture supernatant by affinity chromatography (protein A/G)
Conjugation:	Unconjugated
Storage:	Store at -20°C as received.
Stability:	Stable for 12 months from date of receipt.
Gene Name:	ATP binding cassette subfamily C member 2
Database Link:	NP_000383 Entrez Gene 25303 Rat Entrez Gene 1244 Human Q92887
Background:	Mediates hepatobiliary excretion of numerous organic anions. May function as a cellular cisplatin transporter. [UniProtKB/Swiss-Prot Function]
Synonyms:	ABC30; CMOAT; cMRP; DJS; MRP2

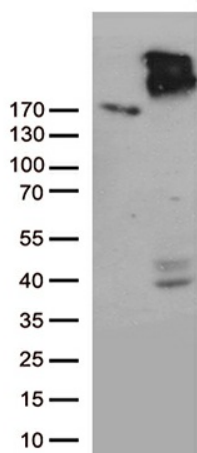


[View online »](#)

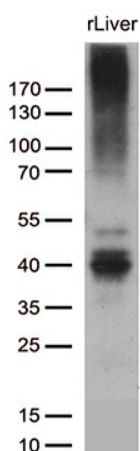
Protein Families: Druggable Genome, Transmembrane

Protein Pathways: ABC transporters

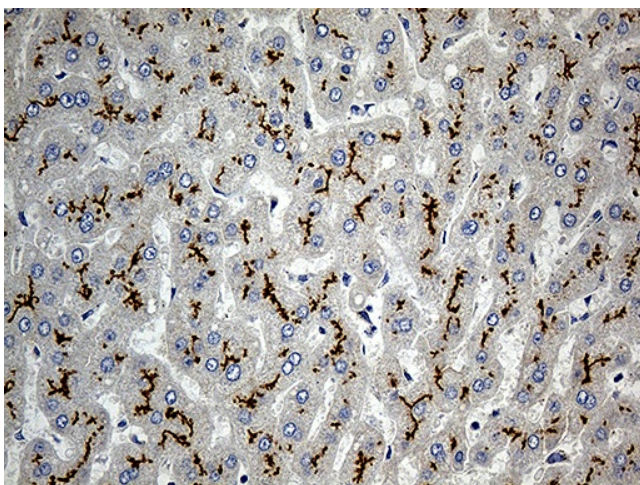
Product images:



HEK293T cells were transfected with the pCMV6-ENTRY control (Cat# [PS100001], Left lane) or pCMV6-ENTRY ABCC2 (Cat# [RC218976], Right lane) cDNA for 48 hrs and lysed. Equivalent amounts of cell lysates (5 ug per lane) were separated by SDS-PAGE and immunoblotted with anti-ABCC2 (Cat# [TA812520])(1:500).



Western blot analysis of extracts (35ug) from rat liver lysates by using anti-ABCC2 monoclonal antibody (1:500).



Immunohistochemical staining of paraffin-embedded Human liver tissue within the normal limits using anti-ABCC2 mouse monoclonal antibody. (Heat-induced epitope retrieval by 1mM EDTA in 10mM Tris buffer (pH8.5) at 120°C for 3min, [TA812520]) (1:5000)