

Product datasheet for **CF811947**

TOMM40 Mouse Monoclonal Antibody [Clone ID: OTI9A3]

Product data:

| | |
|--------------------------------|--|
| Product Type: | Primary Antibodies |
| Clone Name: | OTI9A3 |
| Applications: | IHC, WB |
| Recommended Dilution: | WB 1:500, IHC 1:500 |
| Reactivity: | Human, Mouse, Rat |
| Host: | Mouse |
| Isotype: | IgG2b |
| Clonality: | Monoclonal |
| Immunogen: | Full length human recombinant protein of human TOMM40 (NP_006105) produced in E.coli. |
| Formulation: | Lyophilized powder (original buffer 1X PBS, pH 7.3, 8% trehalose) |
| Reconstitution Method: | For reconstitution, we recommend adding 100uL distilled water to a final antibody concentration of about 1 mg/mL. To use this carrier-free antibody for conjugation experiment, we strongly recommend performing another round of desalting process. (OriGene recommends Zeba Spin Desalting Columns, 7KMWCO from Thermo Scientific) |
| Purification: | Purified from mouse ascites fluids or tissue culture supernatant by affinity chromatography (protein A/G) |
| Conjugation: | Unconjugated |
| Storage: | Store at -20°C as received. |
| Stability: | Stable for 12 months from date of receipt. |
| Predicted Protein Size: | 37.7 kDa |
| Gene Name: | translocase of outer mitochondrial membrane 40 |
| Database Link: | NP_006105 Entrez Gene 53333 MouseEntrez Gene 308416 RatEntrez Gene 10452 Human O96008 |



[View online »](#)

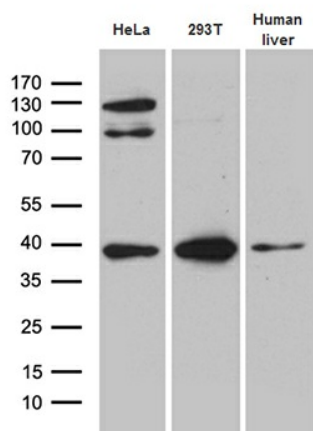
Background: The protein encoded by this gene is localized in the outer membrane of the mitochondria. It is the channel-forming subunit of the translocase of the mitochondrial outer membrane (TOM) complex that is essential for import of protein precursors into mitochondria. Alternatively spliced transcript variants have been found for this gene. [provided by RefSeq, Aug 2015]

Synonyms: C19orf1; D19S1177E; PER-EC1; PEREC1; TOM40

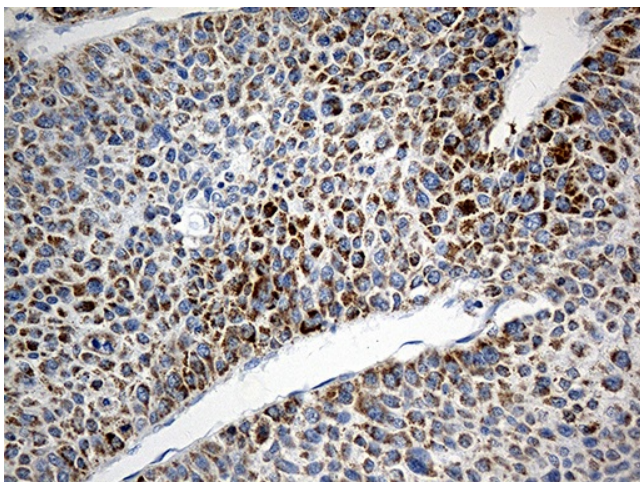
Protein Families: Druggable Genome, Ion Channels: Other

Protein Pathways: Amyotrophic lateral sclerosis (ALS)

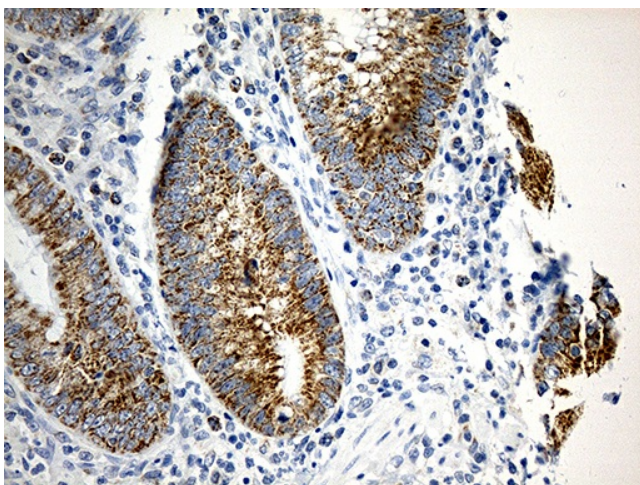
Product images:



Western blot analysis of extracts (35ug) from 2 cell lines and human liver tissue lysate by using anti-TOMM40 monoclonal antibody (1:500).



Immunohistochemical staining of paraffin-embedded Carcinoma of Human liver tissue using anti-TOMM40 mouse monoclonal antibody. (Heat-induced epitope retrieval by 1mM EDTA in 10mM Tris buffer (pH8.5) at 120°C for 3min, [TA811947]) (1:500)



Immunohistochemical staining of paraffin-embedded Human appendix tissue within the normal limits using anti-TOMM40 mouse monoclonal antibody. (Heat-induced epitope retrieval by 1mM EDTA in 10mM Tris buffer (pH8.5) at 120°C for 3min, [TA811947]) (1:500)