

## Product datasheet for **CF811539**

### CD14 Mouse Monoclonal Antibody [Clone ID: OTI6D7]

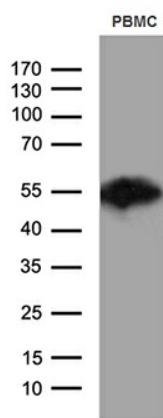
#### Product data:

Product Type:	Primary Antibodies
Clone Name:	OTI6D7
Applications:	FC, IHC, WB
Recommended Dilution:	WB 1:500, FLOW 1:100
Reactivity:	Human
Host:	Mouse
Isotype:	IgG1
Clonality:	Monoclonal
Immunogen:	Human recombinant protein fragment corresponding to amino acids 20-87 of human CD14 (NP_000582) produced in E.coli.
Formulation:	Lyophilized powder (original buffer 1X PBS, pH 7.3, 8% trehalose)
Reconstitution Method:	For reconstitution, we recommend adding 100uL distilled water to a final antibody concentration of about 1 mg/mL. To use this carrier-free antibody for conjugation experiment, we strongly recommend performing another round of desalting process. (OriGene recommends Zeba Spin Desalting Columns, 7KMWCO from Thermo Scientific)
Purification:	Purified from mouse ascites fluids or tissue culture supernatant by affinity chromatography (protein A/G)
Conjugation:	Unconjugated
Storage:	Store at -20°C as received.
Stability:	Stable for 12 months from date of receipt.
Predicted Protein Size:	40.08 kDa
Gene Name:	CD14 molecule
Database Link:	<a href="#">NP_000582</a> <a href="#">Entrez Gene 929 Human</a> <a href="#">P08571</a>

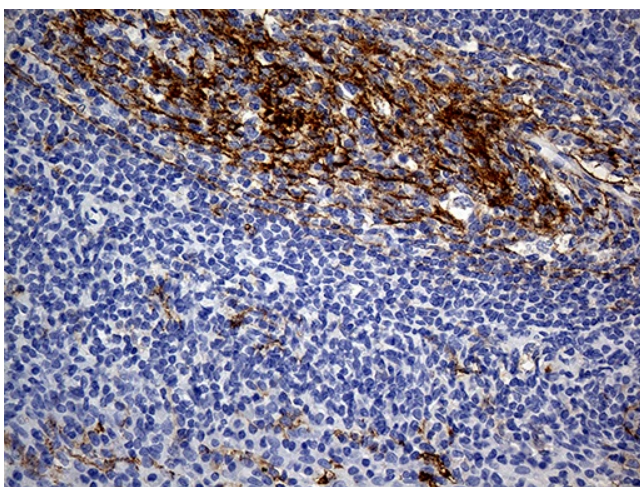
[View online »](#)

<b>Background:</b>	The protein encoded by this gene is a surface antigen that is preferentially expressed on monocytes/macrophages. It cooperates with other proteins to mediate the innate immune response to bacterial lipopolysaccharide. Alternative splicing results in multiple transcript variants encoding the same protein. [provided by RefSeq, Mar 2010]
<b>Synonyms:</b>	CD14 antigen; CD14 molecule; monocyte differentiation antigen CD14
<b>Protein Families:</b>	Adult stem cells, Druggable Genome, Embryonic stem cells, ES Cell Differentiation/IPS, Transmembrane
<b>Protein Pathways:</b>	Hematopoietic cell lineage, MAPK signaling pathway, Pathogenic Escherichia coli infection, Regulation of actin cytoskeleton, Toll-like receptor signaling pathway

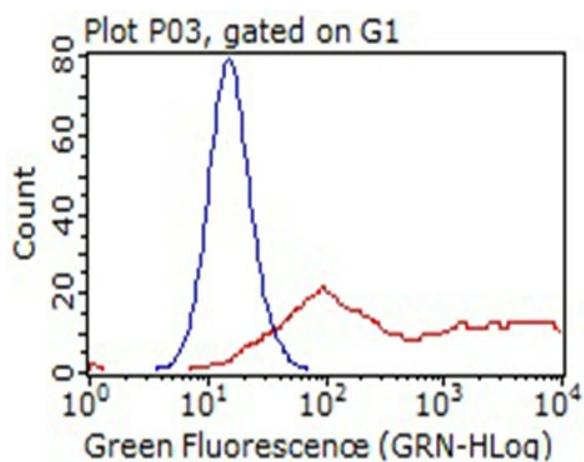
## Product images:



Western blot analysis of extracts (35ug) from PBMC by using anti-CD14 monoclonal antibody (1:500).



Immunohistochemical staining of paraffin-embedded Human tonsil within the normal limits using anti-CD14 mouse monoclonal antibody. (Heat-induced epitope retrieval by 1mM EDTA in 10mM Tris buffer (pH8.5) at 120°C for 3min, [TA811539]) (1:150)



HEK293T cells transfected with either [RC203819] overexpress plasmid (Red) or empty vector control plasmid (Blue) were immunostained by anti-CD14 antibody ([TA811539]), and then analyzed by flow cytometry (1:100).