

Product datasheet for **CF810602**

NDUFA4L2 Mouse Monoclonal Antibody [Clone ID: OTI5C10]

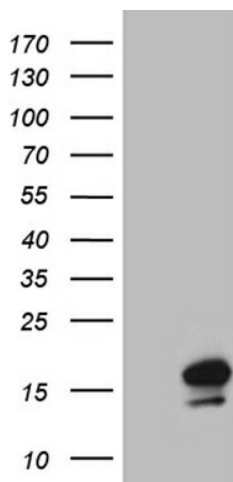
Product data:

Product Type:	Primary Antibodies
Clone Name:	OTI5C10
Applications:	IHC, WB
Recommended Dilution:	WB 1:500~2000, IHC 1:500
Reactivity:	Human, Mouse, Rat
Host:	Mouse
Isotype:	IgG2a
Clonality:	Monoclonal
Immunogen:	Full length human recombinant protein of human NDUFA4L2 (NP_064527) produced in E.coli.
Formulation:	Lyophilized powder (original buffer 1X PBS, pH 7.3, 8% trehalose)
Reconstitution Method:	For reconstitution, we recommend adding 100uL distilled water to a final antibody concentration of about 1 mg/mL. To use this carrier-free antibody for conjugation experiment, we strongly recommend performing another round of desalting process. (OriGene recommends Zeba Spin Desalting Columns, 7KMWCO from Thermo Scientific)
Purification:	Purified from mouse ascites fluids or tissue culture supernatant by affinity chromatography (protein A/G)
Conjugation:	Unconjugated
Storage:	Store at -20°C as received.
Stability:	Stable for 12 months from date of receipt.
Gene Name:	NDUFA4 mitochondrial complex associated like 2
Database Link:	NP_064527 Entrez Gene 407790 Mouse Entrez Gene 56901 Human Q9NRX3
Synonyms:	NUOMS
Protein Families:	Transmembrane
Protein Pathways:	Alzheimer's disease, Huntington's disease, Metabolic pathways, Oxidative phosphorylation, Parkinson's disease

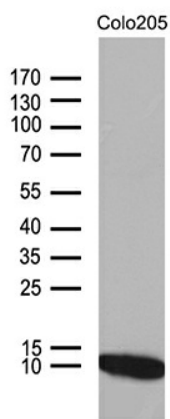


[View online »](#)

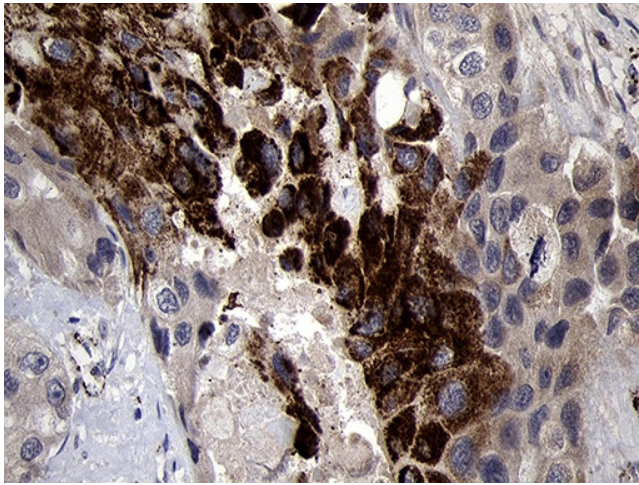
Product images:



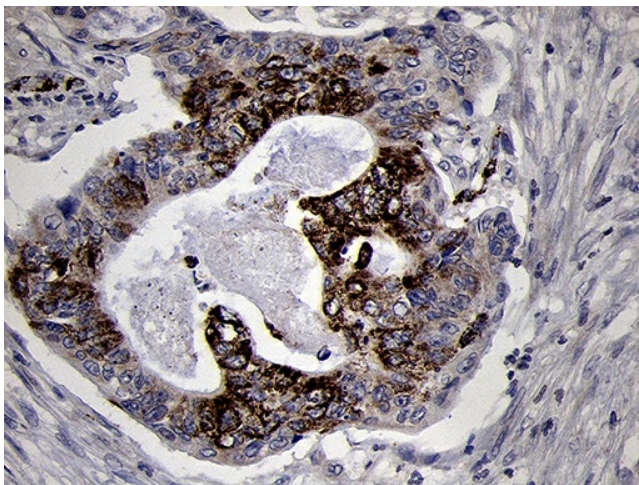
HEK293T cells were transfected with the pCMV6-ENTRY control (Cat# [PS100001], Left lane) or pCMV6-ENTRY NDUFA4L2 (Cat# [RC204098], Right lane) cDNA for 48 hrs and lysed. Equivalent amounts of cell lysates (5 ug per lane) were separated by SDS-PAGE and immunoblotted with anti-NDUFA4L2 (1:2000) (Cat# [TA810602]). Positive lysates [LY412631] (100ug) and [LC412631] (20ug) can be purchased separately from OriGene.



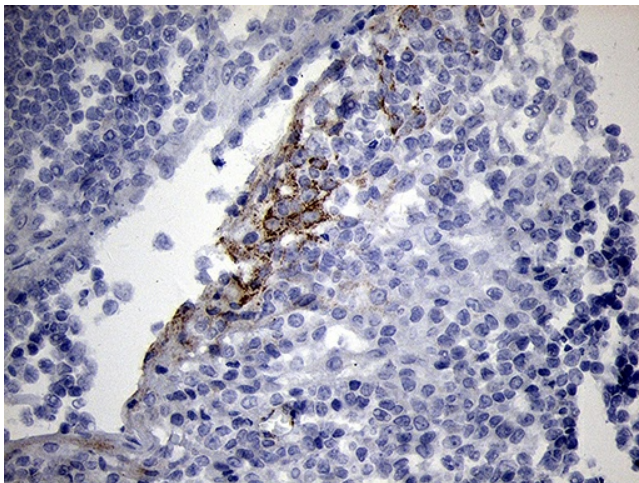
Western blot analysis of extracts (35ug) from COLO205 cell line by using anti-NDUFA4L2 monoclonal antibody (1:500).



Immunohistochemical staining of paraffin-embedded Adenocarcinoma of Human breast tissue using anti-NDUFA4L2 mouse monoclonal antibody. (Heat-induced epitope retrieval by 1mM EDTA in 10mM Tris buffer (pH8.5) at 120°C for 3min, [TA810602]) (1:500)



Immunohistochemical staining of paraffin-embedded Adenocarcinoma of Human colon tissue using anti-NDUFA4L2 mouse monoclonal antibody. (Heat-induced epitope retrieval by 1mM EDTA in 10mM Tris buffer (pH8.5) at 120°C for 3min, [TA810602]) (1:500)



Immunohistochemical staining of paraffin-embedded Human tonsil within the normal limits using anti-NDUFA4L2 mouse monoclonal antibody. (Heat-induced epitope retrieval by 1mM EDTA in 10mM Tris buffer (pH8.5) at 120°C for 3min, [TA810602]) (1:500)