

Product datasheet for **CF810598**

CPT1B Mouse Monoclonal Antibody [Clone ID: OTI6B8]

Product data:

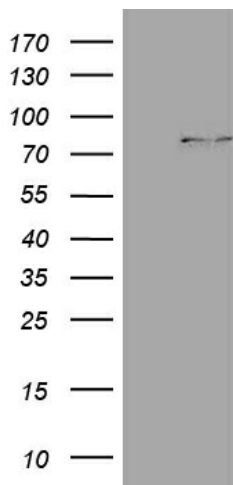
Product Type:	Primary Antibodies
Clone Name:	OTI6B8
Applications:	IHC, WB
Recommended Dilution:	WB 1:2000, IHC 1:500
Reactivity:	Human, Mouse, Rat
Host:	Mouse
Isotype:	IgG2b
Clonality:	Monoclonal
Immunogen:	Human recombinant protein fragment corresponding to amino acids 187-440 of human CPT1B (NP_004368) produced in E.coli.
Formulation:	Lyophilized powder (original buffer 1X PBS, pH 7.3, 8% trehalose)
Reconstitution Method:	For reconstitution, we recommend adding 100uL distilled water to a final antibody concentration of about 1 mg/mL. To use this carrier-free antibody for conjugation experiment, we strongly recommend performing another round of desalting process. (OriGene recommends Zeba Spin Desalting Columns, 7KMWCO from Thermo Scientific)
Purification:	Purified from mouse ascites fluids or tissue culture supernatant by affinity chromatography (protein A/G)
Conjugation:	Unconjugated
Storage:	Store at -20°C as received.
Stability:	Stable for 12 months from date of receipt.
Predicted Protein Size:	87.6 kDa
Gene Name:	carnitine palmitoyltransferase 1B
Database Link:	NP_004368 Entrez Gene 12895 Mouse Entrez Gene 25756 Rat Entrez Gene 1375 Human Q92523
Synonyms:	CPT1-M; CPT1M; CPTI; CPTI-M; M-CPT1; MCCPT1; MCPT1
Protein Families:	Druggable Genome, Transmembrane



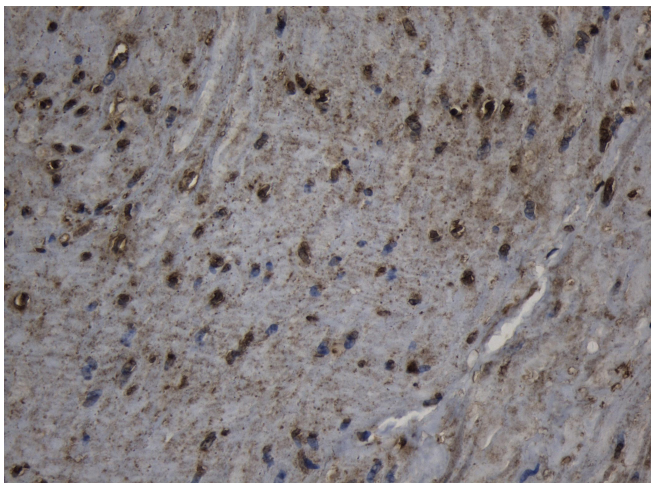
[View online »](#)

Protein Pathways: Adipocytokine signaling pathway, Fatty acid metabolism, PPAR signaling pathway

Product images:



HEK293T cells were transfected with the pCMV6-ENTRY control (Left lane) or pCMV6-ENTRY CPT1B ([RC217297], Right lane) cDNA for 48 hrs and lysed. Equivalent amounts of cell lysates (5 ug per lane) were separated by SDS-PAGE and immunoblotted with anti-CPT1B (1:2000). Positive lysates [LY418031] (100ug) and [LC418031] (20ug) can be purchased separately from OriGene.



Immunohistochemical staining of paraffin-embedded Human bladder tissue within the normal limits using anti-CPT1B mouse monoclonal antibody. (Heat-induced epitope retrieval by 1mM EDTA in 10mM Tris buffer (pH8.5) at 120°C for 3min, [TA810598]) (1:500)