

Product datasheet for **CF810279**

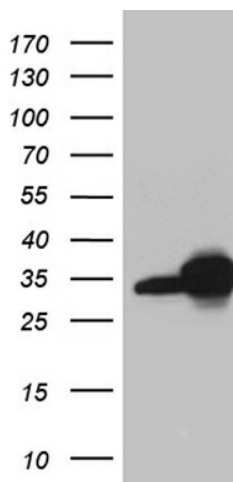
DHRS4L2 Mouse Monoclonal Antibody [Clone ID: OTI8H7]

Product data:

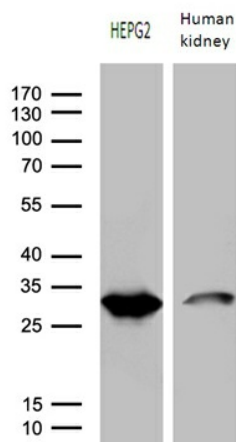
Product Type:	Primary Antibodies
Clone Name:	OTI8H7
Applications:	IHC, WB
Recommended Dilution:	WB 1:500~2000, IHC 1:150
Reactivity:	Human
Host:	Mouse
Isotype:	IgG2b
Clonality:	Monoclonal
Immunogen:	Full length human recombinant protein of human DHRS4L2 (NP_932349) produced in E.coli.
Formulation:	Lyophilized powder (original buffer 1X PBS, pH 7.3, 8% trehalose)
Reconstitution Method:	For reconstitution, we recommend adding 100uL distilled water to a final antibody concentration of about 1 mg/mL. To use this carrier-free antibody for conjugation experiment, we strongly recommend performing another round of desalting process. (OriGene recommends Zeba Spin Desalting Columns, 7KMWCO from Thermo Scientific)
Purification:	Purified from mouse ascites fluids or tissue culture supernatant by affinity chromatography (protein A/G)
Conjugation:	Unconjugated
Storage:	Store at -20°C as received.
Stability:	Stable for 12 months from date of receipt.
Gene Name:	dehydrogenase/reductase 4 like 2
Database Link:	NP_932349 Entrez Gene 317749 Human Q6PKH6
Synonyms:	SDR25C3
Protein Families:	Druggable Genome
Protein Pathways:	Metabolic pathways, Retinol metabolism



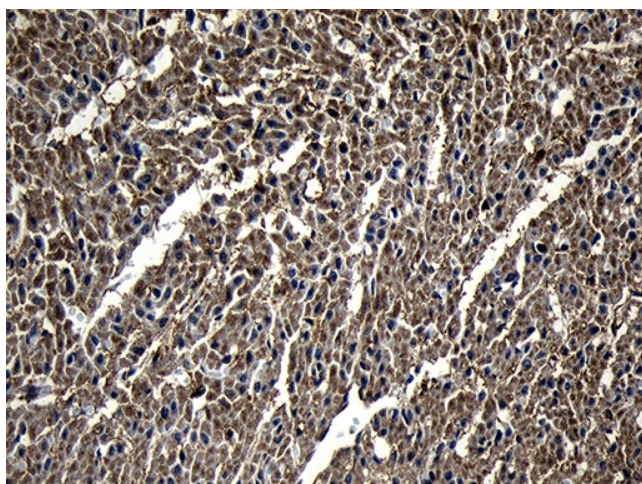
[View online »](#)

Product images:


HEK293T cells were transfected with the pCMV6-ENTRY control (Left lane) or pCMV6-ENTRY DHRS4L2 ([RC215019], Right lane) cDNA for 48 hrs and lysed. Equivalent amounts of cell lysates (5 ug per lane) were separated by SDS-PAGE and immunoblotted with anti-DHRS4L2 (1:2000).



Western blot analysis of extracts (35ug) from HEPG2 cell line and human kidney tissue lysate by using anti-DHRS4L2 monoclonal antibody (1:500).



Immunohistochemical staining of paraffin-embedded Human adult heart tissue within the normal limits using anti-DHRS4L2 mouse monoclonal antibody. (Heat-induced epitope retrieval by 1mM EDTA in 10mM Tris buffer (pH8.5) at 120°C for 3min, [TA810279]) (1:150)

