

## Product datasheet for **CF810066**

### ABCD2 Mouse Monoclonal Antibody [Clone ID: OTI3B7]

#### Product data:

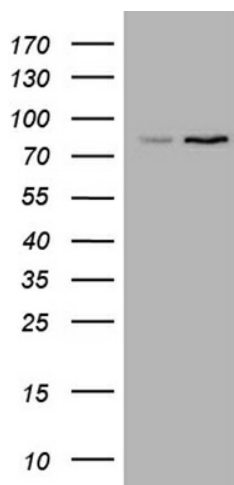
Product Type:	Primary Antibodies
Clone Name:	OTI3B7
Applications:	WB
Recommended Dilution:	WB 1:500
Reactivity:	Human, Mouse, Rat
Host:	Mouse
Isotype:	IgG1
Clonality:	Monoclonal
Immunogen:	Human recombinant protein fragment corresponding to amino acids 418-506 of human ABCD2 (NP_005155) produced in E.coli.
Formulation:	Lyophilized powder (original buffer 1X PBS, pH 7.3, 8% trehalose)
Reconstitution Method:	For reconstitution, we recommend adding 100uL distilled water to a final antibody concentration of about 1 mg/mL. To use this carrier-free antibody for conjugation experiment, we strongly recommend performing another round of desalting process. (OriGene recommends Zeba Spin Desalting Columns, 7KMWCO from Thermo Scientific)
Purification:	Purified from mouse ascites fluids or tissue culture supernatant by affinity chromatography (protein A/G)
Conjugation:	Unconjugated
Storage:	Store at -20°C as received.
Stability:	Stable for 12 months from date of receipt.
Predicted Protein Size:	83.1 kDa
Gene Name:	ATP binding cassette subfamily D member 2
Database Link:	<a href="#">NP_005155</a> <a href="#">Entrez Gene 26874 Mouse</a> <a href="#">Entrez Gene 84356 Rat</a> <a href="#">Entrez Gene 225 Human</a> <a href="#">Q9UBJ2</a>
Synonyms:	ABC39; ALDL1; ALDR; ALDRP; hALDR
Protein Families:	Druggable Genome



[View online »](#)

Protein Pathways: ABC transporters

### Product images:



HEK293T cells were transfected with the pCMV6-ENTRY control (Cat# [PS100001], Left lane) or pCMV6-ENTRY ABCD2 (Cat# [RC211199], Right lane) cDNA for 48 hrs and lysed. Equivalent amounts of cell lysates (5 ug per lane) were separated by SDS-PAGE and immunoblotted with anti-ABCD2 (Cat# [TA810066])(1:500). Positive lysates [LY417474] (100ug) and [LC417474] (20ug) can be purchased separately from OriGene.