

Product datasheet for **CF809844**

Semaphorin 4D (SEMA4D) Mouse Monoclonal Antibody [Clone ID: OTI6G1]

Product data:

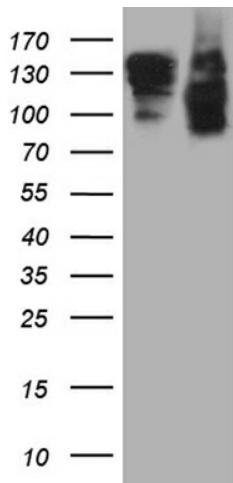
Product Type:	Primary Antibodies
Clone Name:	OTI6G1
Applications:	IHC, WB
Recommended Dilution:	WB 1:500~2000, IHC 1:500
Reactivity:	Human, Mouse
Host:	Mouse
Isotype:	IgG2b
Clonality:	Monoclonal
Immunogen:	Full length human recombinant protein of human SEMA4D (NP_006369) produced in HEK293T cell.
Formulation:	Lyophilized powder (original buffer 1X PBS, pH 7.3, 8% trehalose)
Reconstitution Method:	For reconstitution, we recommend adding 100uL distilled water to a final antibody concentration of about 1 mg/mL. To use this carrier-free antibody for conjugation experiment, we strongly recommend performing another round of desalting process. (OriGene recommends Zeba Spin Desalting Columns, 7KMWCO from Thermo Scientific)
Purification:	Purified from mouse ascites fluids or tissue culture supernatant by affinity chromatography (protein A/G)
Conjugation:	Unconjugated
Storage:	Store at -20°C as received.
Stability:	Stable for 12 months from date of receipt.
Predicted Protein Size:	96 kDa
Gene Name:	semaphorin 4D
Database Link:	NP_006369 Entrez Gene 10507 Human Q92854
Synonyms:	C9orf164; CD100; coll-4; M-sema-G; SEMAJ
Protein Families:	Druggable Genome, Transmembrane



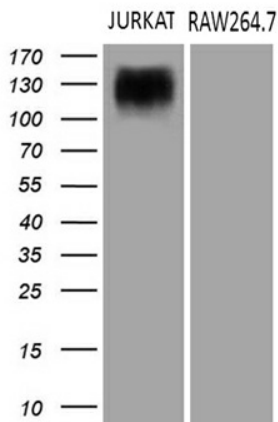
[View online »](#)

Protein Pathways: Axon guidance

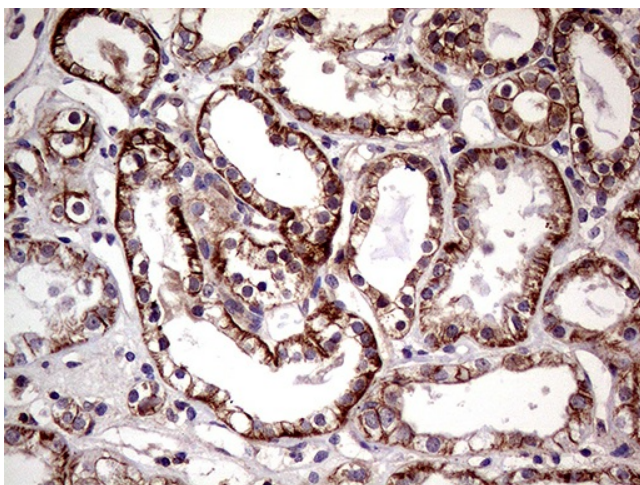
Product images:



HEK293T cells were transfected with the pCMV6-ENTRY control (Left lane) or pCMV6-ENTRY SEMA4D ([RC208521], Right lane) cDNA for 48 hrs and lysed. Equivalent amounts of cell lysates (5 ug per lane) were separated by SDS-PAGE and immunoblotted with anti-SEMA4D (1:2000). Positive lysates [LY416686] (100ug) and [LC416686] (20ug) can be purchased separately from OriGene.



Western blot analysis of extracts (35ug) from 2 different cell lines by using anti-SEMA4D monoclonal antibody (1:500).



Immunohistochemical staining of paraffin-embedded Human Kidney tissue within the normal limits using anti-SEMA4D mouse monoclonal antibody. (Heat-induced epitope retrieval by 1mM EDTA in 10mM Tris buffer (pH8.5) at 120°C for 3min, [TA809844]) (1:500)