

Product datasheet for **CF809081**

alpha 1 Fetoprotein (AFP) Mouse Monoclonal Antibody [Clone ID: OTI2F11]

Product data:

Product Type:	Primary Antibodies
Clone Name:	OTI2F11
Applications:	IF, IHC, WB
Recommended Dilution:	WB 1:2000, IHC 1:150, IF 1:100
Reactivity:	Human
Host:	Mouse
Isotype:	IgG2b
Clonality:	Monoclonal
Immunogen:	Human recombinant protein fragment corresponding to amino acids 19-397 of human AFP (NP_001125) produced in E.coli.
Formulation:	Lyophilized powder (original buffer 1X PBS, pH 7.3, 8% trehalose)
Reconstitution Method:	For reconstitution, we recommend adding 100uL distilled water to a final antibody concentration of about 1 mg/mL. To use this carrier-free antibody for conjugation experiment, we strongly recommend performing another round of desalting process. (OriGene recommends Zeba Spin Desalting Columns, 7KMWCO from Thermo Scientific)
Purification:	Purified from mouse ascites fluids or tissue culture supernatant by affinity chromatography (protein A/G)
Conjugation:	Unconjugated
Storage:	Store at -20°C as received.
Stability:	Stable for 12 months from date of receipt.
Predicted Protein Size:	66.3 kDa
Gene Name:	alpha fetoprotein
Database Link:	NP_001125 Entrez Gene 174 Human P02771



[View online »](#)

Background:

This gene encodes alpha-fetoprotein, a major plasma protein produced by the yolk sac and the liver during fetal life. Alpha-fetoprotein expression in adults is often associated with hepatoma or teratoma. However, hereditary persistence of alpha-fetoprotein may also be found in individuals with no obvious pathology. The protein is thought to be the fetal counterpart of serum albumin, and the alpha-fetoprotein and albumin genes are present in tandem in the same transcriptional orientation on chromosome 4. Alpha-fetoprotein is found in monomeric as well as dimeric and trimeric forms, and binds copper, nickel, fatty acids and bilirubin. The level of alpha-fetoprotein in amniotic fluid is used to measure renal loss of protein to screen for spina bifida and anencephaly. [provided by RefSeq, Jul 2008]

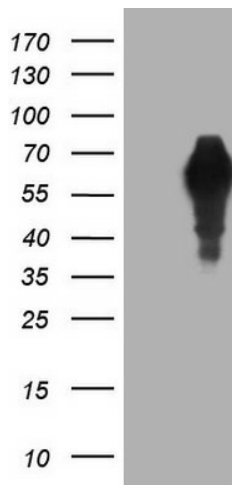
Synonyms:

AFPD; FETA; HPAFP

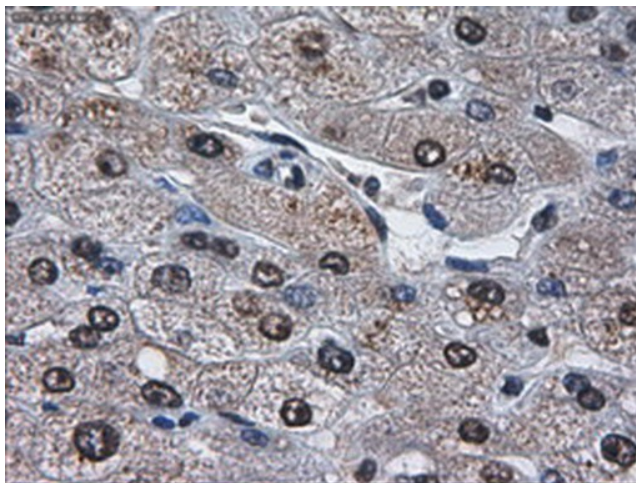
Protein Families:

Druggable Genome, Secreted Protein

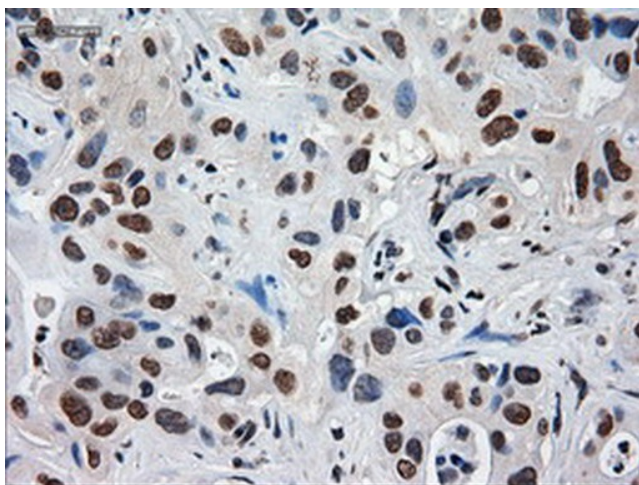
Product images:



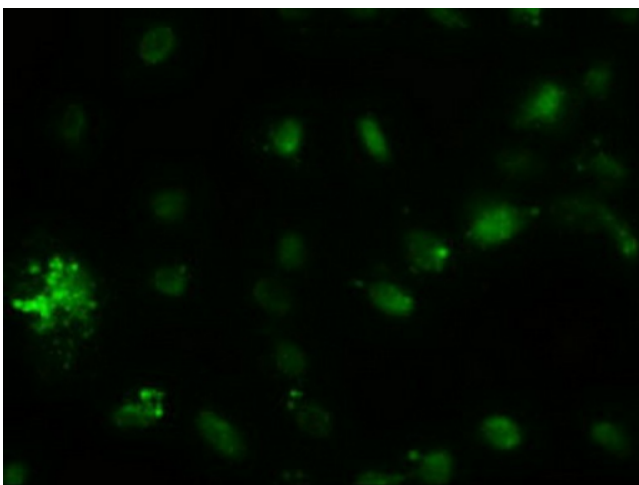
HEK293T cells were transfected with the pCMV6-ENTRY control (Left lane) or pCMV6-ENTRY AFP ([RC206622], Right lane) cDNA for 48 hrs and lysed. Equivalent amounts of cell lysates (5 ug per lane) were separated by SDS-PAGE and immunoblotted with anti-AFP (1:2000). Positive lysates [LY400455] (100ug) and [LC400455] (20ug) can be purchased separately from OriGene.



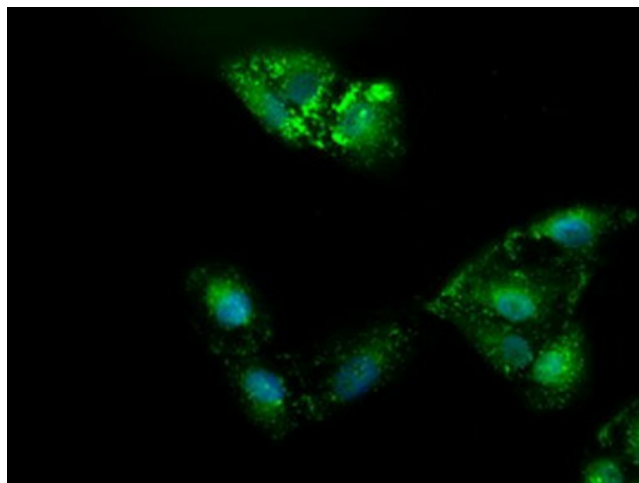
Immunohistochemical staining of paraffin-embedded Human liver tissue within the normal limits using anti-AFP mouse monoclonal antibody. (Heat-induced epitope retrieval by 1mM EDTA in 10mM Tris buffer (pH8.5) at 120°C for 3min, [TA809081]) (1:150)



Immunohistochemical staining of paraffin-embedded Carcinoma of Human liver tissue using anti-AFP mouse monoclonal antibody. (Heat-induced epitope retrieval by 1mM EDTA in 10mM Tris buffer (pH8.5) at 120°C for 3min, [TA809081]) (1:150)



Anti-AFP mouse monoclonal antibody ([TA809081]) immunofluorescent staining of COS7 cells transiently transfected by pCMV6-ENTRY AFP ([RC206622]) (1:100).



Immunofluorescent staining of A549 cells using anti-AFP mouse monoclonal antibody ([TA809081]) (1:100).