

Product datasheet for **CF808721**

CD117 Mouse Monoclonal Antibody [Clone ID: OT11B6]

Product data:

Product Type:	Primary Antibodies
Clone Name:	OT11B6
Applications:	IHC, WB
Recommended Dilution:	WB 1:2000, IHC 1:150
Reactivity:	Human
Host:	Mouse
Isotype:	IgG2b
Clonality:	Monoclonal
Immunogen:	Human recombinant protein fragment corresponding to amino acids 27-308 of human KIT(NP_000213) produced in E.coli.
Formulation:	Lyophilized powder (original buffer 1X PBS, pH 7.3, 8% trehalose)
Reconstitution Method:	For reconstitution, we recommend adding 100uL distilled water to a final antibody concentration of about 1 mg/mL. To use this carrier-free antibody for conjugation experiment, we strongly recommend performing another round of desalting process. (OriGene recommends Zeba Spin Desalting Columns, 7KMWCO from Thermo Scientific)
Purification:	Purified from mouse ascites fluids or tissue culture supernatant by affinity chromatography (protein A/G)
Conjugation:	Unconjugated
Storage:	Store at -20°C as received.
Stability:	Stable for 12 months from date of receipt.
Predicted Protein Size:	109.7 kDa
Gene Name:	KIT proto-oncogene, receptor tyrosine kinase
Database Link:	NP_000213 Entrez Gene 3815 Human P10721



[View online »](#)

Background:

This gene encodes the human homolog of the proto-oncogene c-kit. C-kit was first identified as the cellular homolog of the feline sarcoma viral oncogene v-kit. This protein is a type 3 transmembrane receptor for MGF (mast cell growth factor, also known as stem cell factor). Mutations in this gene are associated with gastrointestinal stromal tumors, mast cell disease, acute myelogenous leukemia, and piebaldism. Multiple transcript variants encoding different isoforms have been found for this gene. [provided by RefSeq, Jul 2008]

Synonyms:

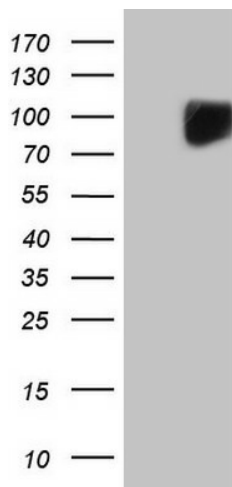
C-Kit; CD117; PBT; SCFR

Protein Families:

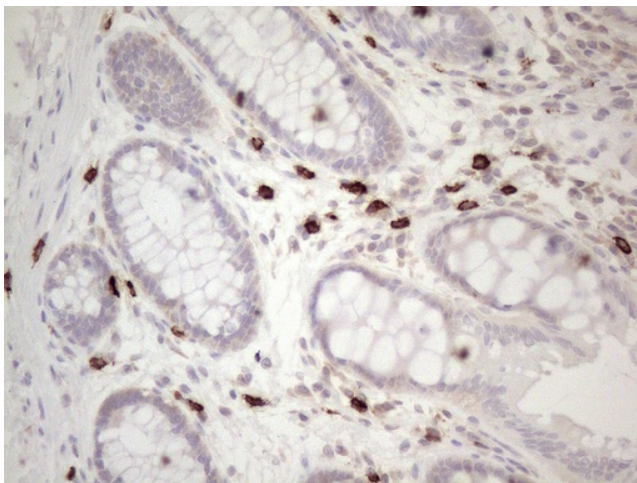
Adult stem cells, Druggable Genome, Embryonic stem cells, ES Cell Differentiation/IPS, Protein Kinase, Stem cell - Pluripotency, Transmembrane

Protein Pathways:

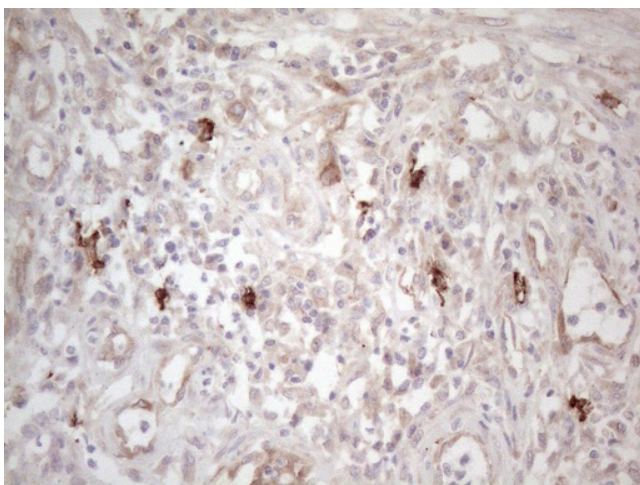
Acute myeloid leukemia, Cytokine-cytokine receptor interaction, Endocytosis, Hematopoietic cell lineage, Melanogenesis, Pathways in cancer

Product images:


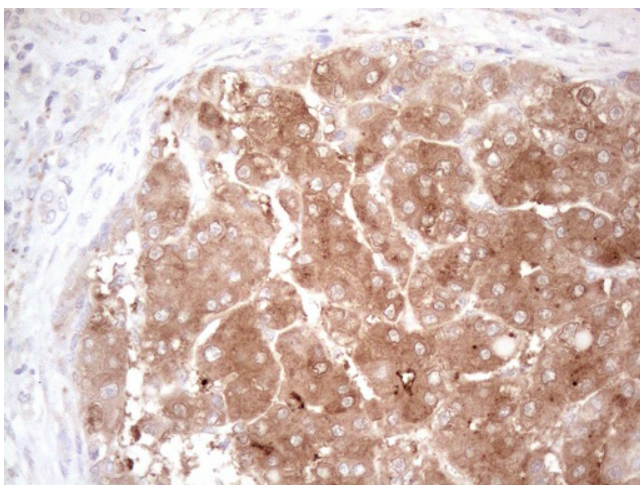
HEK293T cells were transfected with the pCMV6-ENTRY control (Left lane) or pCMV6-ENTRY KIT ([RC209839], Right lane) cDNA for 48 hrs and lysed. Equivalent amounts of cell lysates (5 ug per lane) were separated by SDS-PAGE and immunoblotted with anti-KIT (1:2000). Positive lysates [LY424857] (100ug) and [LC424857] (20ug) can be purchased separately from OriGene.



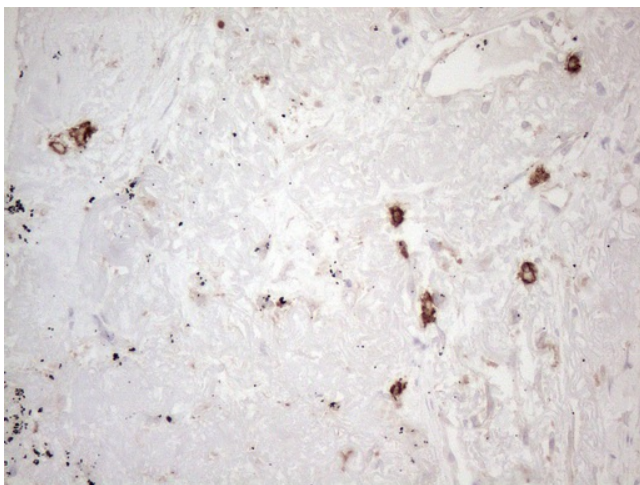
Immunohistochemical staining of paraffin-embedded Human colon tissue within the normal limits using anti-KIT mouse monoclonal antibody. (Heat-induced epitope retrieval by 1mM EDTA in 10mM Tris buffer (pH8.5) at 120°C for 3min, [TA808721]) (1:150)



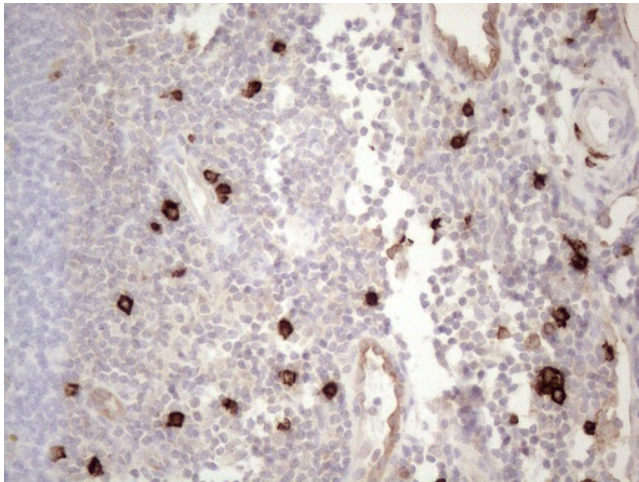
Immunohistochemical staining of paraffin-embedded Adenocarcinoma of Human colon tissue using anti-KIT mouse monoclonal antibody. (Heat-induced epitope retrieval by 1mM EDTA in 10mM Tris buffer (pH8.5) at 120°C for 3min, [TA808721]) (1:150)



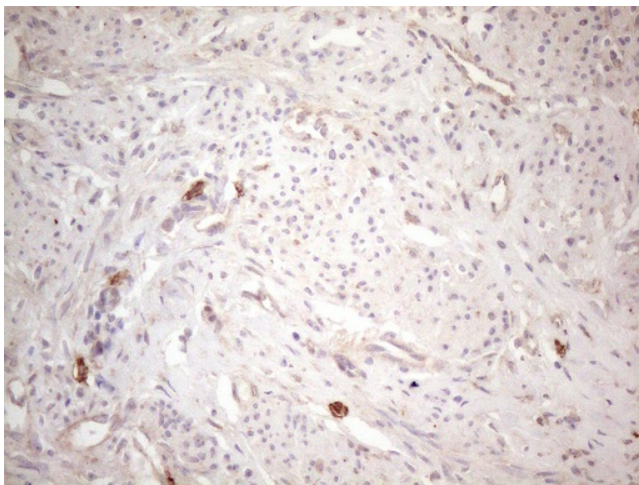
Immunohistochemical staining of paraffin-embedded Carcinoma of Human liver tissue using anti-KIT mouse monoclonal antibody. (Heat-induced epitope retrieval by 1mM EDTA in 10mM Tris buffer (pH8.5) at 120°C for 3min, [TA808721]) (1:150)



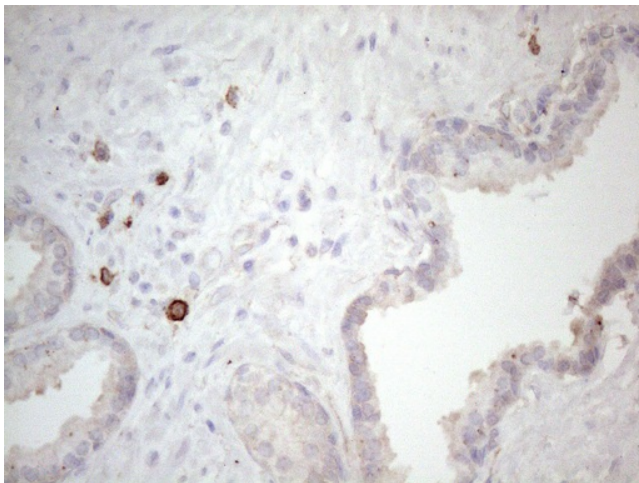
Immunohistochemical staining of paraffin-embedded Carcinoma of Human lung tissue using anti-KIT mouse monoclonal antibody. (Heat-induced epitope retrieval by 1mM EDTA in 10mM Tris buffer (pH8.5) at 120°C for 3min, [TA808721]) (1:150)



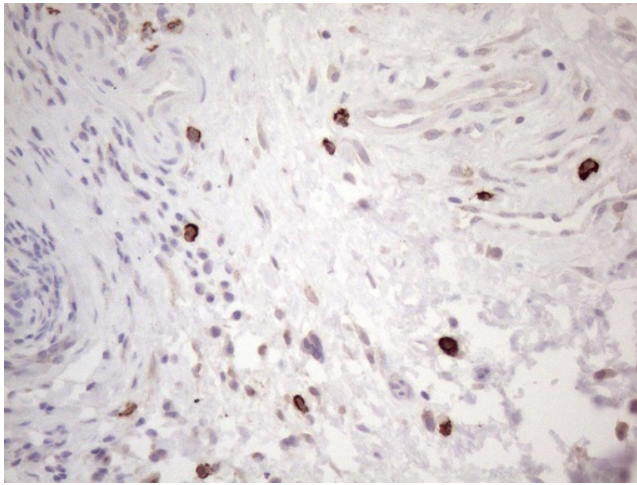
Immunohistochemical staining of paraffin-embedded Carcinoma of Human thyroid tissue using anti-KIT mouse monoclonal antibody. (Heat-induced epitope retrieval by 1mM EDTA in 10mM Tris buffer (pH8.5) at 120°C for 3min, [TA808721]) (1:150)



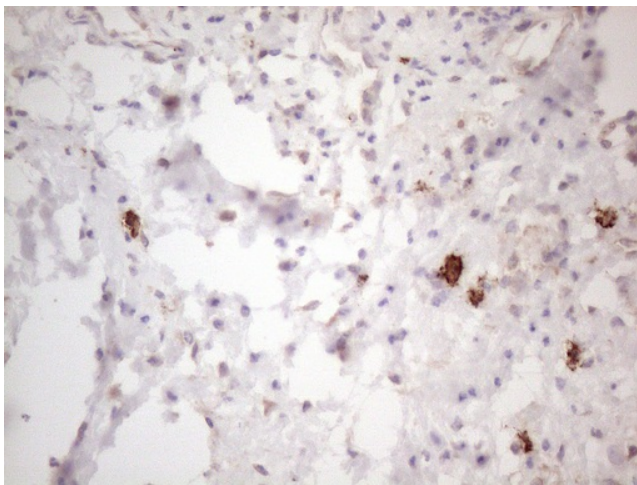
Immunohistochemical staining of paraffin-embedded Human endometrium tissue within the normal limits using anti-KIT mouse monoclonal antibody. (Heat-induced epitope retrieval by 1mM EDTA in 10mM Tris buffer (pH8.5) at 120°C for 3min, [TA808721]) (1:150)



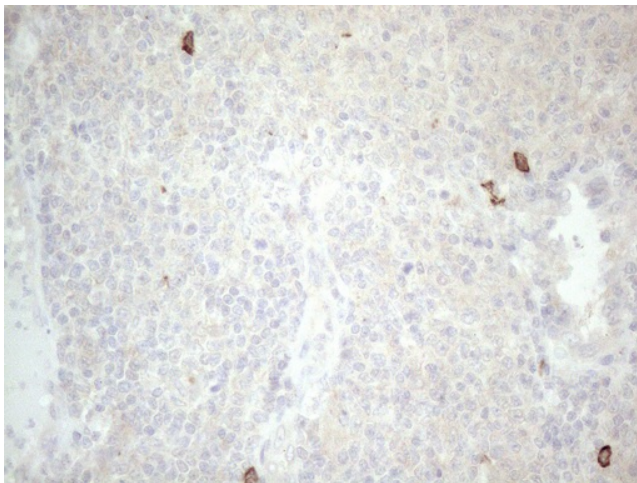
Immunohistochemical staining of paraffin-embedded Carcinoma of Human prostate tissue using anti-KIT mouse monoclonal antibody. (Heat-induced epitope retrieval by 1mM EDTA in 10mM Tris buffer (pH8.5) at 120°C for 3min, [TA808721]) (1:150)



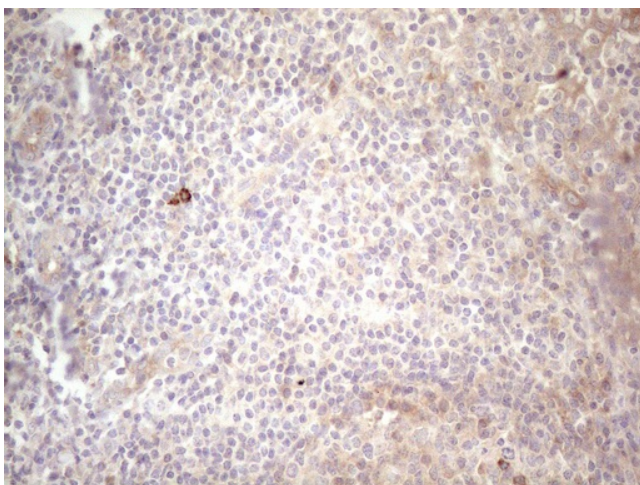
Immunohistochemical staining of paraffin-embedded Human bladder tissue within the normal limits using anti-KIT mouse monoclonal antibody. (Heat-induced epitope retrieval by 1mM EDTA in 10mM Tris buffer (pH8.5) at 120°C for 3min, [TA808721]) (1:150)



Immunohistochemical staining of paraffin-embedded Carcinoma of Human bladder tissue using anti-KIT mouse monoclonal antibody. (Heat-induced epitope retrieval by 1mM EDTA in 10mM Tris buffer (pH8.5) at 120°C for 3min, [TA808721]) (1:150)



Immunohistochemical staining of paraffin-embedded Human lymphoma tissue using anti-KIT mouse monoclonal antibody. (Heat-induced epitope retrieval by 1mM EDTA in 10mM Tris buffer (pH8.5) at 120°C for 3min, [TA808721]) (1:150)



Immunohistochemical staining of paraffin-embedded Human tonsil within the normal limits using anti-KIT mouse monoclonal antibody. (Heat-induced epitope retrieval by 1mM EDTA in 10mM Tris buffer (pH8.5) at 120°C for 3min, [TA808721]) (1:150)