

## Product datasheet for **CF808300**

### CD10 (MME) Mouse Monoclonal Antibody [Clone ID: OTI2A6]

#### Product data:

Product Type:	Primary Antibodies
Clone Name:	OTI2A6
Applications:	IHC
Recommended Dilution:	IHC 1:150
Reactivity:	Human, Mouse, Rat
Host:	Mouse
Isotype:	IgG2b
Clonality:	Monoclonal
Immunogen:	Synthetic peptide (the amino acid sequence is considered to be commercially sensitive) within Human CD10 ( NP_000893). The exact sequence is proprietary.
Formulation:	Lyophilized powder (original buffer 1X PBS, pH 7.3, 8% trehalose)
Reconstitution Method:	For reconstitution, we recommend adding 100uL distilled water to a final antibody concentration of about 1 mg/mL. To use this carrier-free antibody for conjugation experiment, we strongly recommend performing another round of desalting process. (OriGene recommends Zeba Spin Desalting Columns, 7KMWCO from Thermo Scientific)
Purification:	Purified from mouse ascites fluids or tissue culture supernatant by affinity chromatography (protein A/G)
Conjugation:	Unconjugated
Storage:	Store at -20°C as received.
Stability:	Stable for 12 months from date of receipt.
Predicted Protein Size:	85.3 kDa
Gene Name:	membrane metalloendopeptidase
Database Link:	<a href="#">NP_000893</a> <a href="#">Entrez Gene 17380 Mouse</a> <a href="#">Entrez Gene 24590 Rat</a> <a href="#">Entrez Gene 4311 Human</a> <a href="#">P08473</a>



[View online »](#)

**Background:**

This gene encodes a common acute lymphocytic leukemia antigen that is an important cell surface marker in the diagnosis of human acute lymphocytic leukemia (ALL). This protein is present on leukemic cells of pre-B phenotype, which represent 85% of cases of ALL. This protein is not restricted to leukemic cells, however, and is found on a variety of normal tissues. It is a glycoprotein that is particularly abundant in kidney, where it is present on the brush border of proximal tubules and on glomerular epithelium. The protein is a neutral endopeptidase that cleaves peptides at the amino side of hydrophobic residues and inactivates several peptide hormones including glucagon, enkephalins, substance P, neurotensin, oxytocin, and bradykinin. This gene, which encodes a 100-kD type II transmembrane glycoprotein, exists in a single copy of greater than 45 kb. The 5' untranslated region of this gene is alternatively spliced, resulting in four separate mRNA transcripts. The coding region is not affected by alternative splicing. [provided by RefSeq, Jul 2008]

**Synonyms:**

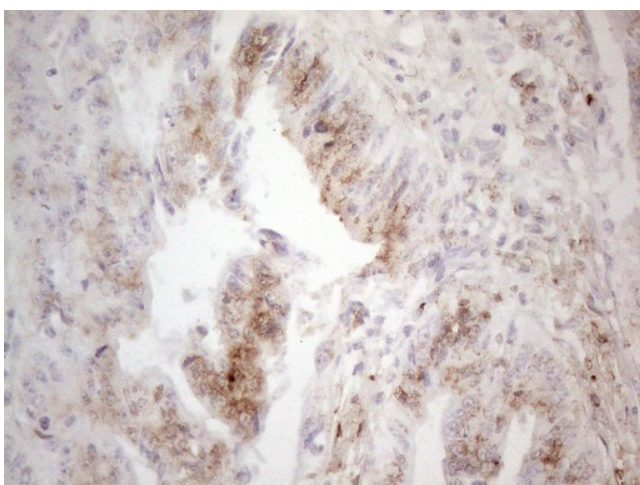
CALLA; CD10; CMT2T; NEP; SCA43; SFE

**Protein Families:**

Druggable Genome, Protease, Transmembrane

**Protein Pathways:**

Alzheimer's disease, Hematopoietic cell lineage, Renin-angiotensin system

**Product images:**

Immunohistochemical staining of paraffin-embedded Adenocarcinoma of Human colon tissue using anti-MME mouse monoclonal antibody. (Heat-induced epitope retrieval by 1mM EDTA in 10mM Tris buffer (pH8.5) at 120°C for 3min, [TA808300]) (1:150)