

Product datasheet for **CF807414**

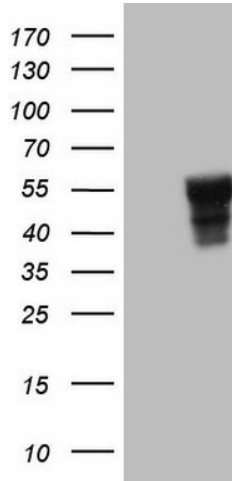
SLAMF7 Mouse Monoclonal Antibody [Clone ID: OTI3B3]

Product data:

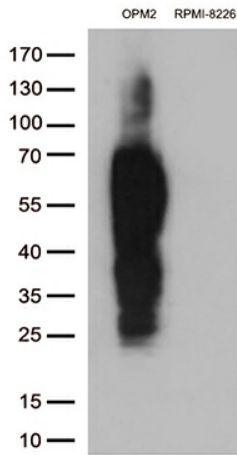
Product Type:	Primary Antibodies
Clone Name:	OTI3B3
Applications:	FC, IHC, WB
Recommended Dilution:	WB 1:2000, IHC 1:150
Reactivity:	Human
Host:	Mouse
Isotype:	IgG2b
Clonality:	Monoclonal
Immunogen:	Full length human recombinant protein of human SLAMF7 (NP_067004) produced in HEK293T cell.
Formulation:	Lyophilized powder (original buffer 1X PBS, pH 7.3, 8% trehalose)
Reconstitution Method:	For reconstitution, we recommend adding 100uL distilled water to a final antibody concentration of about 1 mg/mL. To use this carrier-free antibody for conjugation experiment, we strongly recommend performing another round of desalting process. (OriGene recommends Zeba Spin Desalting Columns, 7KMWCO from Thermo Scientific)
Purification:	Purified from mouse ascites fluids or tissue culture supernatant by affinity chromatography (protein A/G)
Conjugation:	Unconjugated
Storage:	Store at -20°C as received.
Stability:	Stable for 12 months from date of receipt.
Predicted Protein Size:	37.2 kDa
Gene Name:	SLAM family member 7
Database Link:	NP_067004 Entrez Gene 57823 Human Q9NQ25
Synonyms:	19A; CD319; CRACC; CS1
Protein Families:	Druggable Genome, Transmembrane



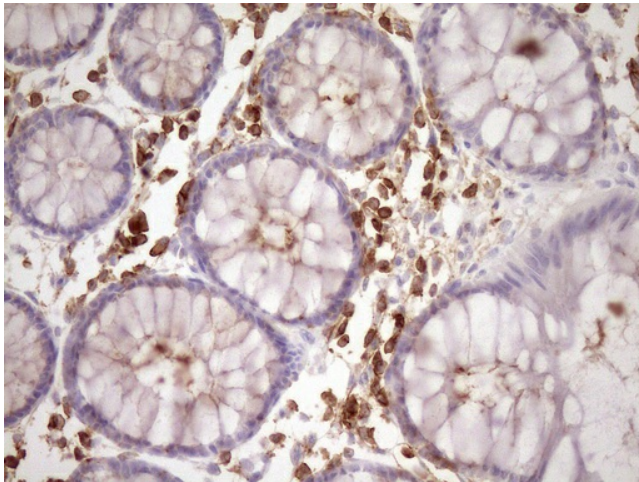
[View online »](#)

Product images:


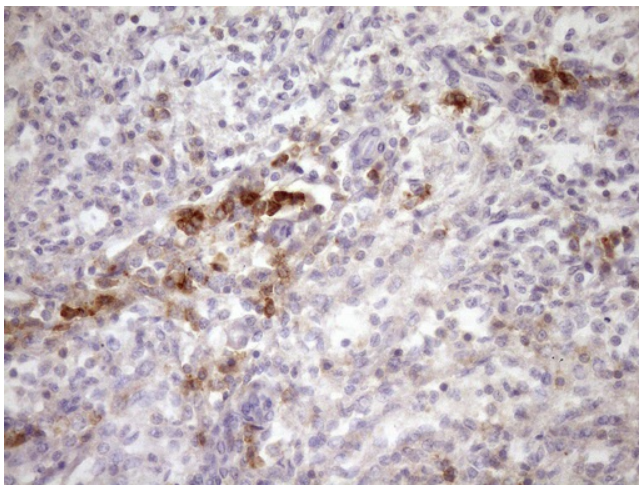
HEK293T cells were transfected with the pCMV6-ENTRY control (Cat# [PS100001], Left lane) or pCMV6-ENTRY SLAMF7 (Cat# [RC220985], Right lane) cDNA for 48 hrs and lysed. Equivalent amounts of cell lysates (5 ug per lane) were separated by SDS-PAGE and immunoblotted with anti-SLAMF7 (Cat# [TA807414])(1:2000). Positive lysates [LY402852] (100ug) and [LC402852] (20ug) can be purchased separately from OriGene.



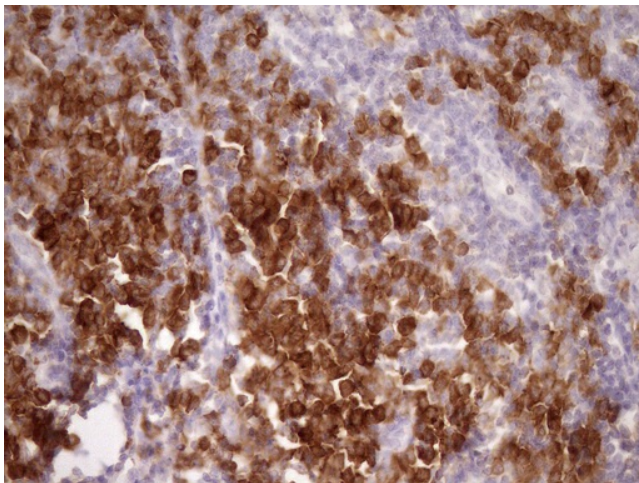
Western blot analysis of extracts (35ug) from 2 cell lines lysates by using anti-SLAMF7 monoclonal antibody (1:500).



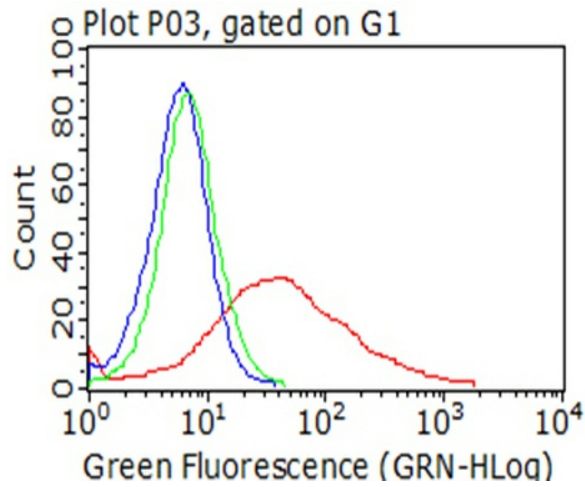
Immunohistochemical staining of paraffin-embedded Human colon tissue within the normal limits using anti-SLAMF7 mouse monoclonal antibody. (Heat-induced epitope retrieval by Tris-EDTA, pH8.0, [TA807414]) (1:150)



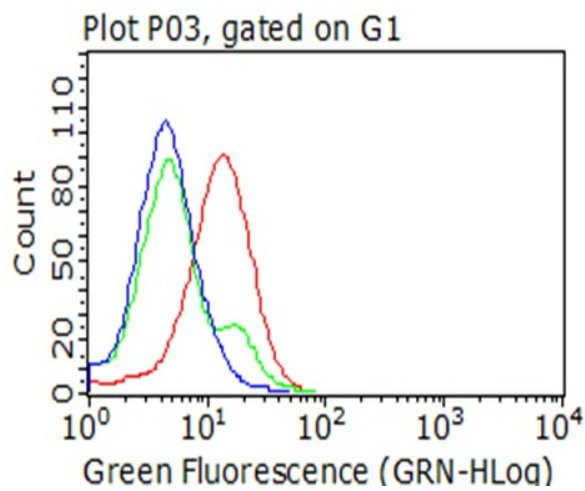
Immunohistochemical staining of paraffin-embedded Human thyroid tissue within the normal limits using anti-SLAMF7 mouse monoclonal antibody. (Heat-induced epitope retrieval by Tris-EDTA, pH8.0, [TA807414]) (1:150)



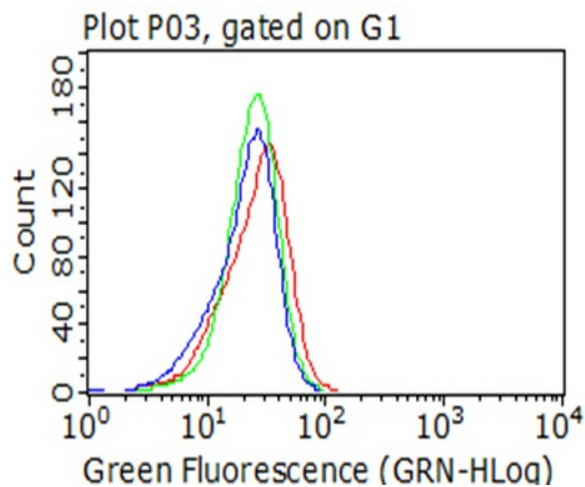
Immunohistochemical staining of paraffin-embedded Human tonsil within the normal limits using anti-SLAMF7 mouse monoclonal antibody. (Heat-induced epitope retrieval by Tris-EDTA, pH8.0, [TA807414]) (1:150)



Flow cytometric analysis of living 293T cells transfected with SLAMF7 overexpression plasmid ([RC220985]), Red)/empty vector ([PS100001], Blue) using anti-SLAMF7 antibody ([TA807414]). Cells incubated with a non-specific antibody (Green) were used as isotype control (1:100).



Flow cytometric analysis of living OPM2 cells, using anti-SLAMF7 antibody ([TA807414], Red), compared to an isotype control (green), and a PBS control (blue) (1:100).



Flow cytometric analysis of living RPMI-8226 cells, using anti-SLAMF7 antibody ([TA807414], Red), compared to an isotype control (green), and a PBS control (blue) (1:100).