

Product datasheet for **CF806987**

Cytokeratin 8 (KRT8) Mouse Monoclonal Antibody [Clone ID: OTI2F5]

Product data:

Product Type:	Primary Antibodies
Clone Name:	OTI2F5
Applications:	IHC, WB
Recommended Dilution:	IHC 1:2000
Reactivity:	Human, Mouse, Rat
Host:	Mouse
Isotype:	IgG2b
Clonality:	Monoclonal
Immunogen:	Human recombinant protein fragment corresponding to amino acids 91-381 of human KRT8(NP_002264) produced in E.coli.
Formulation:	Lyophilized powder (original buffer 1X PBS, pH 7.3, 8% trehalose)
Reconstitution Method:	For reconstitution, we recommend adding 100uL distilled water to a final antibody concentration of about 1 mg/mL. To use this carrier-free antibody for conjugation experiment, we strongly recommend performing another round of desalting process. (OriGene recommends Zeba Spin Desalting Columns, 7KMWCO from Thermo Scientific)
Purification:	Purified from mouse ascites fluids or tissue culture supernatant by affinity chromatography (protein A/G)
Conjugation:	Unconjugated
Storage:	Store at -20°C as received.
Stability:	Stable for 12 months from date of receipt.
Predicted Protein Size:	53.5 kDa
Gene Name:	keratin 8
Database Link:	NP_002264 Entrez Gene 16691 Mouse Entrez Gene 25626 Rat Entrez Gene 3856 Human P05787



[View online »](#)

Background:

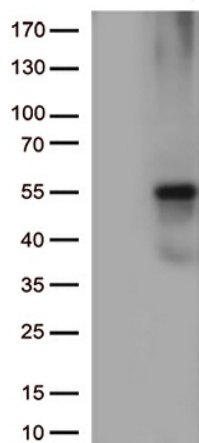
This gene is a member of the type II keratin family clustered on the long arm of chromosome 12. Type I and type II keratins heteropolymerize to form intermediate-sized filaments in the cytoplasm of epithelial cells. The product of this gene typically dimerizes with keratin 18 to form an intermediate filament in simple single-layered epithelial cells. This protein plays a role in maintaining cellular structural integrity and also functions in signal transduction and cellular differentiation. Mutations in this gene cause cryptogenic cirrhosis. Alternatively spliced transcript variants have been found for this gene. [provided by RefSeq, Jan 2012]

Synonyms:

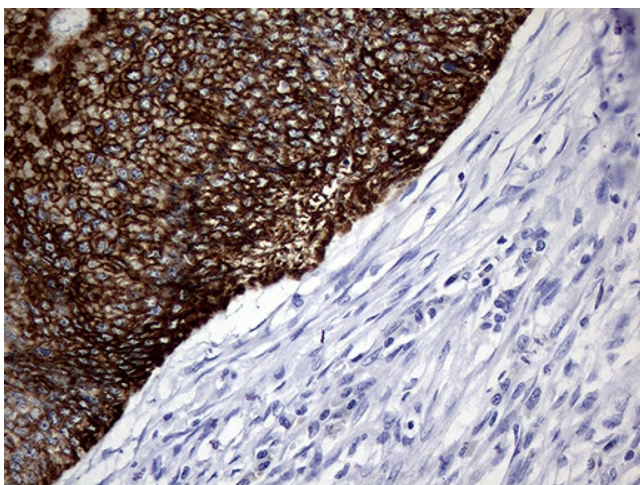
CARD2; CK-8; CK8; CYK8; K2C8; K8; KO

Protein Families:

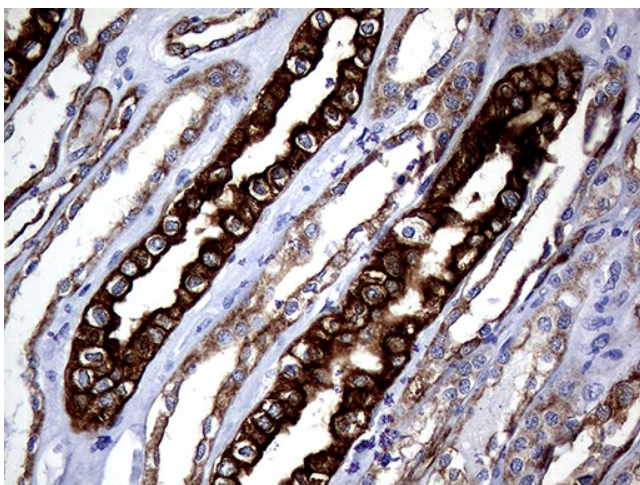
Druggable Genome

Product images:

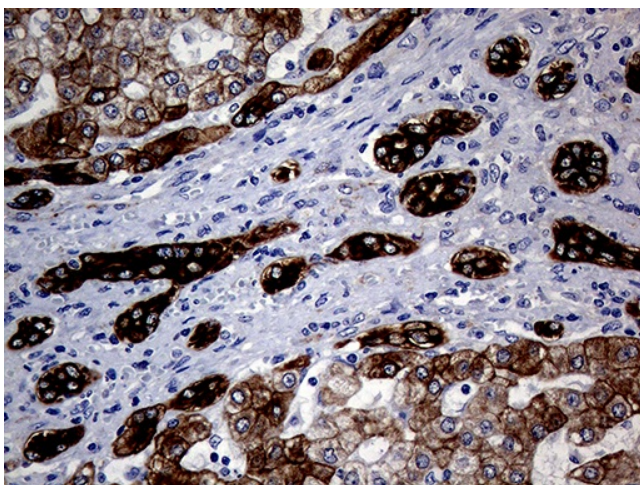
HEK293T cells were transfected with the pCMV6-ENTRY control (Left lane) or pCMV6-ENTRY KRT8 ([RC209570], Right lane) cDNA for 48 hrs and lysed. Equivalent amounts of cell lysates (5 ug per lane) were separated by SDS-PAGE and immunoblotted with anti-KRT8 (1:500).



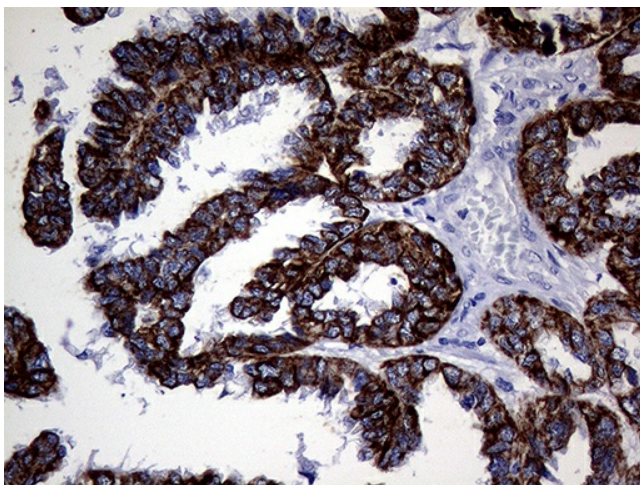
Immunohistochemical staining of paraffin-embedded Adenocarcinoma of Human colon tissue using anti-KRT8 mouse monoclonal antibody. (Heat-induced epitope retrieval by 1mM EDTA in 10mM Tris buffer (pH8.5) at 120°C for 3min, [TA806987]) (1:2000)



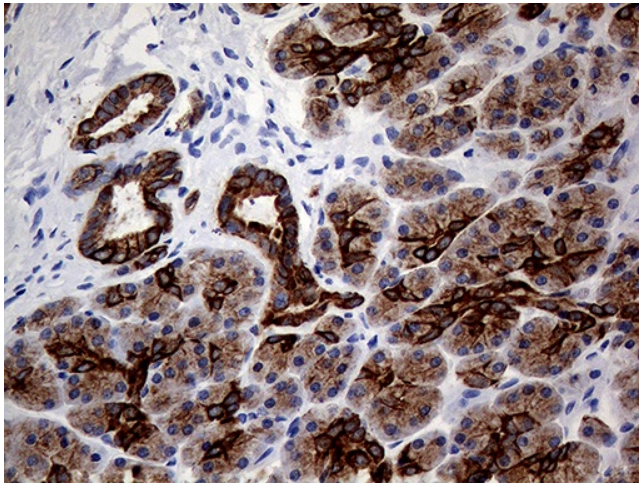
Immunohistochemical staining of paraffin-embedded Human Kidney tissue within the normal limits using anti-KRT8 mouse monoclonal antibody. (Heat-induced epitope retrieval by 1mM EDTA in 10mM Tris buffer (pH8.5) at 120°C for 3min, [TA806987]) (1:2000)



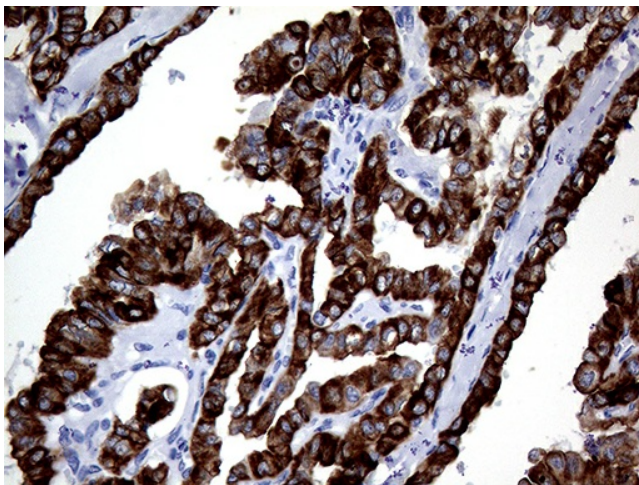
Immunohistochemical staining of paraffin-embedded Carcinoma of Human liver tissue using anti-KRT8 mouse monoclonal antibody. (Heat-induced epitope retrieval by 1mM EDTA in 10mM Tris buffer (pH8.5) at 120°C for 3min, [TA806987]) (1:2000)



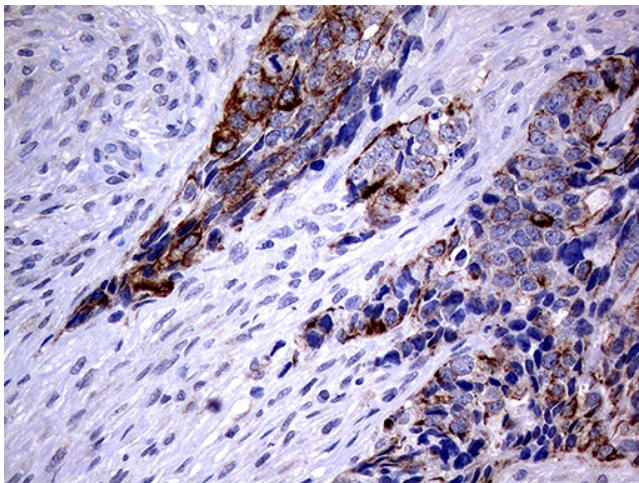
Immunohistochemical staining of paraffin-embedded Adenocarcinoma of Human ovary tissue using anti-KRT8 mouse monoclonal antibody. (Heat-induced epitope retrieval by 1mM EDTA in 10mM Tris buffer (pH8.5) at 120°C for 3min, [TA806987]) (1:2000)



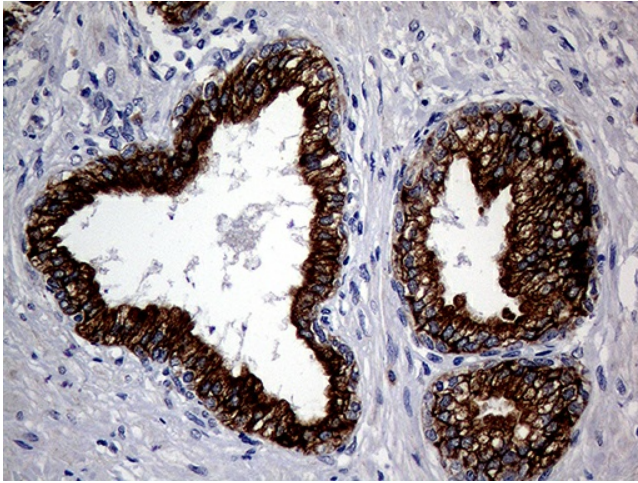
Immunohistochemical staining of paraffin-embedded Human pancreas tissue within the normal limits using anti-KRT8 mouse monoclonal antibody. (Heat-induced epitope retrieval by 1mM EDTA in 10mM Tris buffer (pH8.5) at 120°C for 3min, [TA806987]) (1:2000)



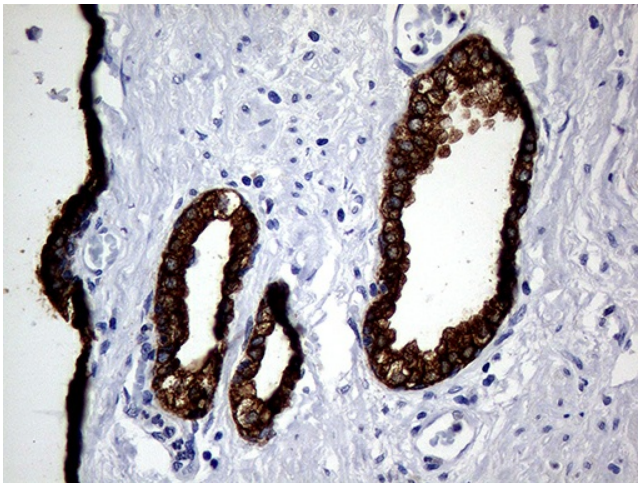
Immunohistochemical staining of paraffin-embedded Carcinoma of Human thyroid tissue using anti-KRT8 mouse monoclonal antibody. (Heat-induced epitope retrieval by 1mM EDTA in 10mM Tris buffer (pH8.5) at 120°C for 3min, [TA806987]) (1:2000)



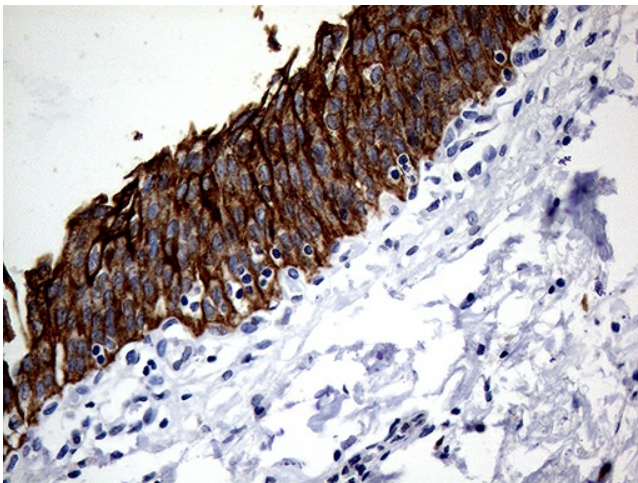
Immunohistochemical staining of paraffin-embedded Adenocarcinoma of Human endometrium tissue using anti-KRT8 mouse monoclonal antibody. (Heat-induced epitope retrieval by 1mM EDTA in 10mM Tris buffer (pH8.5) at 120°C for 3min, [TA806987]) (1:2000)



Immunohistochemical staining of paraffin-embedded Human prostate tissue within the normal limits using anti-KRT8 mouse monoclonal antibody. (Heat-induced epitope retrieval by 1mM EDTA in 10mM Tris buffer (pH8.5) at 120°C for 3min, [TA806987]) (1:2000)



Immunohistochemical staining of paraffin-embedded Carcinoma of Human prostate tissue using anti-KRT8 mouse monoclonal antibody. (Heat-induced epitope retrieval by 1mM EDTA in 10mM Tris buffer (pH8.5) at 120°C for 3min, [TA806987]) (1:2000)



Immunohistochemical staining of paraffin-embedded Human bladder tissue within the normal limits using anti-KRT8 mouse monoclonal antibody. (Heat-induced epitope retrieval by 1mM EDTA in 10mM Tris buffer (pH8.5) at 120°C for 3min, [TA806987]) (1:2000)