

## Product datasheet for **CF806809**

### PD1 (PDCD1) Mouse Monoclonal Antibody [Clone ID: OTI2D10]

#### Product data:

Product Type:	Primary Antibodies
Clone Name:	OTI2D10
Applications:	IHC, WB
Recommended Dilution:	IHC 1:150
Reactivity:	Human
Host:	Mouse
Isotype:	IgG2b
Clonality:	Monoclonal
Immunogen:	Full length human recombinant protein of human PDCD1 (NP_005009) produced in HEK293T cell.
Formulation:	Lyophilized powder (original buffer 1X PBS, pH 7.3, 8% trehalose)
Reconstitution Method:	For reconstitution, we recommend adding 100uL distilled water to a final antibody concentration of about 1 mg/mL. To use this carrier-free antibody for conjugation experiment, we strongly recommend performing another round of desalting process. (OriGene recommends Zeba Spin Desalting Columns, 7KMWCO from Thermo Scientific)
Purification:	Purified from mouse ascites fluids or tissue culture supernatant by affinity chromatography (protein A/G)
Conjugation:	Unconjugated
Storage:	Store at -20°C as received.
Stability:	Stable for 12 months from date of receipt.
Predicted Protein Size:	29.2 kDa
Gene Name:	programmed cell death 1
Database Link:	<a href="#">NP_005009</a> <a href="#">Entrez Gene 5133 Human Q15116</a>



[View online »](#)

**Background:**

This gene encodes a cell surface membrane protein of the immunoglobulin superfamily. This protein is expressed in pro-B-cells and is thought to play a role in their differentiation. In mice, expression of this gene is induced in the thymus when anti-CD3 antibodies are injected and large numbers of thymocytes undergo apoptosis. Mice deficient for this gene bred on a BALB/c background developed dilated cardiomyopathy and died from congestive heart failure. These studies suggest that this gene product may also be important in T cell function and contribute to the prevention of autoimmune diseases. [provided by RefSeq, Jul 2008]

**Synonyms:**

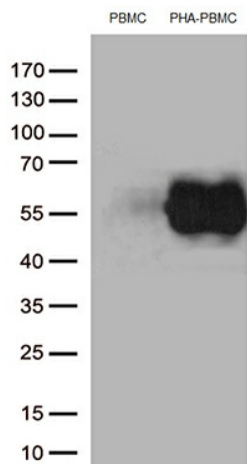
CD279; hPD-1; hPD-I; hSLE1; PD-1; PD1; SLEB2

**Protein Families:**

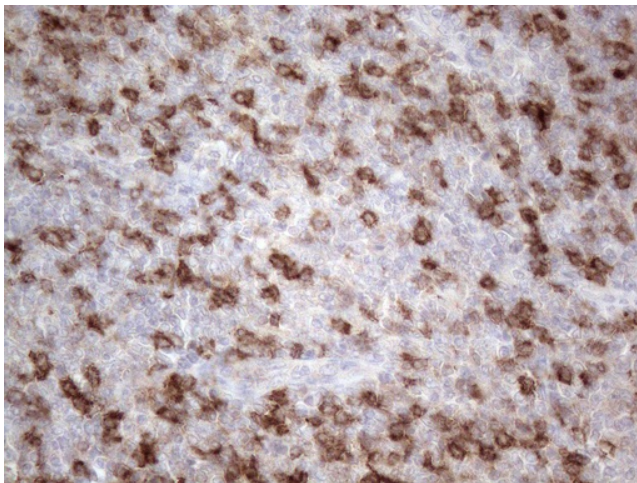
Druggable Genome, Transmembrane

**Protein Pathways:**

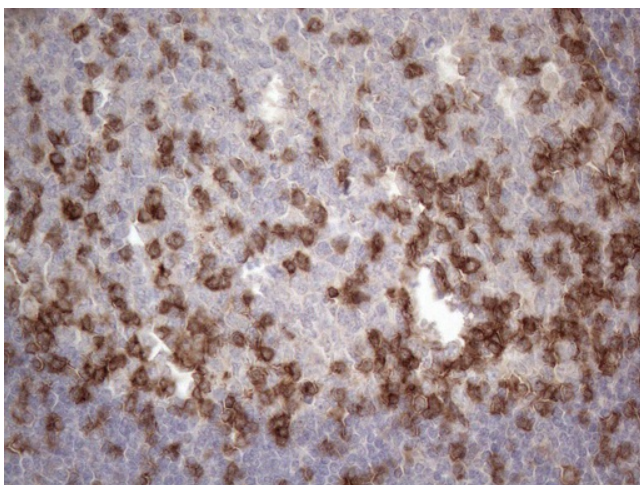
Cell adhesion molecules (CAMs), T cell receptor signaling pathway

**Product images:**


Western blot analysis of extracts (35ug) from PBMCs and PHA-stimulated-PBMCs by using anti-PDCD1 monoclonal antibody (1:250).



Immunohistochemical staining of paraffin-embedded Human Lymphoma tissue using anti-PDCD1 mouse monoclonal antibody. (Heat-induced epitope retrieval by 1mM EDTA in 10mM Tris buffer (pH8.5) at 120°C for 3min, [TA806809]) (1:150)



Immunohistochemical staining of paraffin-embedded Human tonsil within the normal limits using anti-PDCD1 mouse monoclonal antibody. (Heat-induced epitope retrieval by 1mM EDTA in 10mM Tris buffer (pH8.5) at 120°C for 3min, [TA806809]) (1:150)