

## Product datasheet for **CF806188**

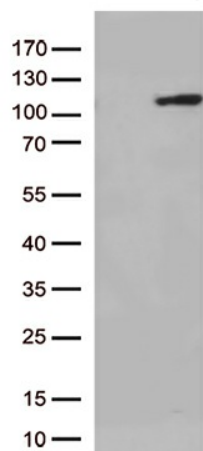
### Glucocorticoid Receptor (NR3C1) Mouse Monoclonal Antibody [Clone ID: OTI2E12]

#### Product data:

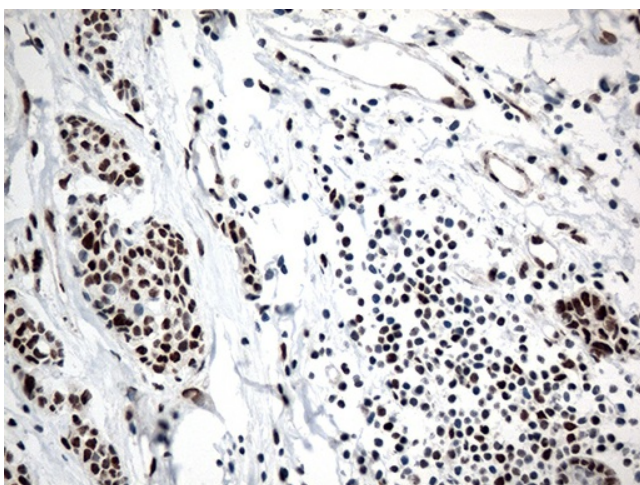
Product Type:	Primary Antibodies
Clone Name:	OTI2E12
Applications:	IHC, WB
Recommended Dilution:	WB 1:2000
Reactivity:	Human, Mouse, Rat
Host:	Mouse
Isotype:	IgG1
Clonality:	Monoclonal
Immunogen:	Human recombinant protein fragment corresponding to amino acids 1-265 of human NR3C1(NP_000167) produced in E.coli.
Formulation:	Lyophilized powder (original buffer 1X PBS, pH 7.3, 8% trehalose)
Reconstitution Method:	For reconstitution, we recommend adding 100uL distilled water to a final antibody concentration of about 1 mg/mL. To use this carrier-free antibody for conjugation experiment, we strongly recommend performing another round of desalting process. (OriGene recommends Zeba Spin Desalting Columns, 7KMWCO from Thermo Scientific)
Purification:	Purified from mouse ascites fluids or tissue culture supernatant by affinity chromatography (protein A/G)
Conjugation:	Unconjugated
Storage:	Store at -20°C as received.
Stability:	Stable for 12 months from date of receipt.
Gene Name:	nuclear receptor subfamily 3 group C member 1
Database Link:	<a href="#">NP_000167</a> <a href="#">Entrez Gene 14815 Mouse</a> <a href="#">Entrez Gene 24413 Rat</a> <a href="#">Entrez Gene 2908 Human</a> <a href="#">P04150</a>
Synonyms:	GCCR; GCR; GCRST; GR; GRL
Protein Families:	Druggable Genome, Nuclear Hormone Receptor, Transcription Factors
Protein Pathways:	Neuroactive ligand-receptor interaction



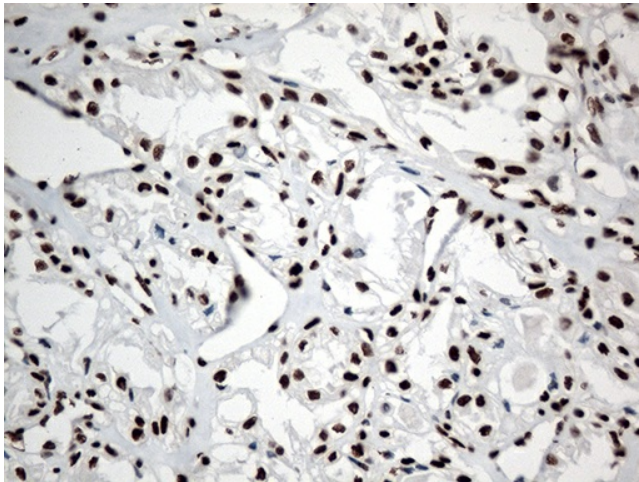
[View online »](#)

**Product images:**

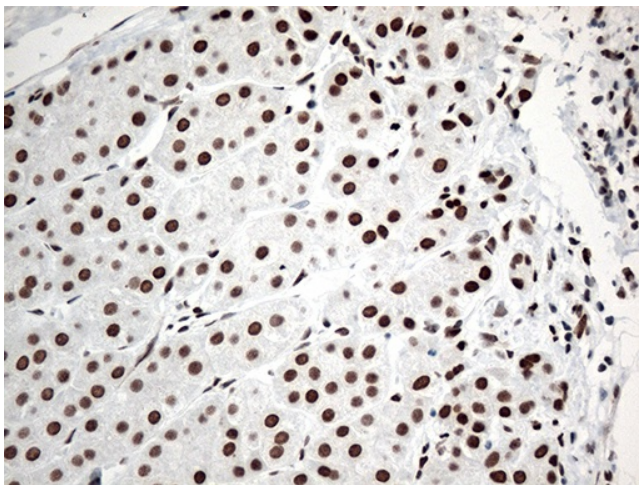
HEK293T cells were transfected with the pCMV6-ENTRY control (Left lane) or pCMV6-ENTRY NR3C1 ([RC220189], Right lane) cDNA for 48 hrs and lysed. Equivalent amounts of cell lysates (5 ug per lane) were separated by SDS-PAGE and immunoblotted with anti-NR3C1 (1:500).



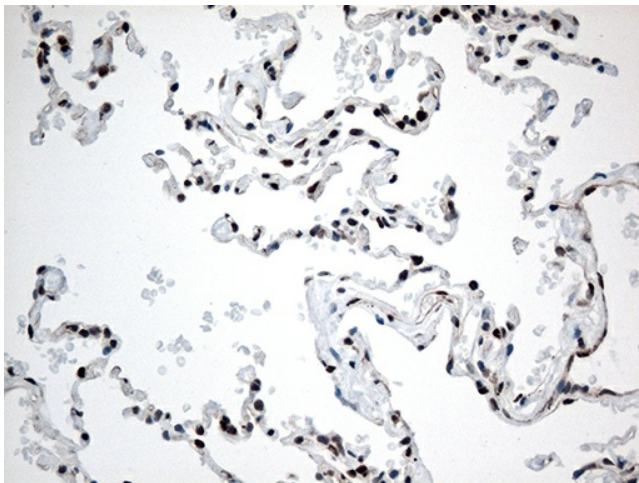
Immunohistochemical staining of paraffin-embedded Adenocarcinoma of Human breast tissue using anti-NR3C1 mouse monoclonal antibody. (Heat-induced epitope retrieval by 1mM EDTA in 10mM Tris buffer (pH8.5) at 120°C for 3min, [TA806188]) (1:500)



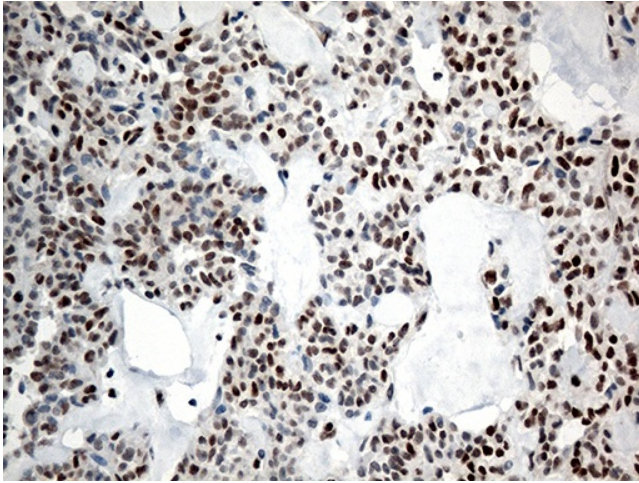
Immunohistochemical staining of paraffin-embedded Carcinoma of Human kidney tissue using anti-NR3C1 mouse monoclonal antibody. (Heat-induced epitope retrieval by 1mM EDTA in 10mM Tris buffer (pH8.5) at 120°C for 3min, [TA806188]) (1:500)



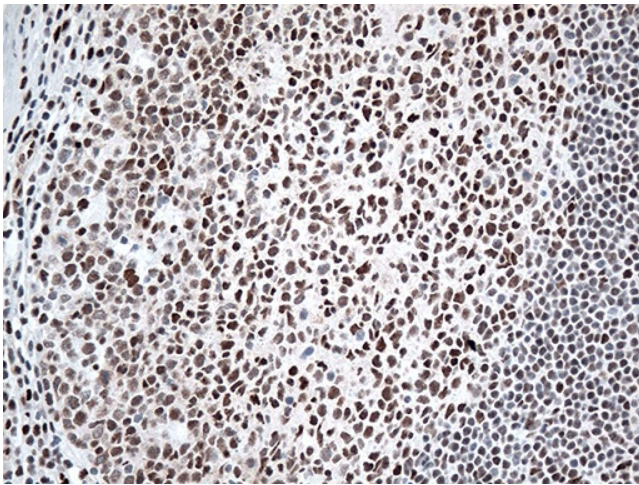
Immunohistochemical staining of paraffin-embedded Carcinoma of Human liver tissue using anti-NR3C1 mouse monoclonal antibody. (Heat-induced epitope retrieval by 1mM EDTA in 10mM Tris buffer (pH8.5) at 120°C for 3min, [TA806188]) (1:500)



Immunohistochemical staining of paraffin-embedded Human lung tissue within the normal limits using anti-NR3C1 mouse monoclonal antibody. (Heat-induced epitope retrieval by 1mM EDTA in 10mM Tris buffer (pH8.5) at 120°C for 3min, [TA806188]) (1:500)



Immunohistochemical staining of paraffin-embedded Carcinoma of Human pancreas tissue using anti-NR3C1 mouse monoclonal antibody. (Heat-induced epitope retrieval by 1mM EDTA in 10mM Tris buffer (pH8.5) at 120°C for 3min, [TA806188]) (1:500)



Immunohistochemical staining of paraffin-embedded Human tonsil within the normal limits using anti-NR3C1 mouse monoclonal antibody. (Heat-induced epitope retrieval by 1mM EDTA in 10mM Tris buffer (pH8.5) at 120°C for 3min, [TA806188]) (1:500)