

## Product datasheet for **CF805281**

### **GARS1 Mouse Monoclonal Antibody [Clone ID: OTI4G4]**

#### **Product data:**

<b>Product Type:</b>	Primary Antibodies
<b>Clone Name:</b>	OTI4G4
<b>Applications:</b>	IHC
<b>Recommended Dilution:</b>	IHC 1:150
<b>Reactivity:</b>	Human, Mouse, Rat
<b>Host:</b>	Mouse
<b>Isotype:</b>	IgG1
<b>Clonality:</b>	Monoclonal
<b>Immunogen:</b>	Full length human recombinant protein of human GARS (NP_002038) produced in HEK293T cell.
<b>Formulation:</b>	Lyophilized powder (original buffer 1X PBS, pH 7.3, 8% trehalose)
<b>Reconstitution Method:</b>	For reconstitution, we recommend adding 100uL distilled water to a final antibody concentration of about 1 mg/mL. To use this carrier-free antibody for conjugation experiment, we strongly recommend performing another round of desalting process. (OriGene recommends Zeba Spin Desalting Columns, 7KMWCO from Thermo Scientific)
<b>Purification:</b>	Purified from mouse ascites fluids or tissue culture supernatant by affinity chromatography (protein A/G)
<b>Conjugation:</b>	Unconjugated
<b>Storage:</b>	Store at -20°C as received.
<b>Stability:</b>	Stable for 12 months from date of receipt.
<b>Predicted Protein Size:</b>	83 kDa
<b>Gene Name:</b>	glycyl-tRNA synthetase 1
<b>Database Link:</b>	<a href="#">NP_002038</a> <a href="#">Entrez Gene 297113 Rat</a> <a href="#">Entrez Gene 353172 Mouse</a> <a href="#">Entrez Gene 2617 Human</a> <a href="#">P41250</a>



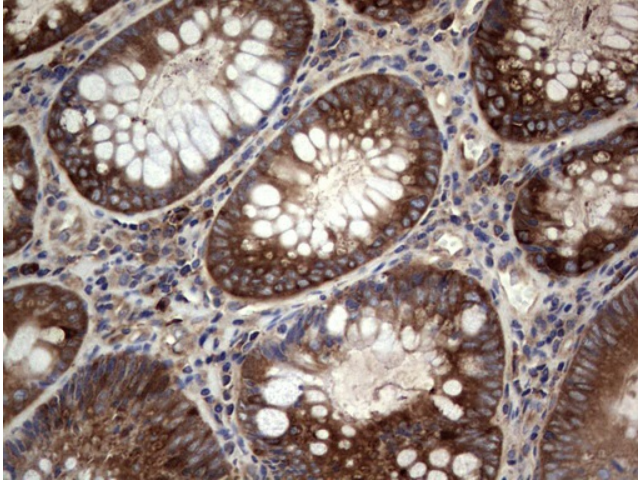
[View online »](#)

**Background:** This gene encodes glycyl-tRNA synthetase, one of the aminoacyl-tRNA synthetases that charge tRNAs with their cognate amino acids. The encoded enzyme is an (alpha)<sub>2</sub> dimer which belongs to the class II family of tRNA synthetases. It has been shown to be a target of autoantibodies in the human autoimmune diseases, polymyositis or dermatomyositis. [provided by RefSeq, Jul 2008]

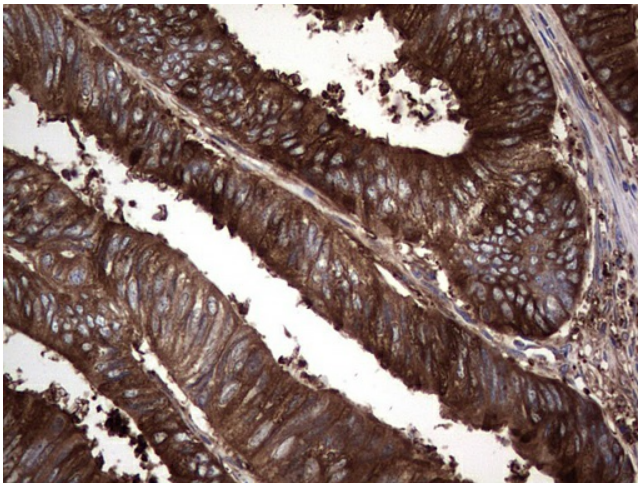
**Synonyms:** CMT2D; DSMAV; GlyRS; HMN5; SMAD1

**Protein Pathways:** Aminoacyl-tRNA biosynthesis

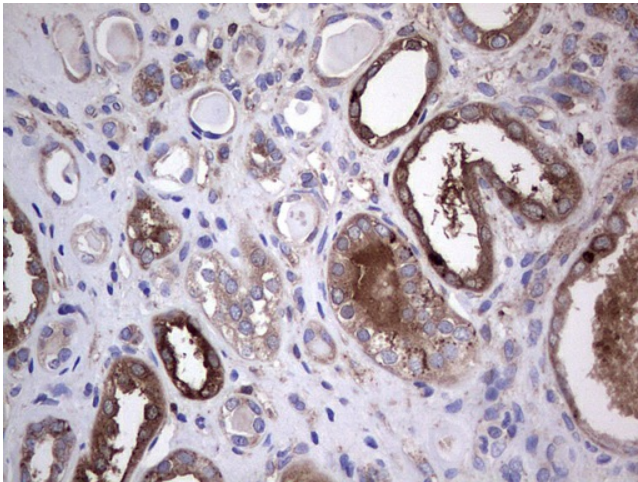
**Product images:**



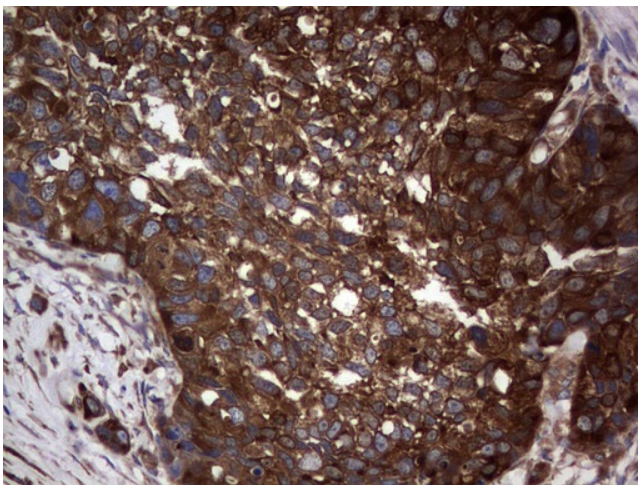
Immunohistochemical staining of paraffin-embedded Human colon tissue within the normal limits using anti-GARS mouse monoclonal antibody. (Heat-induced epitope retrieval by 1mM EDTA in 10mM Tris, pH8.5, 120°C for 3min, [TA805281])



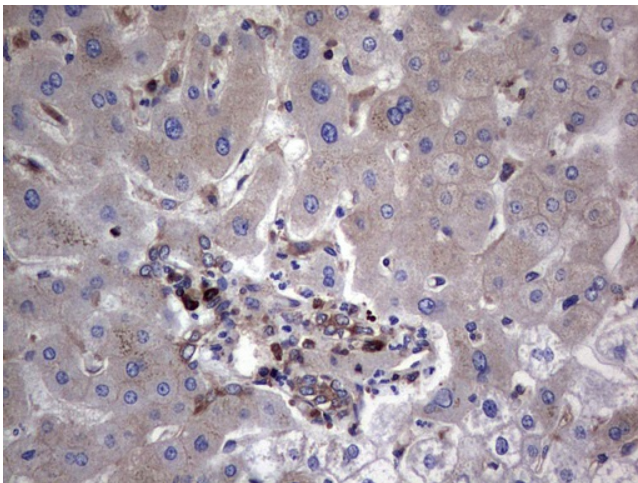
Immunohistochemical staining of paraffin-embedded Adenocarcinoma of Human colon tissue using anti-GARS mouse monoclonal antibody. (Heat-induced epitope retrieval by 1mM EDTA in 10mM Tris, pH8.5, 120°C for 3min, [TA805281])



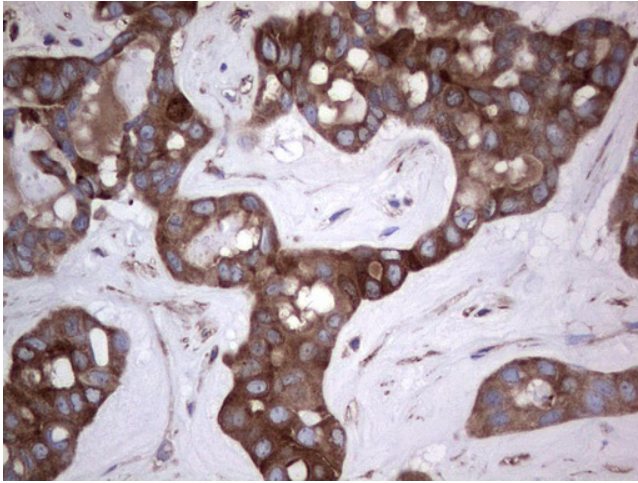
Immunohistochemical staining of paraffin-embedded Human Kidney tissue within the normal limits using anti-GARS mouse monoclonal antibody. (Heat-induced epitope retrieval by 1mM EDTA in 10mM Tris, pH8.5, 120°C for 3min, [TA805281])



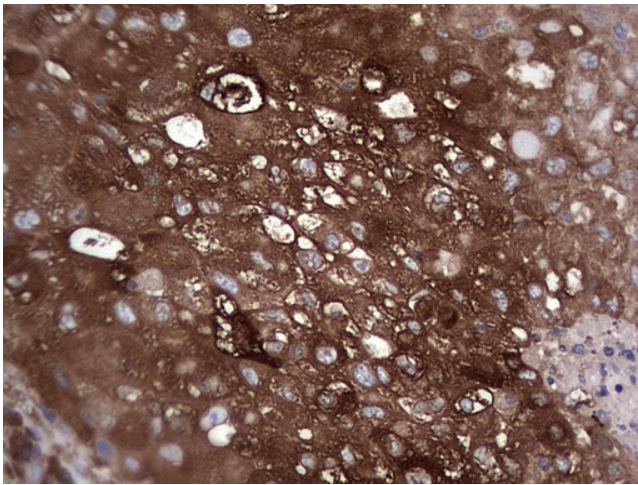
Immunohistochemical staining of paraffin-embedded Carcinoma of Human kidney tissue using anti-GARS mouse monoclonal antibody. (Heat-induced epitope retrieval by 1mM EDTA in 10mM Tris, pH8.5, 120°C for 3min, [TA805281])



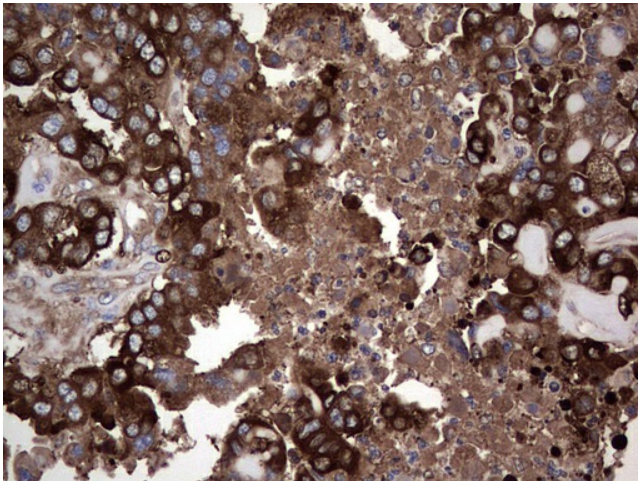
Immunohistochemical staining of paraffin-embedded Human liver tissue within the normal limits using anti-GARS mouse monoclonal antibody. (Heat-induced epitope retrieval by 1mM EDTA in 10mM Tris, pH8.5, 120°C for 3min, [TA805281])



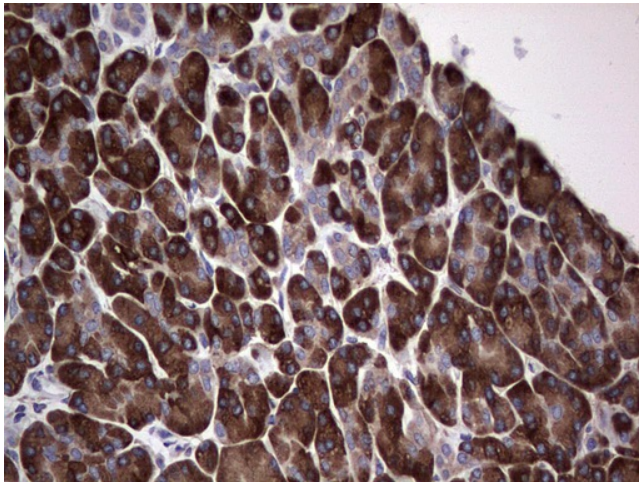
Immunohistochemical staining of paraffin-embedded Carcinoma of Human liver tissue using anti-GARS mouse monoclonal antibody. (Heat-induced epitope retrieval by 1mM EDTA in 10mM Tris, pH8.5, 120°C for 3min, [TA805281])



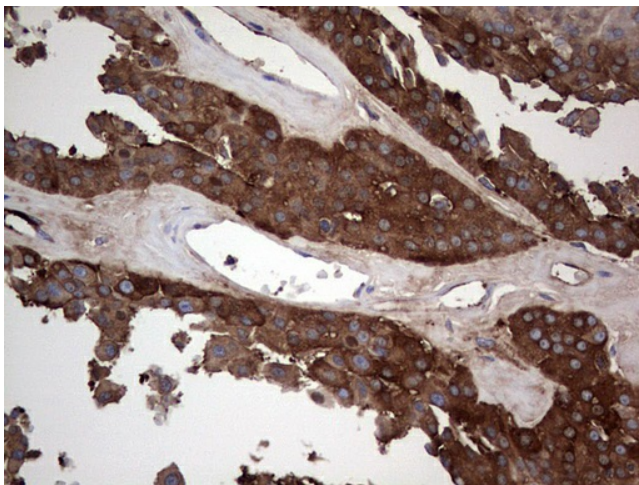
Immunohistochemical staining of paraffin-embedded Carcinoma of Human lung tissue using anti-GARS mouse monoclonal antibody. (Heat-induced epitope retrieval by 1mM EDTA in 10mM Tris, pH8.5, 120°C for 3min, [TA805281])



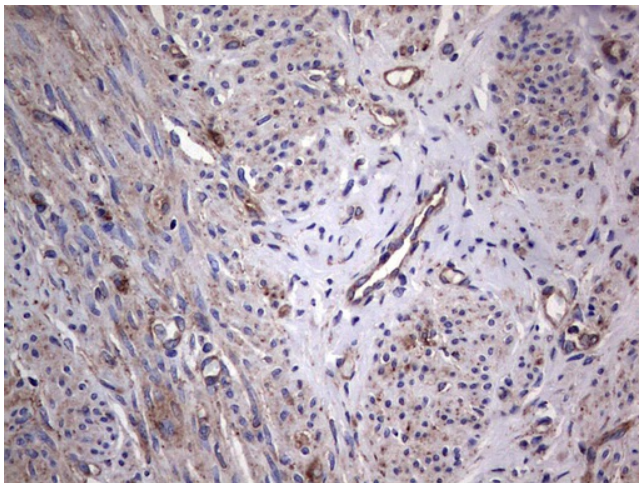
Immunohistochemical staining of paraffin-embedded Adenocarcinoma of Human ovary tissue using anti-GARS mouse monoclonal antibody. (Heat-induced epitope retrieval by 1mM EDTA in 10mM Tris, pH8.5, 120°C for 3min, [TA805281])



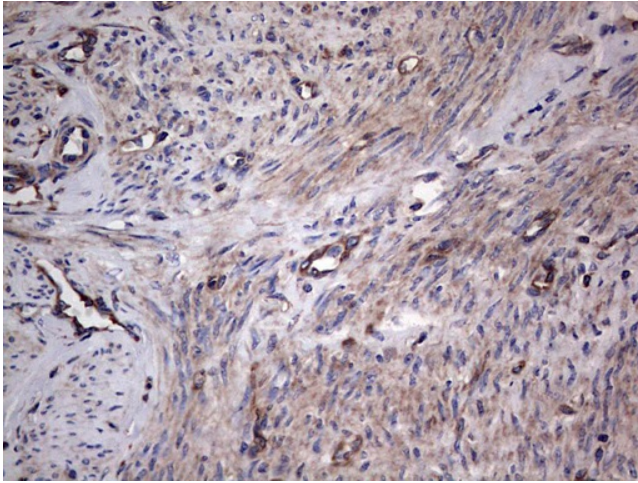
Immunohistochemical staining of paraffin-embedded Human pancreas tissue within the normal limits using anti-GARS mouse monoclonal antibody. (Heat-induced epitope retrieval by 1mM EDTA in 10mM Tris, pH8.5, 120°C for 3min, [TA805281])



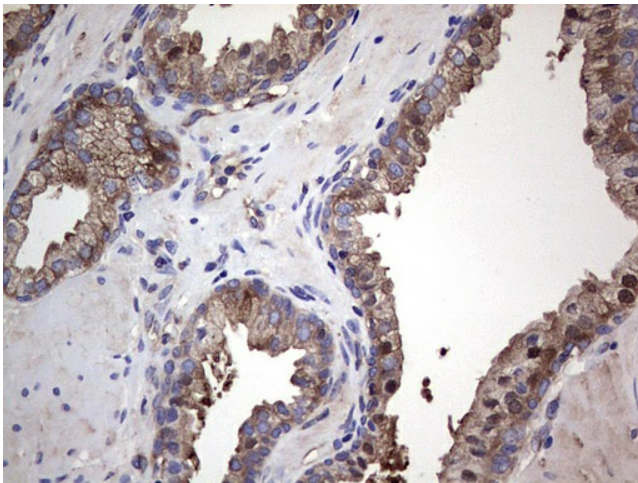
Immunohistochemical staining of paraffin-embedded Carcinoma of Human thyroid tissue using anti-GARS mouse monoclonal antibody. (Heat-induced epitope retrieval by 1mM EDTA in 10mM Tris, pH8.5, 120°C for 3min, [TA805281])



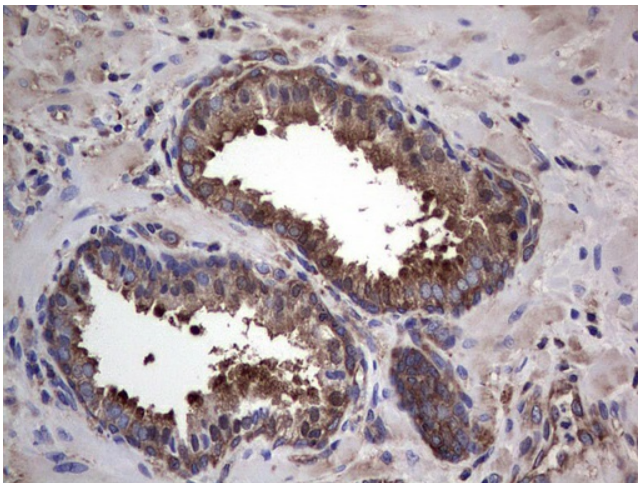
Immunohistochemical staining of paraffin-embedded Human endometrium tissue within the normal limits using anti-GARS mouse monoclonal antibody. (Heat-induced epitope retrieval by 1mM EDTA in 10mM Tris, pH8.5, 120°C for 3min, [TA805281])



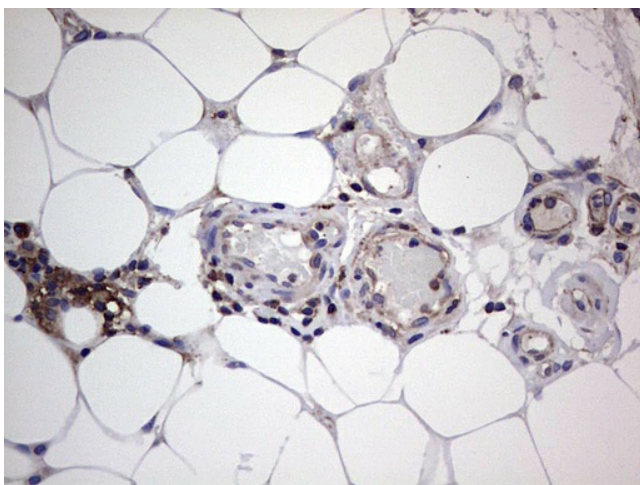
Immunohistochemical staining of paraffin-embedded Adenocarcinoma of Human endometrium tissue using anti-GARS mouse monoclonal antibody. (Heat-induced epitope retrieval by 1mM EDTA in 10mM Tris, pH8.5, 120°C for 3min, [TA805281])



Immunohistochemical staining of paraffin-embedded Human prostate tissue within the normal limits using anti-GARS mouse monoclonal antibody. (Heat-induced epitope retrieval by 1mM EDTA in 10mM Tris, pH8.5, 120°C for 3min, [TA805281])



Immunohistochemical staining of paraffin-embedded Carcinoma of Human prostate tissue using anti-GARS mouse monoclonal antibody. (Heat-induced epitope retrieval by 1mM EDTA in 10mM Tris, pH8.5, 120°C for 3min, [TA805281])



Immunohistochemical staining of paraffin-embedded Carcinoma of Human bladder tissue using anti-GARS mouse monoclonal antibody. (Heat-induced epitope retrieval by 1mM EDTA in 10mM Tris, pH8.5, 120°C for 3min, [TA805281])