

## Product datasheet for **CF804094**

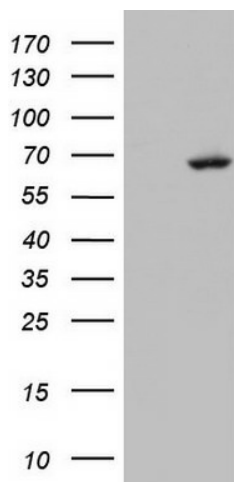
### ARIH2 Mouse Monoclonal Antibody [Clone ID: OTI3F9]

#### Product data:

Product Type:	Primary Antibodies
Clone Name:	OTI3F9
Applications:	WB
Recommended Dilution:	WB 1:2000
Reactivity:	Human, Mouse, Rat
Host:	Mouse
Isotype:	IgG1
Clonality:	Monoclonal
Immunogen:	Human recombinant protein fragment corresponding to amino acids 201-493 of human ARIH2 (NP_006312) produced in E.coli.
Formulation:	Lyophilized powder (original buffer 1X PBS, pH 7.3, 8% trehalose)
Reconstitution Method:	For reconstitution, we recommend adding 100uL distilled water to a final antibody concentration of about 1 mg/mL. To use this carrier-free antibody for conjugation experiment, we strongly recommend performing another round of desalting process. (OriGene recommends Zeba Spin Desalting Columns, 7KMWCO from Thermo Scientific)
Purification:	Purified from mouse ascites fluids or tissue culture supernatant by affinity chromatography (protein A/G)
Conjugation:	Unconjugated
Storage:	Store at -20°C as received.
Stability:	Stable for 12 months from date of receipt.
Predicted Protein Size:	57.6 kDa
Gene Name:	ariadne RBR E3 ubiquitin protein ligase 2
Database Link:	<a href="#">NP_006312</a> <a href="#">Entrez Gene 23807 Mouse</a> <a href="#">Entrez Gene 316005 Rat</a> <a href="#">Entrez Gene 10425 Human</a> <a href="#">O95376</a>
Synonyms:	ARI2; TRIAD1
Protein Families:	Druggable Genome



[View online »](#)

**Product images:**

HEK293T cells were transfected with the pCMV6-ENTRY control (Left lane) or pCMV6-ENTRY ARIH2 ([RC201846], Right lane) cDNA for 48 hrs and lysed. Equivalent amounts of cell lysates (5 ug per lane) were separated by SDS-PAGE and immunoblotted with anti-ARIH2. Positive lysates [LY416714] (100ug) and [LC416714] (20ug) can be purchased separately from OriGene.