

Product datasheet for **CF804055**

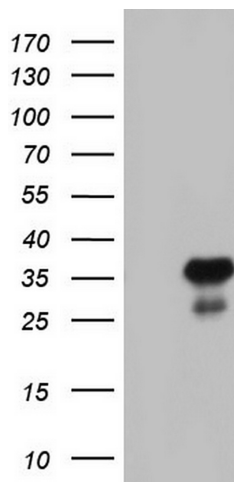
C14orf166 (RTRAF) Mouse Monoclonal Antibody [Clone ID: OTI4A3]

Product data:

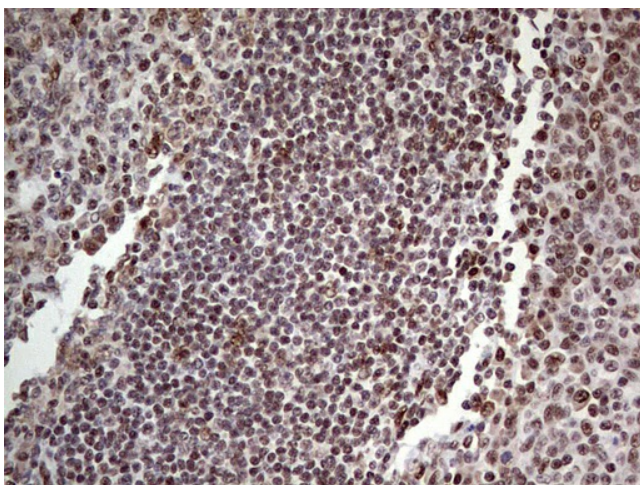
Product Type:	Primary Antibodies
Clone Name:	OTI4A3
Applications:	IHC, WB
Recommended Dilution:	WB 1:2000, IHC 1:150
Reactivity:	Human
Host:	Mouse
Isotype:	IgG1
Clonality:	Monoclonal
Immunogen:	Full length human recombinant protein of human C14orf166 (NP_057123) produced in E.coli.
Formulation:	Lyophilized powder (original buffer 1X PBS, pH 7.3, 8% trehalose)
Reconstitution Method:	For reconstitution, we recommend adding 100uL distilled water to a final antibody concentration of about 1 mg/mL. To use this carrier-free antibody for conjugation experiment, we strongly recommend performing another round of desalting process. (OriGene recommends Zeba Spin Desalting Columns, 7KMWCO from Thermo Scientific)
Purification:	Purified from mouse ascites fluids or tissue culture supernatant by affinity chromatography (protein A/G)
Conjugation:	Unconjugated
Storage:	Store at -20°C as received.
Stability:	Stable for 12 months from date of receipt.
Predicted Protein Size:	27.9 kDa
Gene Name:	RNA transcription, translation and transport factor
Database Link:	NP_057123 Entrez Gene 51637 Human Q9Y224
Synonyms:	CGI-99; CGI99; CLE; CLE7; hCLE1; LCRP369; RLLM1



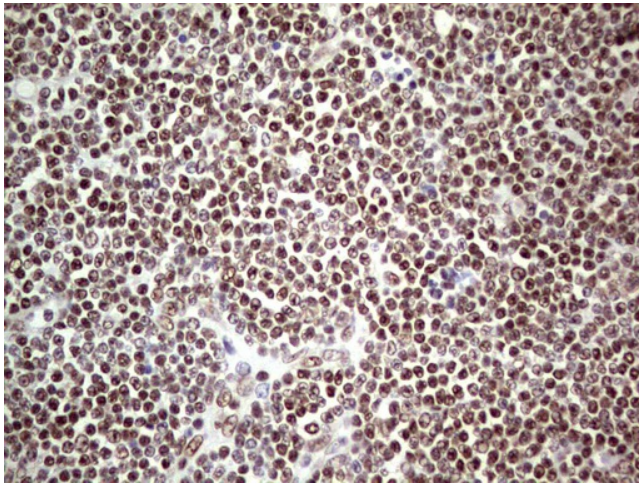
[View online »](#)

Product images:

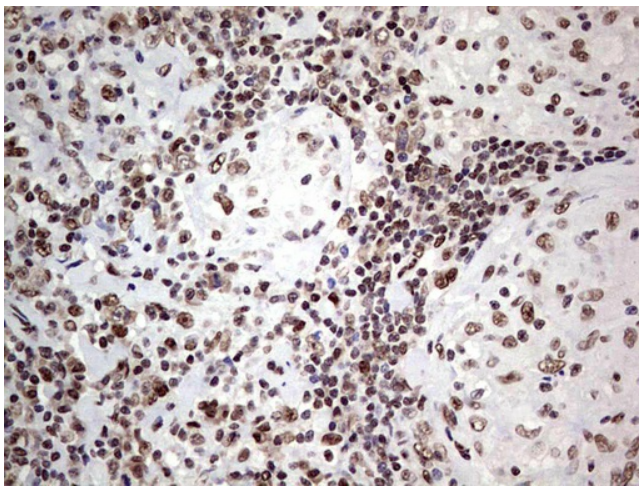
HEK293T cells were transfected with the pCMV6-ENTRY control (Left lane) or pCMV6-ENTRY C14orf166 [RC200016], Right lane) cDNA for 48 hrs and lysed. Equivalent amounts of cell lysates (5 ug per lane) were separated by SDS-PAGE and immunoblotted with anti-C14orf166. Positive lysates [LY414235] (100ug) and [LC414235] (20ug) can be purchased separately from OriGene.



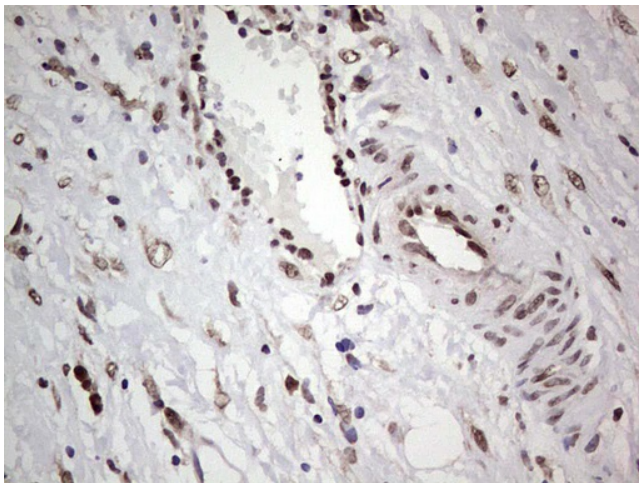
Immunohistochemical staining of paraffin-embedded Human tonsil within the normal limits using anti-C14orf166 mouse monoclonal antibody. (Heat-induced epitope retrieval by 1mM EDTA in 10mM Tris, pH8.5, 120°C for 3min, [TA804055])



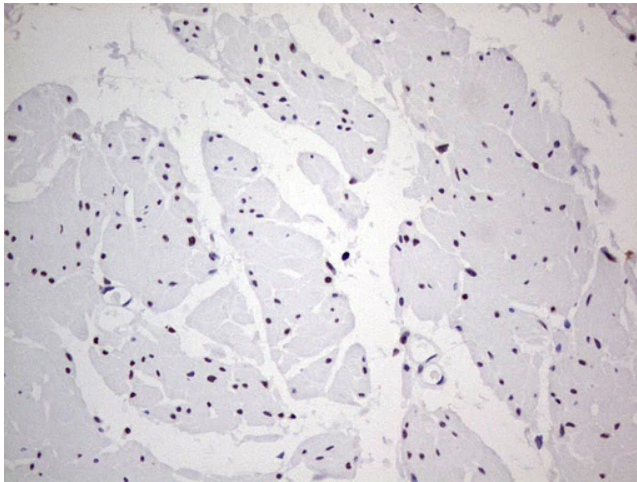
Immunohistochemical staining of paraffin-embedded Human lymphoma tissue using anti-C14orf166 mouse monoclonal antibody. (Heat-induced epitope retrieval by 1mM EDTA in 10mM Tris, pH8.5, 120°C for 3min, [TA804055])



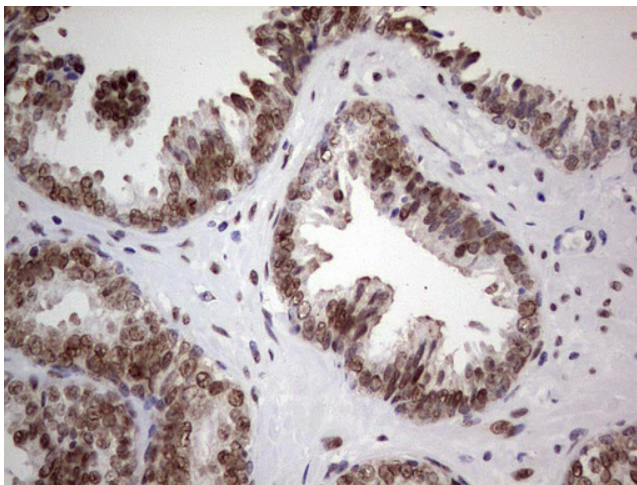
Immunohistochemical staining of paraffin-embedded Human lymph node tissue within the normal limits using anti-C14orf166 mouse monoclonal antibody. (Heat-induced epitope retrieval by 1mM EDTA in 10mM Tris, pH8.5, 120°C for 3min, [TA804055])



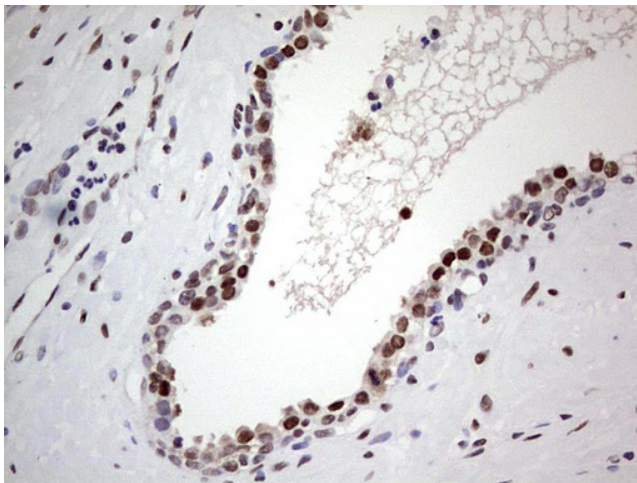
Immunohistochemical staining of paraffin-embedded Carcinoma of Human bladder tissue using anti-C14orf166 mouse monoclonal antibody. (Heat-induced epitope retrieval by 1mM EDTA in 10mM Tris, pH8.5, 120°C for 3min, [TA804055])



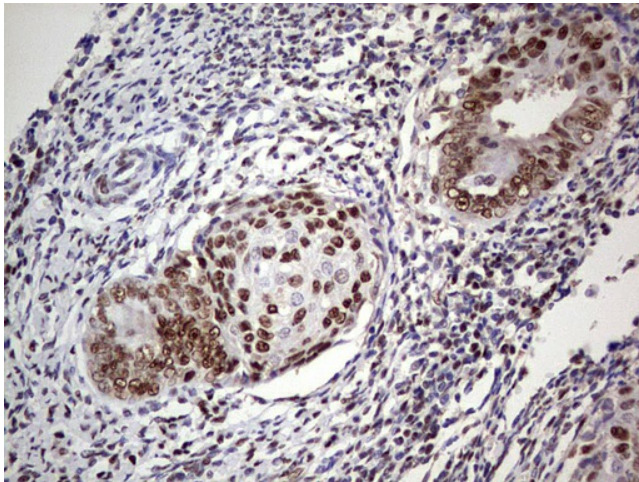
Immunohistochemical staining of paraffin-embedded Human bladder tissue within the normal limits using anti-C14orf166 mouse monoclonal antibody. (Heat-induced epitope retrieval by 1mM EDTA in 10mM Tris, pH8.5, 120°C for 3min, [TA804055])



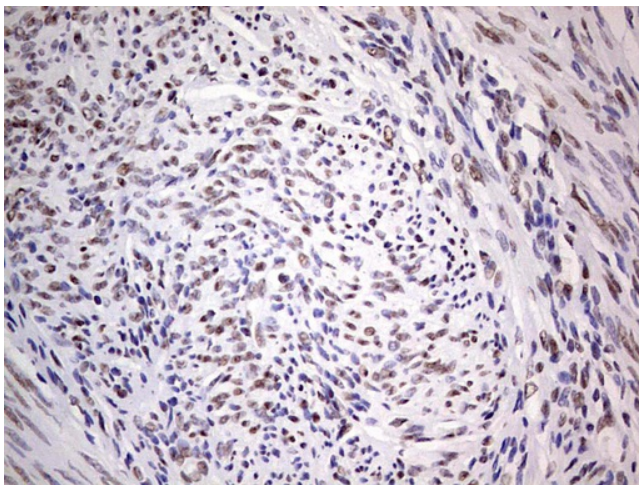
Immunohistochemical staining of paraffin-embedded Carcinoma of Human prostate tissue using anti-C14orf166 mouse monoclonal antibody. (Heat-induced epitope retrieval by 1mM EDTA in 10mM Tris, pH8.5, 120°C for 3min, [TA804055])



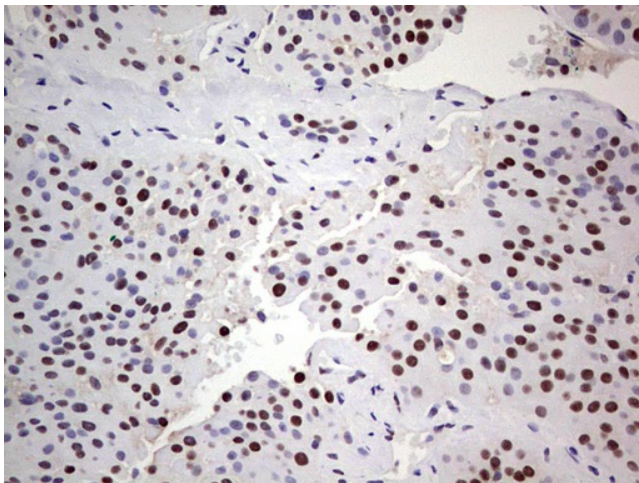
Immunohistochemical staining of paraffin-embedded Human prostate tissue within the normal limits using anti-C14orf166 mouse monoclonal antibody. (Heat-induced epitope retrieval by 1mM EDTA in 10mM Tris, pH8.5, 120°C for 3min, [TA804055])



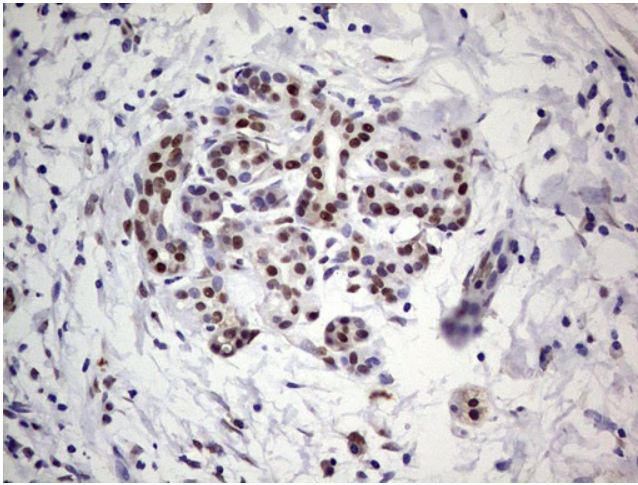
Immunohistochemical staining of paraffin-embedded Adenocarcinoma of Human endometrium tissue using anti-C14orf166 mouse monoclonal antibody. (Heat-induced epitope retrieval by 1mM EDTA in 10mM Tris, pH8.5, 120°C for 3min, [TA804055])



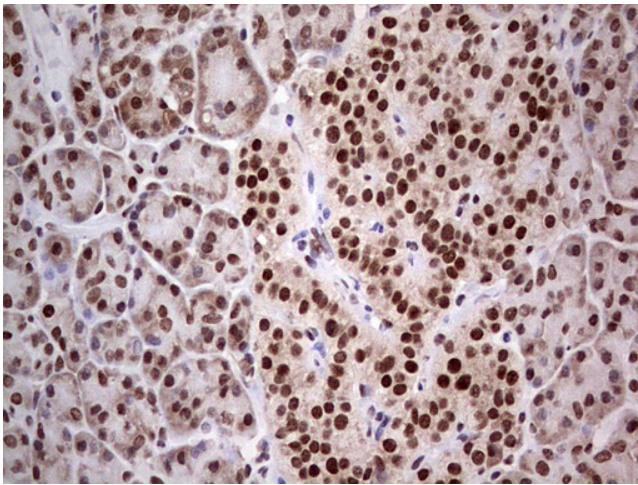
Immunohistochemical staining of paraffin-embedded Human endometrium tissue within the normal limits using anti-C14orf166 mouse monoclonal antibody. (Heat-induced epitope retrieval by 1mM EDTA in 10mM Tris, pH8.5, 120°C for 3min, [TA804055])



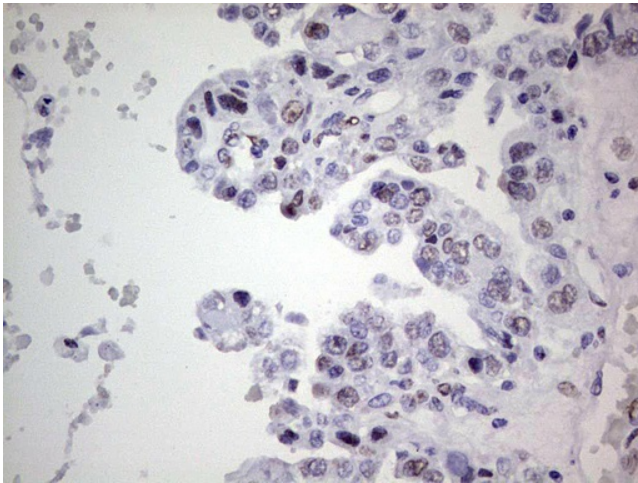
Immunohistochemical staining of paraffin-embedded Carcinoma of Human thyroid tissue using anti-C14orf166 mouse monoclonal antibody. (Heat-induced epitope retrieval by 1mM EDTA in 10mM Tris, pH8.5, 120°C for 3min, [TA804055])



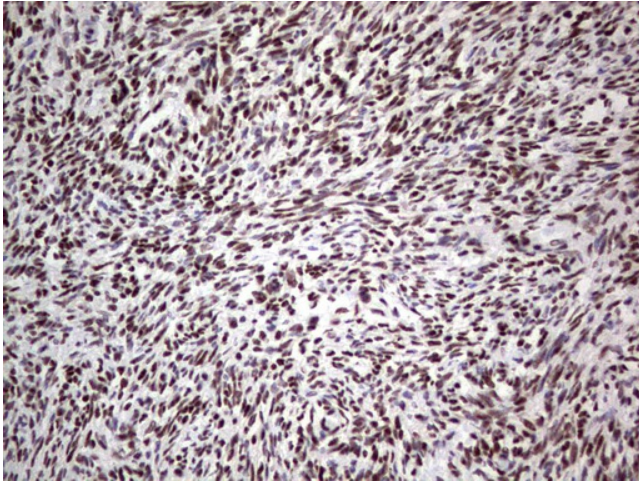
Immunohistochemical staining of paraffin-embedded Carcinoma of Human pancreas tissue using anti-C14orf166 mouse monoclonal antibody. (Heat-induced epitope retrieval by 1mM EDTA in 10mM Tris, pH8.5, 120°C for 3min, [TA804055])



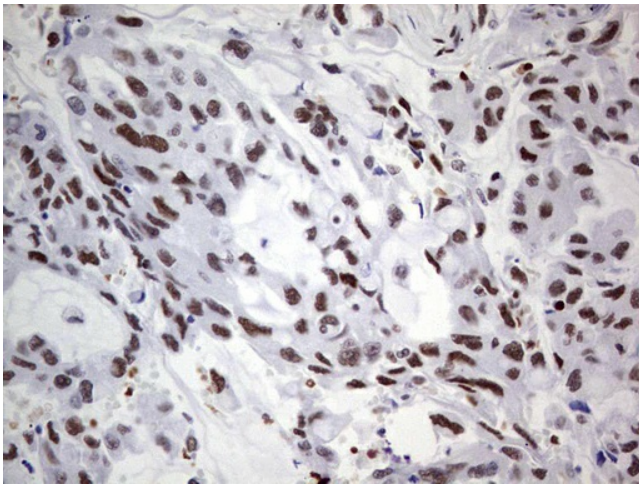
Immunohistochemical staining of paraffin-embedded Human pancreas tissue within the normal limits using anti-C14orf166 mouse monoclonal antibody. (Heat-induced epitope retrieval by 1mM EDTA in 10mM Tris, pH8.5, 120°C for 3min, [TA804055])



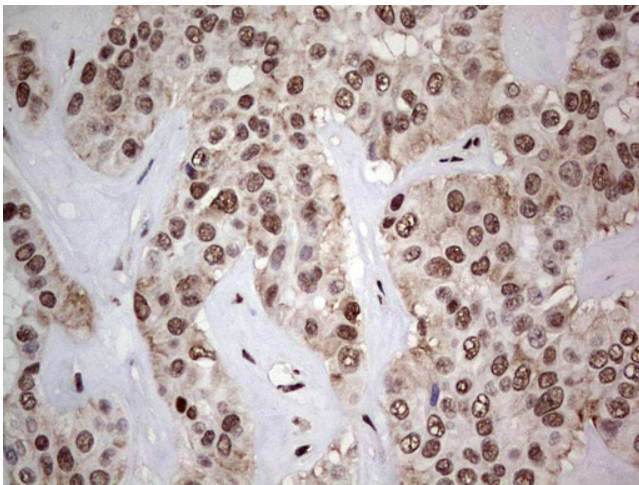
Immunohistochemical staining of paraffin-embedded Adenocarcinoma of Human ovary tissue using anti-C14orf166 mouse monoclonal antibody. (Heat-induced epitope retrieval by 1mM EDTA in 10mM Tris, pH8.5, 120°C for 3min, [TA804055])



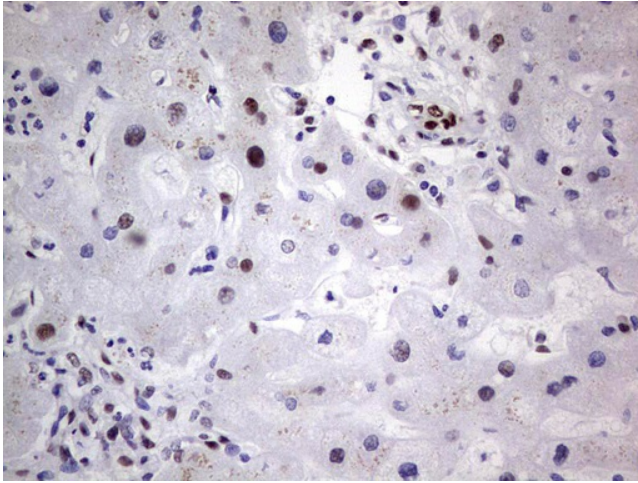
Immunohistochemical staining of paraffin-embedded Human Ovary tissue within the normal limits using anti-C14orf166 mouse monoclonal antibody. (Heat-induced epitope retrieval by 1mM EDTA in 10mM Tris, pH8.5, 120°C for 3min, [TA804055])



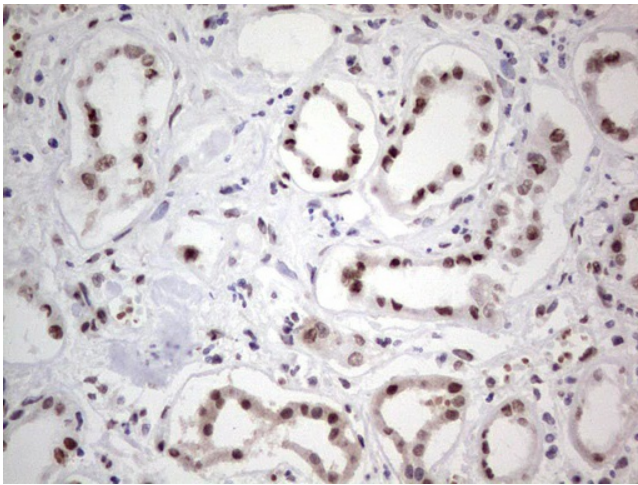
Immunohistochemical staining of paraffin-embedded Carcinoma of Human lung tissue using anti-C14orf166 mouse monoclonal antibody. (Heat-induced epitope retrieval by 1mM EDTA in 10mM Tris, pH8.5, 120°C for 3min, [TA804055])



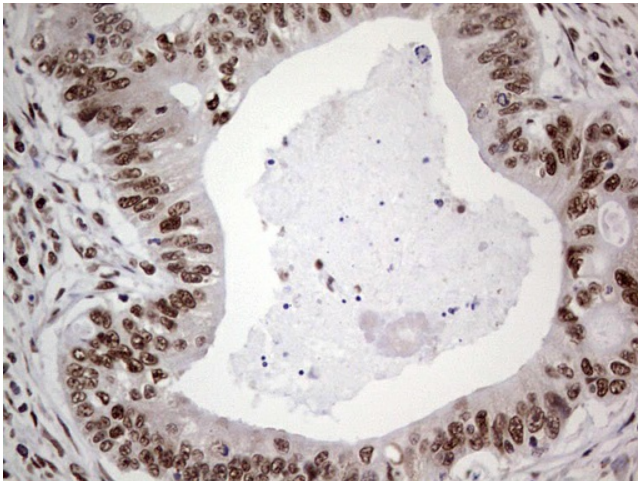
Immunohistochemical staining of paraffin-embedded Carcinoma of Human liver tissue using anti-C14orf166 mouse monoclonal antibody. (Heat-induced epitope retrieval by 1mM EDTA in 10mM Tris, pH8.5, 120°C for 3min, [TA804055])



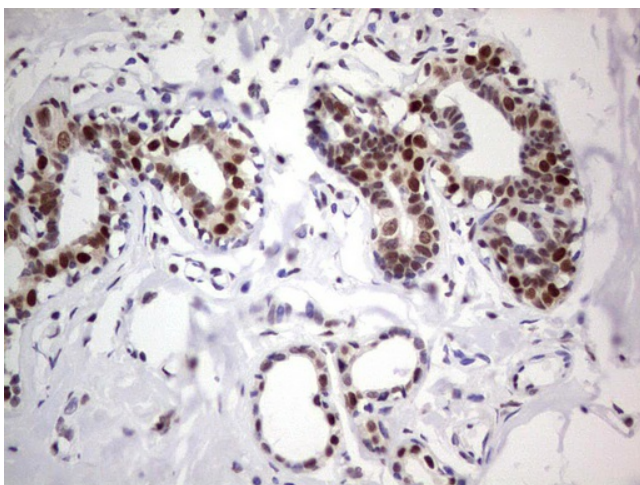
Immunohistochemical staining of paraffin-embedded Human liver tissue within the normal limits using anti-C14orf166 mouse monoclonal antibody. (Heat-induced epitope retrieval by 1mM EDTA in 10mM Tris, pH8.5, 120°C for 3min, [TA804055])



Immunohistochemical staining of paraffin-embedded Human Kidney tissue within the normal limits using anti-C14orf166 mouse monoclonal antibody. (Heat-induced epitope retrieval by 1mM EDTA in 10mM Tris, pH8.5, 120°C for 3min, [TA804055])



Immunohistochemical staining of paraffin-embedded Adenocarcinoma of Human colon tissue using anti-C14orf166 mouse monoclonal antibody. (Heat-induced epitope retrieval by 1mM EDTA in 10mM Tris, pH8.5, 120°C for 3min, [TA804055])



Immunohistochemical staining of paraffin-embedded Adenocarcinoma of Human breast tissue using anti-C14orf166 mouse monoclonal antibody. (Heat-induced epitope retrieval by 1mM EDTA in 10mM Tris, pH8.5, 120°C for 3min, [TA804055])