

## Product datasheet for **CF803618**

### DDOST Mouse Monoclonal Antibody [Clone ID: OTI2H2]

#### Product data:

Product Type:	Primary Antibodies
Clone Name:	OTI2H2
Applications:	IHC, WB
Recommended Dilution:	WB 1:500, IHC 1:150
Reactivity:	Human, Mouse, Rat
Host:	Mouse
Isotype:	IgG1
Clonality:	Monoclonal
Immunogen:	Human recombinant protein fragment corresponding to amino acids 131-378 of human DDOST (NP_005207) produced in E.coli.
Formulation:	Lyophilized powder (original buffer 1X PBS, pH 7.3, 8% trehalose)
Reconstitution Method:	For reconstitution, we recommend adding 100uL distilled water to a final antibody concentration of about 1 mg/mL. To use this carrier-free antibody for conjugation experiment, we strongly recommend performing another round of desalting process. (OriGene recommends Zeba Spin Desalting Columns, 7KMWCO from Thermo Scientific)
Purification:	Purified from mouse ascites fluids or tissue culture supernatant by affinity chromatography (protein A/G)
Conjugation:	Unconjugated
Storage:	Store at -20°C as received.
Stability:	Stable for 12 months from date of receipt.
Predicted Protein Size:	46.1 kDa
Gene Name:	dolichyl-diphosphooligosaccharide--protein glycosyltransferase non-catalytic subunit
Database Link:	<a href="#">NP_005207</a> <a href="#">Entrez Gene 13200 Mouse</a> <a href="#">Entrez Gene 313648 Rat</a> <a href="#">Entrez Gene 1650 Human</a> <a href="#">P39656</a>



[View online »](#)

**Background:**

This gene encodes a component of the oligosaccharyltransferase complex which catalyzes the transfer of high-mannose oligosaccharides to asparagine residues on nascent polypeptides in the lumen of the rough endoplasmic reticulum. The protein complex co-purifies with ribosomes. The product of this gene is also implicated in the processing of advanced glycation endproducts (AGEs), which form from non-enzymatic reactions between sugars and proteins or lipids and are associated with aging and hyperglycemia. [provided by RefSeq, Jul 2008]

**Synonyms:**

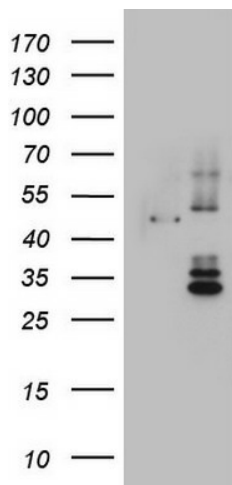
AGER1; CDG1R; OKSWcl45; OST; OST48; WBP1

**Protein Families:**

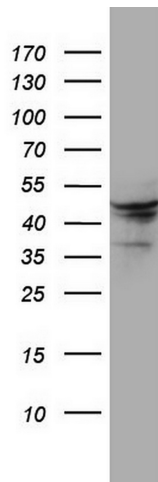
Transmembrane

**Protein Pathways:**

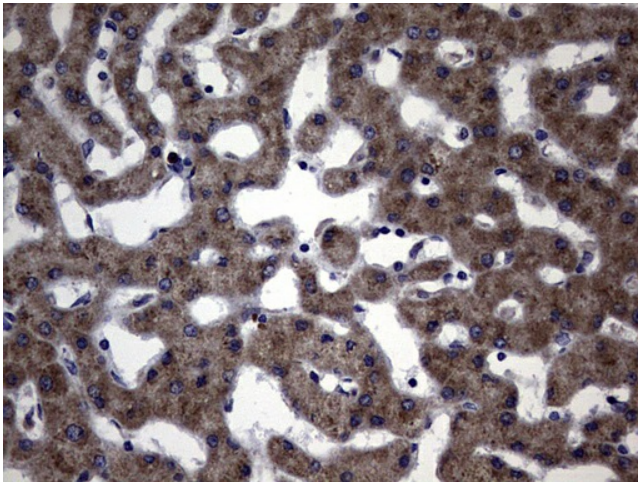
Metabolic pathways, N-Glycan biosynthesis

**Product images:**


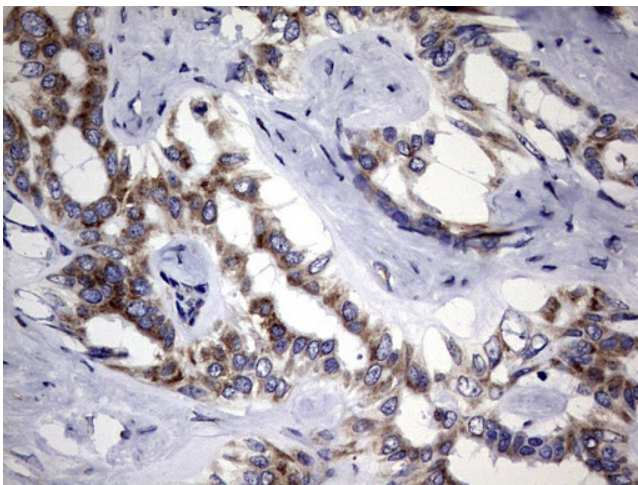
HEK293T cells were transfected with the pCMV6-ENTRY control (Left lane) or pCMV6-ENTRY DDOST ([RC200672], Right lane) cDNA for 48 hrs and lysed. Equivalent amounts of cell lysates (5 ug per lane) were separated by SDS-PAGE and immunoblotted with anti-DDOST. Positive lysates [LY417440] (100ug) and [LC417440] (20ug) can be purchased separately from OriGene.



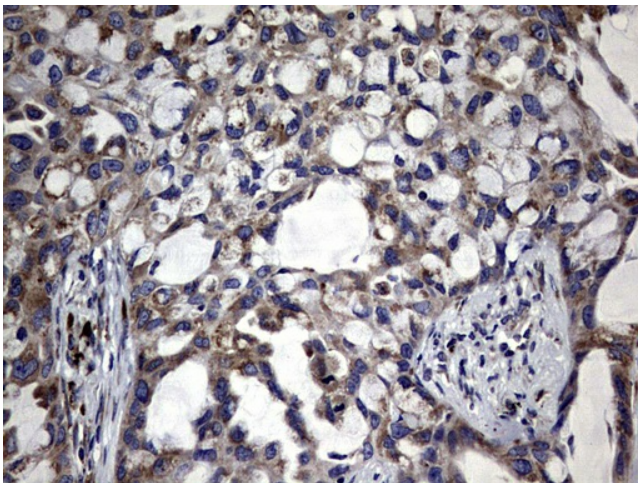
Western blot analysis of A549 cell lysate (35ug) by using anti-DDOST monoclonal antibody. Dilution: 1:500



Immunohistochemical staining of paraffin-embedded Human liver tissue within the normal limits using anti-DDOST mouse monoclonal antibody. (Heat-induced epitope retrieval by 1mM EDTA in 10mM Tris, pH9.0, 120°C for 3min, [TA803618])

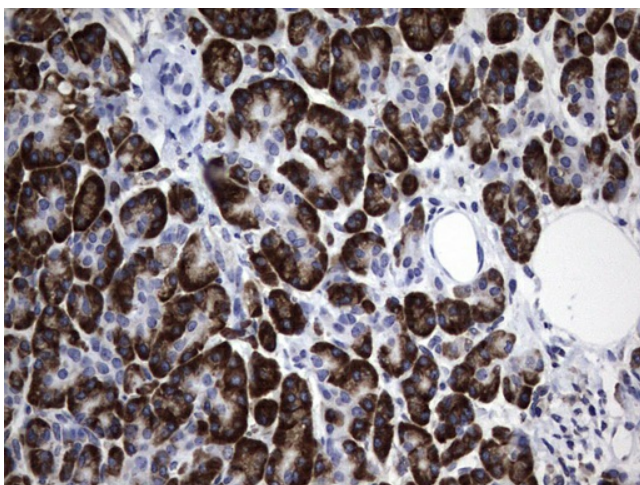


Immunohistochemical staining of paraffin-embedded Carcinoma of Human liver tissue using anti-DDOST mouse monoclonal antibody. (Heat-induced epitope retrieval by 1mM EDTA in 10mM Tris, pH9.0, 120°C for 3min, [TA803618])

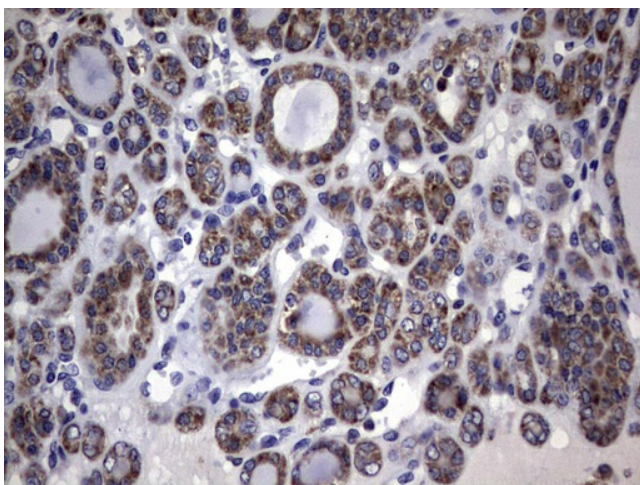


Immunohistochemical staining of paraffin-embedded Carcinoma of Human lung tissue using anti-DDOST mouse monoclonal antibody. (Heat-induced epitope retrieval by 1mM EDTA in 10mM Tris, pH9.0, 120°C for 3min, [TA803618])





Immunohistochemical staining of paraffin-embedded Human pancreas tissue within the normal limits using anti-DDOST mouse monoclonal antibody. (Heat-induced epitope retrieval by 1mM EDTA in 10mM Tris, pH9.0, 120°C for 3min, [TA803618])



Immunohistochemical staining of paraffin-embedded Carcinoma of Human thyroid tissue using anti-DDOST mouse monoclonal antibody. (Heat-induced epitope retrieval by 1mM EDTA in 10mM Tris, pH9.0, 120°C for 3min, [TA803618])