

## Product datasheet for **CF802295**

### **AREB6 (ZEB1) Mouse Monoclonal Antibody [Clone ID: OTI8E2]**

#### **Product data:**

<b>Product Type:</b>	Primary Antibodies
<b>Clone Name:</b>	OTI8E2
<b>Applications:</b>	IHC, WB
<b>Recommended Dilution:</b>	WB 1:200 - 1:1000, IHC 1:150
<b>Reactivity:</b>	Human, Mouse, Rat
<b>Host:</b>	Mouse
<b>Isotype:</b>	IgG2a
<b>Clonality:</b>	Monoclonal
<b>Immunogen:</b>	Human recombinant protein fragment corresponding to amino acids 1-350 of human ZEB1 (NP_110378) produced in E.coli.
<b>Formulation:</b>	Lyophilized powder (original buffer 1X PBS, pH 7.3, 8% trehalose)
<b>Reconstitution Method:</b>	For reconstitution, we recommend adding 100uL distilled water to a final antibody concentration of about 1 mg/mL. To use this carrier-free antibody for conjugation experiment, we strongly recommend performing another round of desalting process. (OriGene recommends Zeba Spin Desalting Columns, 7KMWCO from Thermo Scientific)
<b>Purification:</b>	Purified from mouse ascites fluids or tissue culture supernatant by affinity chromatography (protein A/G)
<b>Conjugation:</b>	Unconjugated
<b>Storage:</b>	Store at -20°C as received.
<b>Stability:</b>	Stable for 12 months from date of receipt.
<b>Gene Name:</b>	zinc finger E-box binding homeobox 1
<b>Database Link:</b>	<a href="#">NP_110378</a> <a href="#">Entrez Gene 21417 Mouse</a> <a href="#">Entrez Gene 25705 Rat</a> <a href="#">Entrez Gene 6935 Human</a> <a href="#">P37275</a>



[View online »](#)

**Background:**

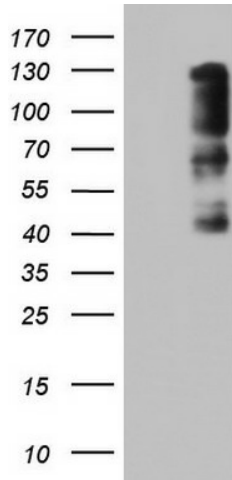
This gene encodes a zinc finger transcription factor. The encoded protein likely plays a role in transcriptional repression of interleukin 2. Mutations in this gene have been associated with posterior polymorphous corneal dystrophy-3 and late-onset Fuchs endothelial corneal dystrophy. Alternatively spliced transcript variants encoding different isoforms have been described. [provided by RefSeq, Mar 2010]

**Synonyms:**

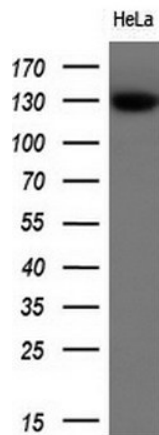
AREB6; BZP; DELTAEF1; FECD6; NIL2A; PPCD3; TCF8; ZFHEP; ZFH1A

**Protein Families:**

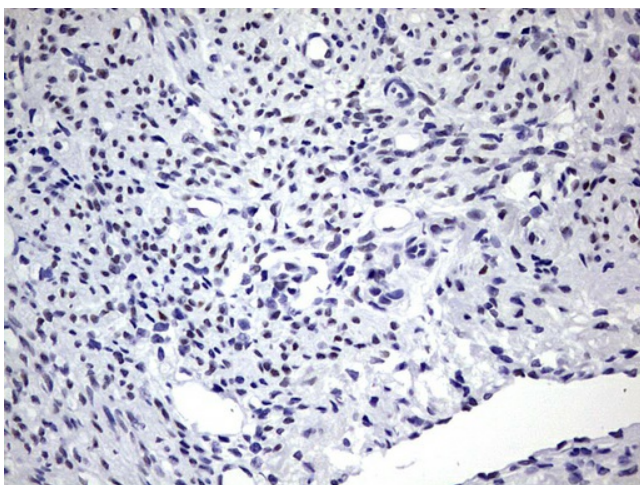
Transcription Factors

**Product images:**


HEK293T cells were transfected with the pCMV6-ENTRY control (Left lane) or pCMV6-ENTRY ZEB1 ([RC217704], Right lane) cDNA for 48 hrs and lysed. Equivalent amounts of cell lysates (5 ug per lane) were separated by SDS-PAGE and immunoblotted with anti-ZEB1. Positive lysates [LY403073] (100ug) and [LC403073] (20ug) can be purchased separately from OriGene.



Western blot analysis of extracts (10ug) from 1 cell line by using anti-ZEB1 monoclonal antibody at 1:200.



Immunohistochemical staining of paraffin-embedded Human endometrium tissue within the normal limits using anti-ZEB1 mouse monoclonal antibody. (Heat-induced epitope retrieval by 1mM EDTA in 10mM Tris, pH8.5, 120°C for 3min, [TA802295])