

Product datasheet for **CF801891**

PIK3CD Mouse Monoclonal Antibody [Clone ID: OTI2H3]

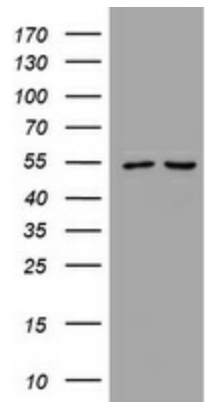
Product data:

Product Type:	Primary Antibodies
Clone Name:	OTI2H3
Applications:	IHC, WB
Recommended Dilution:	WB 1:500, IHC 1:150
Reactivity:	Human, Mouse, Rat
Host:	Mouse
Isotype:	IgG2a
Clonality:	Monoclonal
Immunogen:	Human recombinant protein fragment corresponding to amino acids 286-610 of human PIK3CD (NP_005017) produced in E.coli.
Formulation:	Lyophilized powder (original buffer 1X PBS, pH 7.3, 8% trehalose)
Reconstitution Method:	For reconstitution, we recommend adding 100uL distilled water to a final antibody concentration of about 1 mg/mL. To use this carrier-free antibody for conjugation experiment, we strongly recommend performing another round of desalting process. (OriGene recommends Zeba Spin Desalting Columns, 7KMWCO from Thermo Scientific)
Purification:	Purified from mouse ascites fluids or tissue culture supernatant by affinity chromatography (protein A/G)
Conjugation:	Unconjugated
Storage:	Store at -20°C as received.
Stability:	Stable for 12 months from date of receipt.
Predicted Protein Size:	119.3 kDa
Gene Name:	phosphatidylinositol-4,5-bisphosphate 3-kinase catalytic subunit delta
Database Link:	NP_005017 Entrez Gene 18707 Mouse Entrez Gene 366508 Rat Entrez Gene 5293 Human O00329

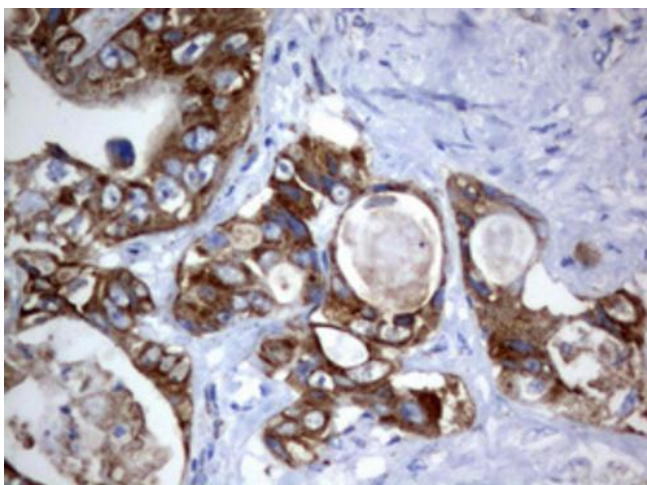


[View online »](#)

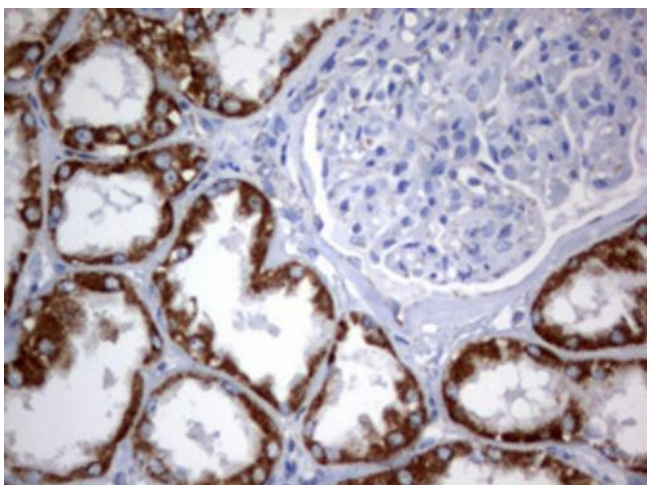
Background:	Phosphoinositide 3-kinases (PI3Ks) phosphorylate inositol lipids and are involved in the immune response. The protein encoded by this gene is a class I PI3K found primarily in leukocytes. Like other class I PI3Ks (p110-alpha p110-beta, and p110-gamma), the encoded protein binds p85 adapter proteins and GTP-bound RAS. However, unlike the other class I PI3Ks, this protein phosphorylates itself, not p85 protein. [provided by RefSeq, Jul
Synonyms:	APDS; IMD14; IMD14A; IMD14B; p110D; P110DELTA; PI3K; ROCHIS
Protein Families:	Druggable Genome
Protein Pathways:	Acute myeloid leukemia, Apoptosis, B cell receptor signaling pathway, Chemokine signaling pathway, Chronic myeloid leukemia, Colorectal cancer, Endometrial cancer, ErbB signaling pathway, Fc epsilon RI signaling pathway, Fc gamma R-mediated phagocytosis, Focal adhesion, Glioma, Inositol phosphate metabolism, Insulin signaling pathway, Jak-STAT signaling pathway, Leukocyte transendothelial migration, Melanoma, mTOR signaling pathway, Natural killer cell mediated cytotoxicity, Neurotrophin signaling pathway, Non-small cell lung cancer, Pancreatic cancer, Pathways in cancer, Phosphatidylinositol signaling system, Progesterone-mediated oocyte maturation, Prostate cancer, Regulation of actin cytoskeleton, Renal cell carcinoma, Small cell lung cancer, T cell receptor signaling pathway, Toll-like receptor signaling pathway, Type II diabetes mellitus, VEGF signaling pathway

Product images:

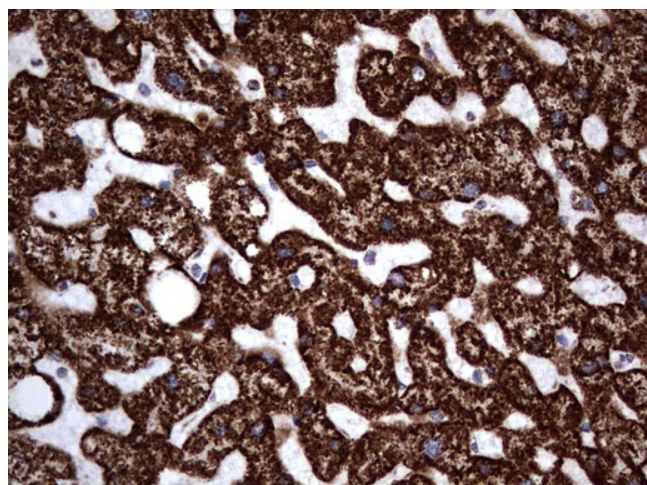
E.coli lysate (left lane) and E.coli lysate expressing Human recombinant protein fragment (right lane) corresponding to amino acids 286-610 of human PIK3CD (NP_005017).



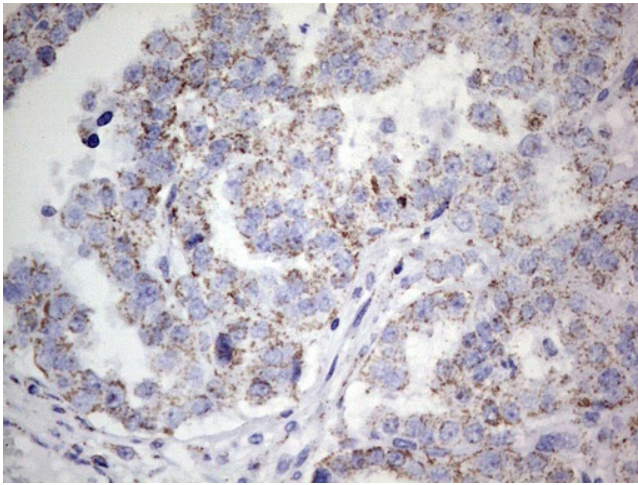
Immunohistochemical staining of paraffin-embedded Adenocarcinoma of Human colon tissue using anti-PIK3CD mouse monoclonal antibody. (Heat-induced epitope retrieval by 1mM EDTA in 10mM Tris, pH8.5, 120°C for 3min, [TA801891])



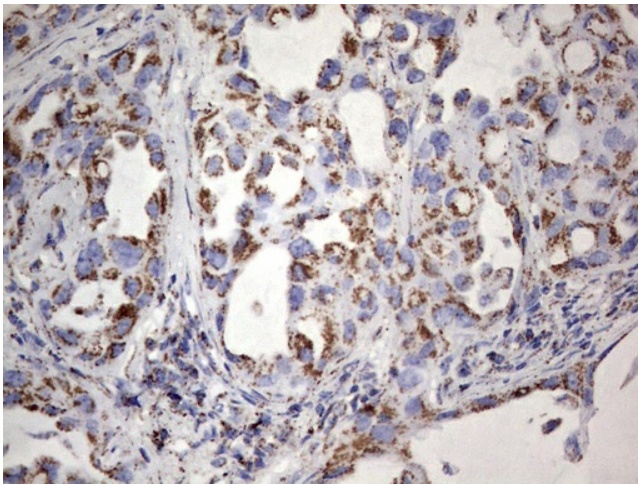
Immunohistochemical staining of paraffin-embedded Human Kidney tissue within the normal limits using anti-PIK3CD mouse monoclonal antibody. (Heat-induced epitope retrieval by 1mM EDTA in 10mM Tris, pH8.5, 120°C for 3min, [TA801891])



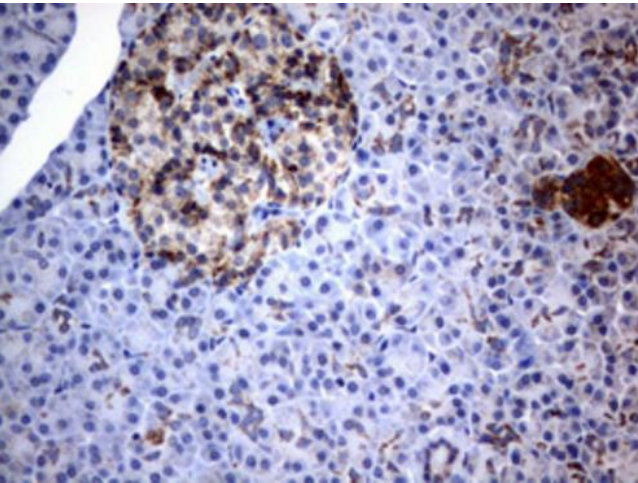
Immunohistochemical staining of paraffin-embedded Human liver tissue within the normal limits using anti-PIK3CD mouse monoclonal antibody. (Heat-induced epitope retrieval by 1mM EDTA in 10mM Tris, pH8.5, 120°C for 3min, [TA801891])



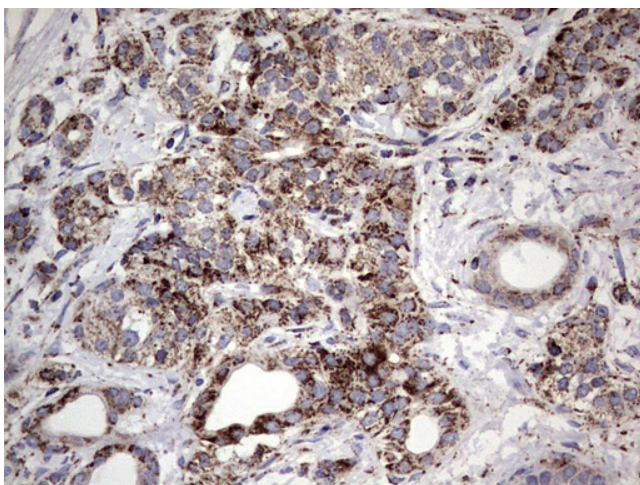
Immunohistochemical staining of paraffin-embedded Carcinoma of Human liver tissue using anti-PIK3CD mouse monoclonal antibody. (Heat-induced epitope retrieval by 1mM EDTA in 10mM Tris, pH8.5, 120°C for 3min, [TA801891])



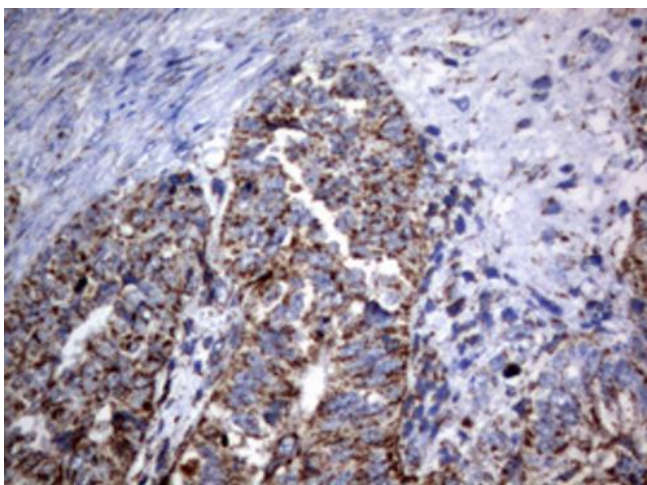
Immunohistochemical staining of paraffin-embedded Carcinoma of Human lung tissue using anti-PIK3CD mouse monoclonal antibody. (Heat-induced epitope retrieval by 1mM EDTA in 10mM Tris, pH8.5, 120°C for 3min, [TA801891])



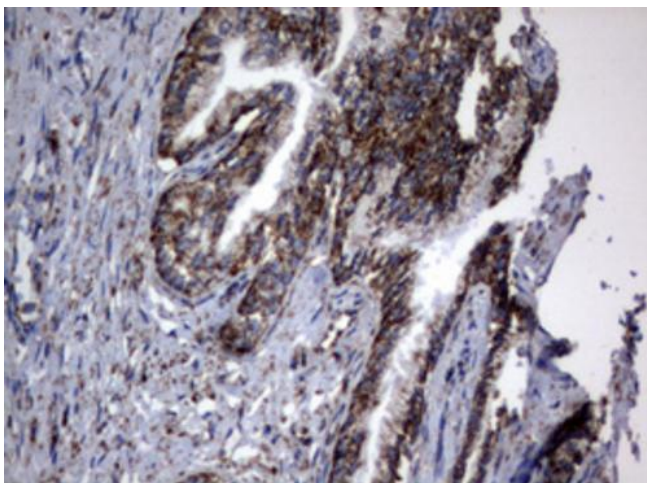
Immunohistochemical staining of paraffin-embedded Human pancreas tissue within the normal limits using anti-PIK3CD mouse monoclonal antibody. (Heat-induced epitope retrieval by 1mM EDTA in 10mM Tris, pH8.5, 120°C for 3min, [TA801891])



Immunohistochemical staining of paraffin-embedded Carcinoma of Human pancreas tissue using anti-PIK3CD mouse monoclonal antibody. (Heat-induced epitope retrieval by 1mM EDTA in 10mM Tris, pH8.5, 120°C for 3min, [TA801891])



Immunohistochemical staining of paraffin-embedded Adenocarcinoma of Human endometrium tissue using anti-PIK3CD mouse monoclonal antibody. (Heat-induced epitope retrieval by 1mM EDTA in 10mM Tris, pH8.5, 120°C for 3min, [TA801891])



Immunohistochemical staining of paraffin-embedded Carcinoma of Human prostate tissue using anti-PIK3CD mouse monoclonal antibody. (Heat-induced epitope retrieval by 1mM EDTA in 10mM Tris, pH8.5, 120°C for 3min, [TA801891])