

## Product datasheet for **CF801775**

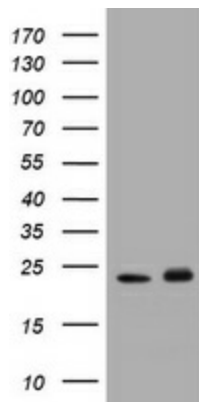
### **GST3 (GSTP1) Mouse Monoclonal Antibody [Clone ID: OTI4B6]**

#### **Product data:**

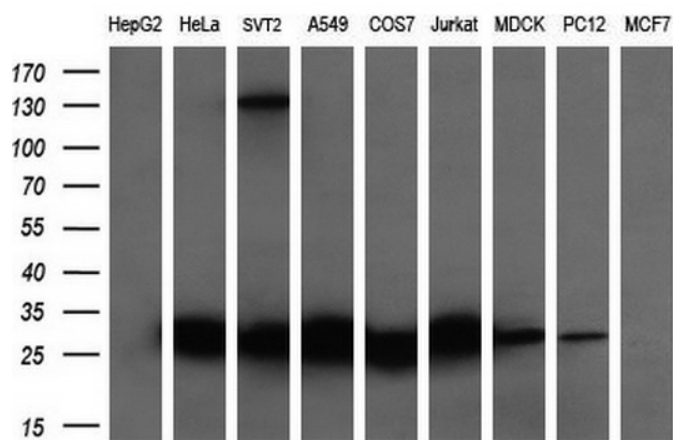
<b>Product Type:</b>	Primary Antibodies
<b>Clone Name:</b>	OTI4B6
<b>Applications:</b>	IHC, WB
<b>Recommended Dilution:</b>	WB 1:2000, IHC 1:150
<b>Reactivity:</b>	Human, Mouse, Rat
<b>Host:</b>	Mouse
<b>Isotype:</b>	IgG2b
<b>Clonality:</b>	Monoclonal
<b>Immunogen:</b>	Full length human recombinant protein of human GSTP1 (NP_000843) produced in E.coli.
<b>Formulation:</b>	Lyophilized powder (original buffer 1X PBS, pH 7.3, 8% trehalose)
<b>Reconstitution Method:</b>	For reconstitution, we recommend adding 100uL distilled water to a final antibody concentration of about 1 mg/mL. To use this carrier-free antibody for conjugation experiment, we strongly recommend performing another round of desalting process. (OriGene recommends Zeba Spin Desalting Columns, 7KMWCO from Thermo Scientific)
<b>Purification:</b>	Purified from mouse ascites fluids or tissue culture supernatant by affinity chromatography (protein A/G)
<b>Conjugation:</b>	Unconjugated
<b>Storage:</b>	Store at -20°C as received.
<b>Stability:</b>	Stable for 12 months from date of receipt.
<b>Gene Name:</b>	glutathione S-transferase pi 1
<b>Database Link:</b>	<a href="#">NP_000843</a> <a href="#">Entrez Gene 14870 Mouse</a> <a href="#">Entrez Gene 24426 Rat</a> <a href="#">Entrez Gene 2950 Human</a> <a href="#">P09211</a>
<b>Synonyms:</b>	DFN7; FAES3; GST3; GSTP; HEL-S-22; PI
<b>Protein Families:</b>	Druggable Genome
<b>Protein Pathways:</b>	Drug metabolism - cytochrome P450, Glutathione metabolism, Metabolism of xenobiotics by cytochrome P450, Pathways in cancer, Prostate cancer



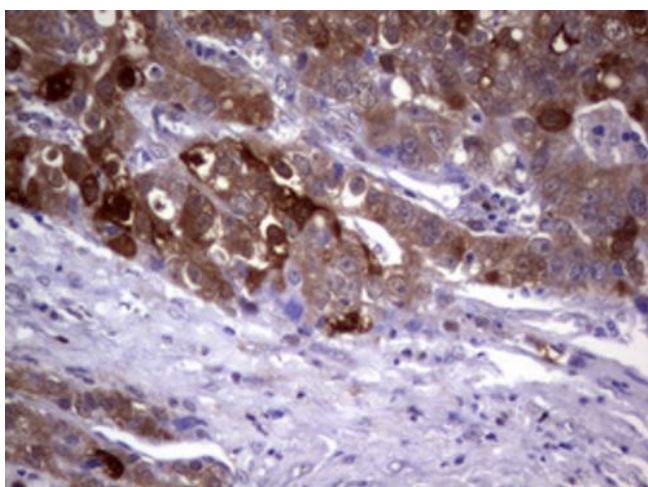
[View online »](#)

**Product images:**


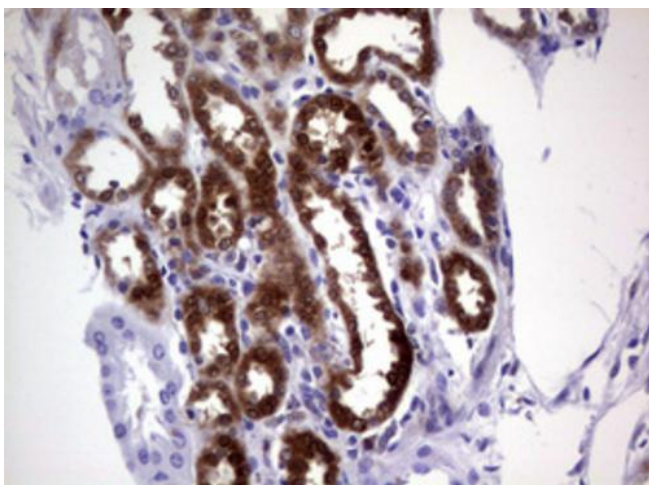
HEK293T cells were transfected with the pCMV6-ENTRY control (Cat# [PS100001], Left lane) or pCMV6-ENTRY GSTP1 (Cat# [RC203086], Right lane) cDNA for 48 hrs and lysed. Equivalent amounts of cell lysates (5 ug per lane) were separated by SDS-PAGE and immunoblotted with anti-GSTP1(Cat# [TA801775]). Positive lysates [LY400300] (100ug) and [LC400300] (20ug) can be purchased separately from OriGene.



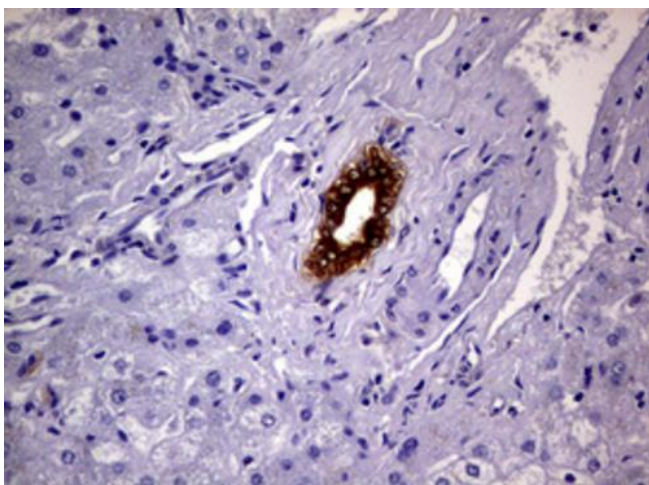
Western blot analysis of extracts (35ug) from 9 different cell lines by using anti-GSTP1 monoclonal antibody (HepG2: human; HeLa: human; SVT2: mouse; A549: human; COS7: rat; Jurkat: human; MDCK: canine; PC12: rat; MCF7: human) (1:200).



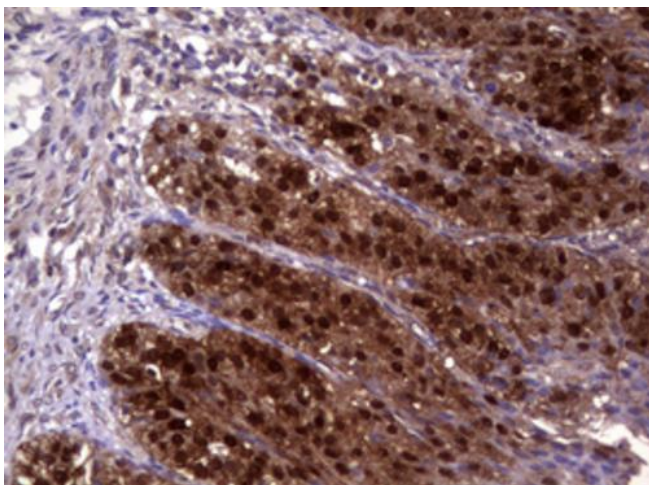
Immunohistochemical staining of paraffin-embedded Adenocarcinoma of Human colon tissue using anti-GSTP1 mouse monoclonal antibody. (Heat-induced epitope retrieval by 10mM citric buffer, pH6.0, 120°C for 3min, [TA801775])



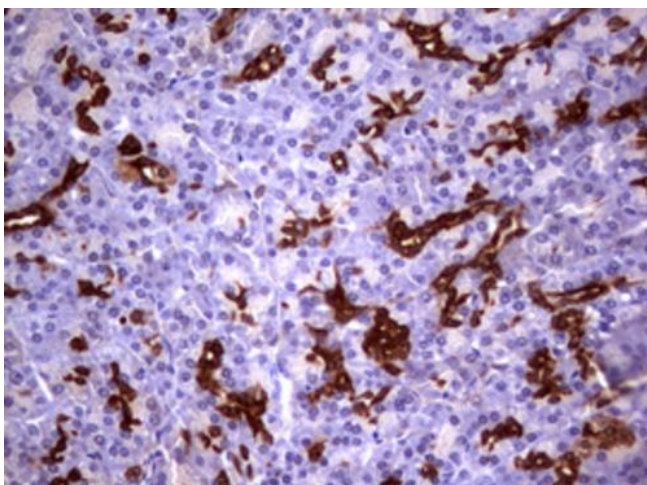
Immunohistochemical staining of paraffin-embedded Human Kidney tissue within the normal limits using anti-GSTP1 mouse monoclonal antibody. (Heat-induced epitope retrieval by 10mM citric buffer, pH6.0, 120°C for 3min, [TA801775])



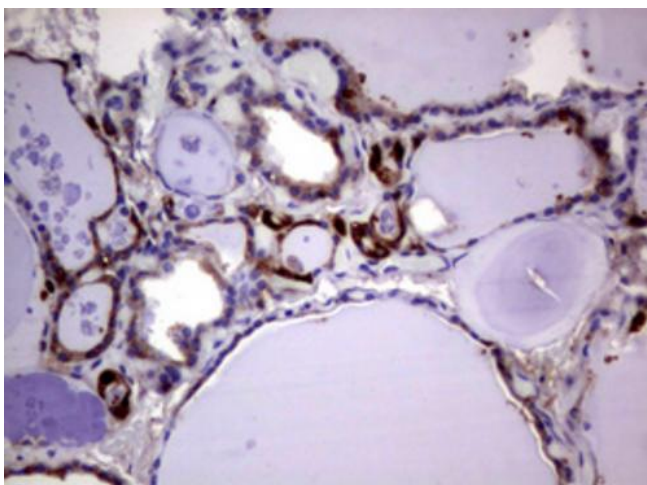
Immunohistochemical staining of paraffin-embedded Human liver tissue within the normal limits using anti-GSTP1 mouse monoclonal antibody. (Heat-induced epitope retrieval by 10mM citric buffer, pH6.0, 120°C for 3min, [TA801775])



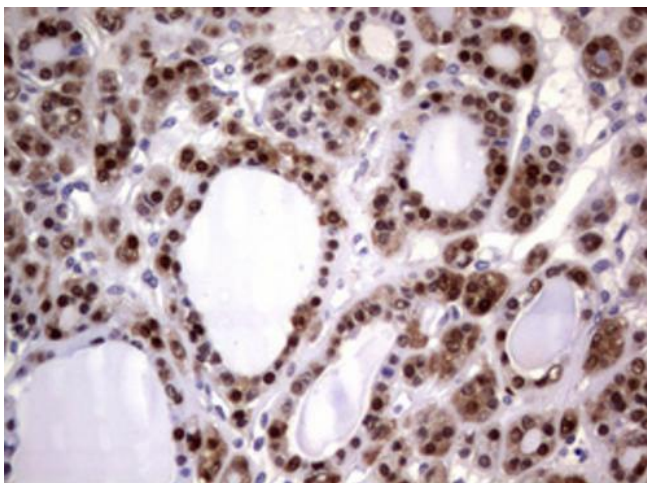
Immunohistochemical staining of paraffin-embedded Adenocarcinoma of Human ovary tissue using anti-GSTP1 mouse monoclonal antibody. (Heat-induced epitope retrieval by 10mM citric buffer, pH6.0, 120°C for 3min, [TA801775])



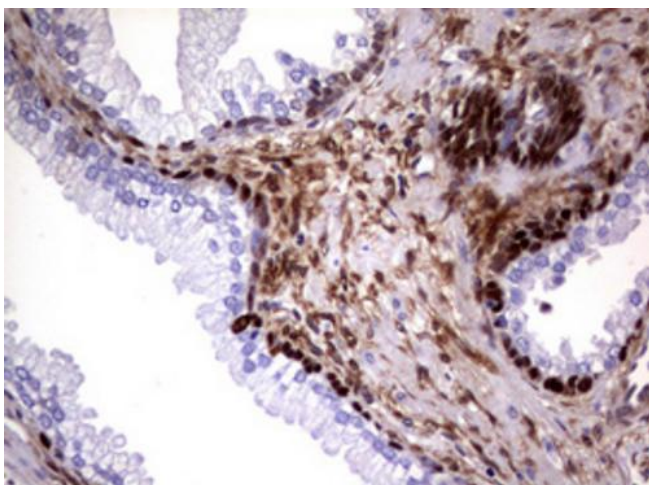
Immunohistochemical staining of paraffin-embedded Human pancreas tissue within the normal limits using anti-GSTP1 mouse monoclonal antibody. (Heat-induced epitope retrieval by 10mM citric buffer, pH6.0, 120°C for 3min, [TA801775])



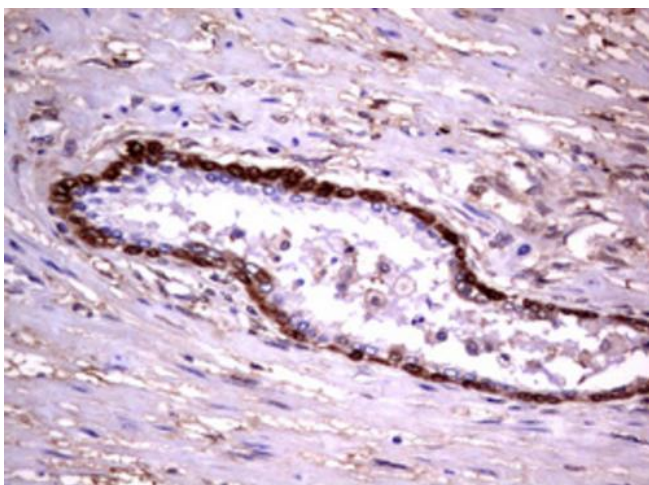
Immunohistochemical staining of paraffin-embedded Human thyroid tissue within the normal limits using anti-GSTP1 mouse monoclonal antibody. (Heat-induced epitope retrieval by 10mM citric buffer, pH6.0, 120°C for 3min, [TA801775])



Immunohistochemical staining of paraffin-embedded Carcinoma of Human thyroid tissue using anti-GSTP1 mouse monoclonal antibody. (Heat-induced epitope retrieval by 10mM citric buffer, pH6.0, 120°C for 3min, [TA801775])



Immunohistochemical staining of paraffin-embedded Human prostate tissue within the normal limits using anti-GSTP1 mouse monoclonal antibody. (Heat-induced epitope retrieval by 10mM citric buffer, pH6.0, 120°C for 3min, [TA801775])



Immunohistochemical staining of paraffin-embedded Carcinoma of Human prostate tissue using anti-GSTP1 mouse monoclonal antibody. (Heat-induced epitope retrieval by 10mM citric buffer, pH6.0, 120°C for 3min, [TA801775])