

Product datasheet for **CF801288**

ALK Mouse Monoclonal Antibody [Clone ID: OTI15B2]

Product data:

Product Type:	Primary Antibodies
Clone Name:	OTI15B2
Applications:	LMNX, WB
Recommended Dilution:	WB 1:2000
Reactivity:	Human, Mouse, Rat
Host:	Mouse
Isotype:	IgG2a
Clonality:	Monoclonal
Immunogen:	Human recombinant protein fragment corresponding to amino acids 1300-1620 of human ALK (NP_004295) produced in E.coli.
Formulation:	Lyophilized powder (original buffer 1X PBS, pH 7.3, 8% trehalose)
Reconstitution Method:	For reconstitution, we recommend adding 100uL distilled water to a final antibody concentration of about 1 mg/mL. To use this carrier-free antibody for conjugation experiment, we strongly recommend performing another round of desalting process. (OriGene recommends Zeba Spin Desalting Columns, 7KMWCO from Thermo Scientific)
Purification:	Purified from mouse ascites fluids or tissue culture supernatant by affinity chromatography (protein A/G)
Conjugation:	Unconjugated
Storage:	Store at -20°C as received.
Stability:	Stable for 12 months from date of receipt.
Predicted Protein Size:	176.3 kDa
Gene Name:	ALK receptor tyrosine kinase
Database Link:	NP_004295 Entrez Gene 11682 Mouse Entrez Gene 266802 Rat Entrez Gene 238 Human Q9UM73



[View online »](#)

Background:

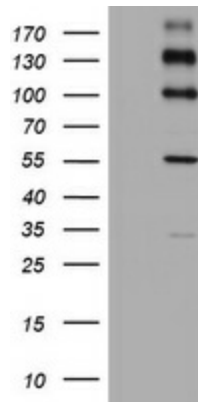
This gene encodes a receptor tyrosine kinase, which belongs to the insulin receptor superfamily. This protein comprises an extracellular domain, an hydrophobic stretch corresponding to a single pass transmembrane region, and an intracellular kinase domain. It plays an important role in the development of the brain and exerts its effects on specific neurons in the nervous system. This gene has been found to be rearranged, mutated, or amplified in a series of tumours including anaplastic large cell lymphomas, neuroblastoma, and non-small cell lung cancer. The chromosomal rearrangements are the most common genetic alterations in this gene, which result in creation of multiple fusion genes in tumourigenesis, including ALK (chromosome 2)/EML4 (chromosome 2), ALK/RANBP2 (chromosome 2), ALK/ATIC (chromosome 2), ALK/TFG (chromosome 3), ALK/NPM1 (chromosome 5), ALK/SQSTM1 (chromosome 5), ALK/KIF5B (chromosome 10), ALK/CLTC (chromosome 17), ALK/TPM4 (chromosome 19), and ALK/MSN (chromosome X). [provided by RefSeq, Jan 2011]

Synonyms:

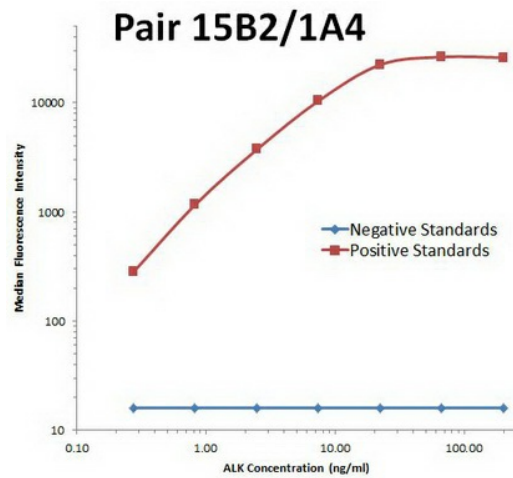
CD246; NBLST3

Protein Families:

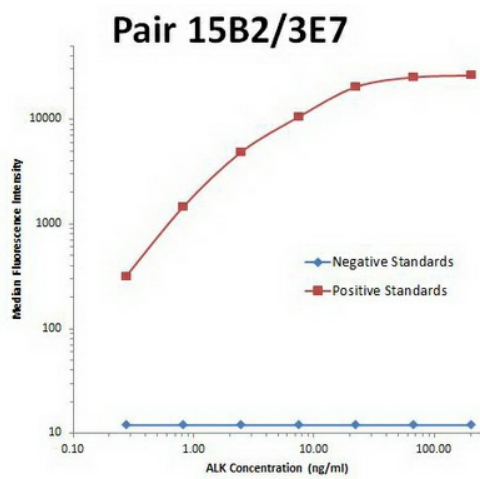
Druggable Genome, Protein Kinase

Product images:

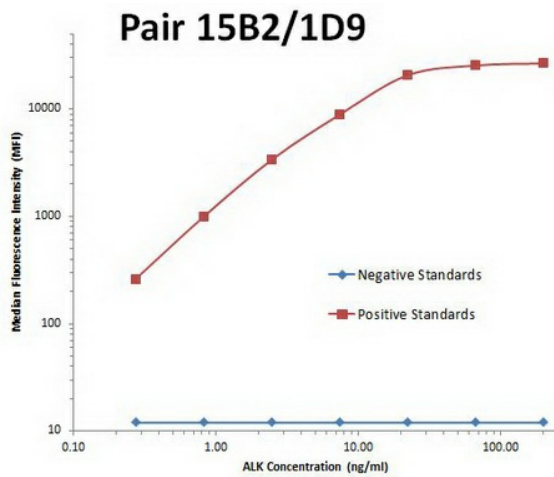
HEK293T cells were transfected with the pCMV6-ENTRY control (Left lane) or pCMV6-ENTRY ALK ([RC222485], Right lane) cDNA for 48 hrs and lysed. Equivalent amounts of cell lysates (5 ug per lane) were separated by SDS-PAGE and immunoblotted with anti-ALK. Positive lysates [LY418072] (100ug) and [LC418072] (20ug) can be purchased separately from OriGene.



ALK Luminex with 15B2 Capture ([TA801288]) and 1A4 Detection ([TA801287]) Antibodies. Substrate used: full length HEK293 cells expressed recombinant ALK protein ([TP322485]).



ALK Luminex with 15B2 Capture ([TA801288]) and 3E7 Detection ([TA801144]) Antibodies. Substrate used: full length HEK293 cells expressed recombinant ALK protein ([TP322485]).



ALK Luminex with 15B2 Capture ([TA801288]) and 1D9 Detection ([TA801141]) Antibodies. Substrate used: full length HEK293 cells expressed recombinant ALK protein ([TP322485]).