

## Product datasheet for **CF800765**

### SOAT 2 (SOAT2) Mouse Monoclonal Antibody [Clone ID: OTI2E12]

#### Product data:

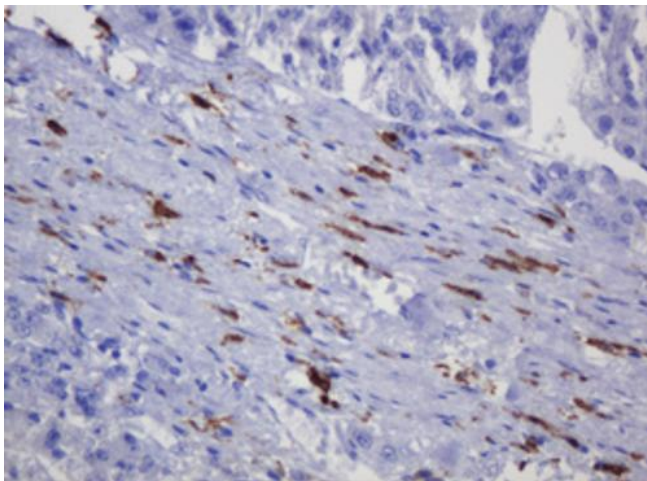
Product Type:	Primary Antibodies
Clone Name:	OTI2E12
Applications:	IHC
Recommended Dilution:	IHC 1:150
Reactivity:	Human
Host:	Mouse
Isotype:	IgG1
Clonality:	Monoclonal
Immunogen:	Human recombinant protein fragment corresponding to amino acids 1-120 of human SOAT2 (NP_003569) produced in E.coli.
Formulation:	Lyophilized powder (original buffer 1X PBS, pH 7.3, 8% trehalose)
Reconstitution Method:	For reconstitution, we recommend adding 100uL distilled water to a final antibody concentration of about 1 mg/mL. To use this carrier-free antibody for conjugation experiment, we strongly recommend performing another round of desalting process. (OriGene recommends Zeba Spin Desalting Columns, 7KMWCO from Thermo Scientific)
Purification:	Purified from mouse ascites fluids or tissue culture supernatant by affinity chromatography (protein A/G)
Conjugation:	Unconjugated
Storage:	Store at -20°C as received.
Stability:	Stable for 12 months from date of receipt.
Predicted Protein Size:	59.7 kDa
Gene Name:	sterol O-acyltransferase 2
Database Link:	<a href="#">NP_003569</a> <a href="#">Entrez Gene 8435 Human O75908</a>
Synonyms:	ACACT2; ACAT2; ARGP2
Protein Families:	Transmembrane



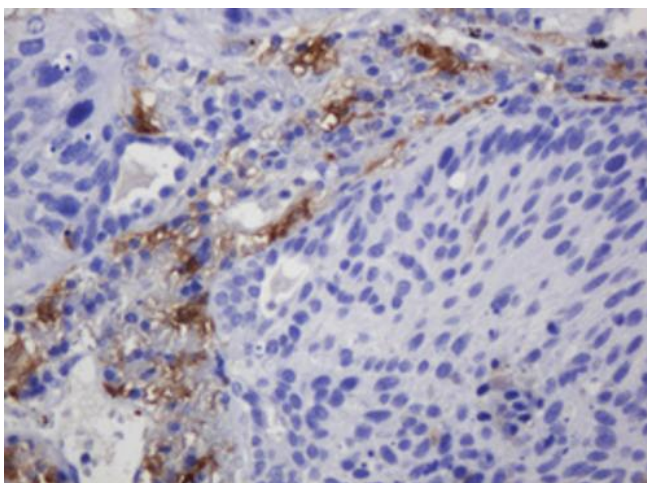
[View online »](#)

Protein Pathways: Steroid biosynthesis

### Product images:



Immunohistochemical staining of paraffin-embedded Carcinoma of Human liver tissue using anti-SOAT2 mouse monoclonal antibody. (Heat-induced epitope retrieval by 10mM citric buffer, pH6.0, 120°C for 3min, [TA800765])



Immunohistochemical staining of paraffin-embedded Carcinoma of Human lung tissue using anti-SOAT2 mouse monoclonal antibody. (Heat-induced epitope retrieval by 10mM citric buffer, pH6.0, 120°C for 3min, [TA800765])