

Product datasheet for **CF800299**

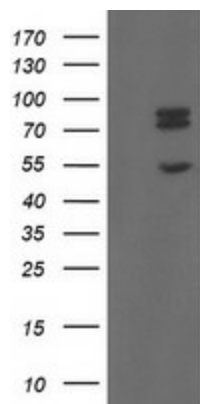
TLE 1 (TLE1) Mouse Monoclonal Antibody [Clone ID: OTI1H2]

Product data:

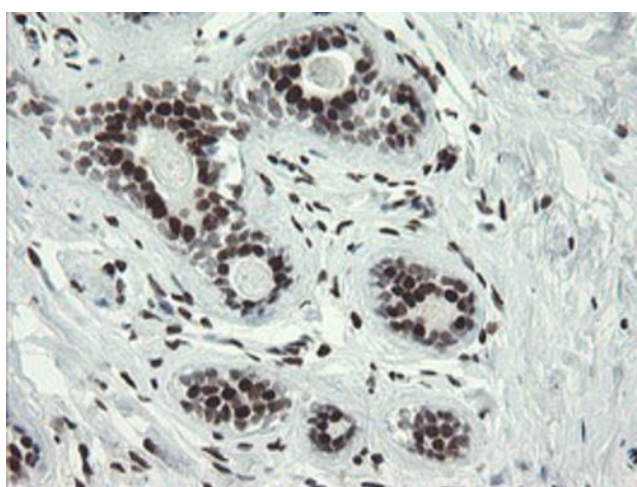
Product Type:	Primary Antibodies
Clone Name:	OTI1H2
Applications:	FC, IF, IHC, WB
Recommended Dilution:	WB 1:2000, IHC 1:150, IF 1:100, FLOW 1:100
Reactivity:	Human, Mouse, Rat
Host:	Mouse
Isotype:	IgG2b
Clonality:	Monoclonal
Immunogen:	Human recombinant protein fragment corresponding to amino acids 180-460 of human TLE1 (NP_005068) produced in E.coli.
Formulation:	Lyophilized powder (original buffer 1X PBS, pH 7.3, 8% trehalose)
Reconstitution Method:	For reconstitution, we recommend adding 100uL distilled water to a final antibody concentration of about 1 mg/mL. To use this carrier-free antibody for conjugation experiment, we strongly recommend performing another round of desalting process. (OriGene recommends Zeba Spin Desalting Columns, 7KMWCO from Thermo Scientific)
Purification:	Purified from mouse ascites fluids or tissue culture supernatant by affinity chromatography (protein A/G)
Conjugation:	Unconjugated
Storage:	Store at -20°C as received.
Stability:	Stable for 12 months from date of receipt.
Predicted Protein Size:	83 kDa
Gene Name:	TLE family member 1, transcriptional corepressor
Database Link:	NP_005068 Entrez Gene 21885 Mouse Entrez Gene 362533 Rat Entrez Gene 7088 Human Q04724
Synonyms:	ESG; ESG1; GRG1
Protein Families:	Transcription Factors



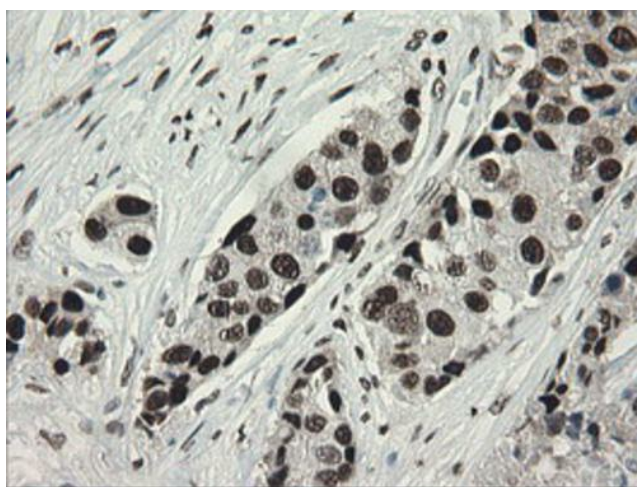
[View online »](#)

Product images:

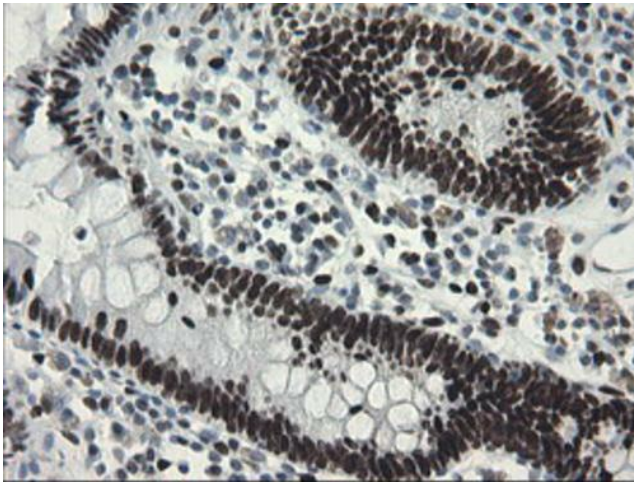
HEK293T cells were transfected with the pCMV6-ENTRY control (Left lane) or pCMV6-ENTRY TLE1 ([RC204037], Right lane) cDNA for 48 hrs and lysed. Equivalent amounts of cell lysates (5 ug per lane) were separated by SDS-PAGE and immunoblotted with anti-TLE1. Positive lysates [LY417561] (100ug) and [LC417561] (20ug) can be purchased separately from OriGene.



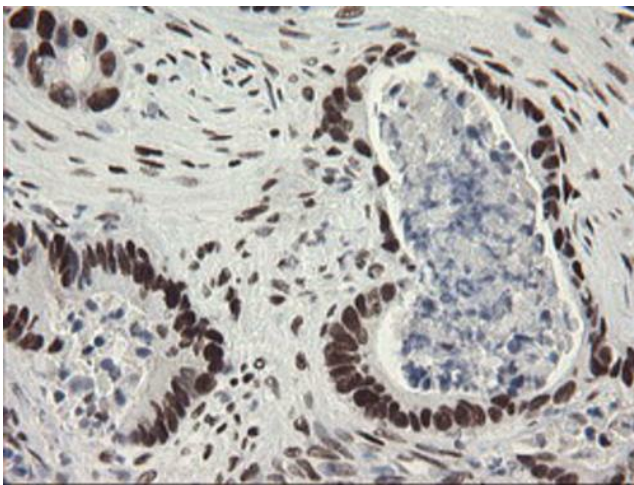
Immunohistochemical staining of paraffin-embedded Human breast tissue within the normal limits using anti-TLE1 mouse monoclonal antibody. (Heat-induced epitope retrieval by 10mM citric buffer, pH6.0, 100°C for 10min, [TA800299])



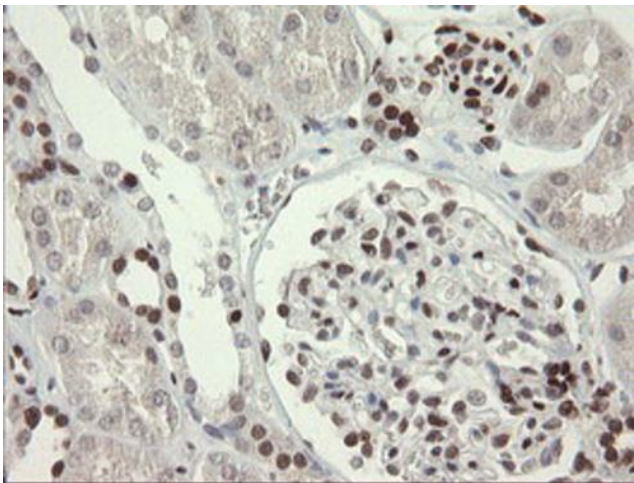
Immunohistochemical staining of paraffin-embedded Adenocarcinoma of Human breast tissue using anti-TLE1 mouse monoclonal antibody. (Heat-induced epitope retrieval by 10mM citric buffer, pH6.0, 100°C for 10min, [TA800299])



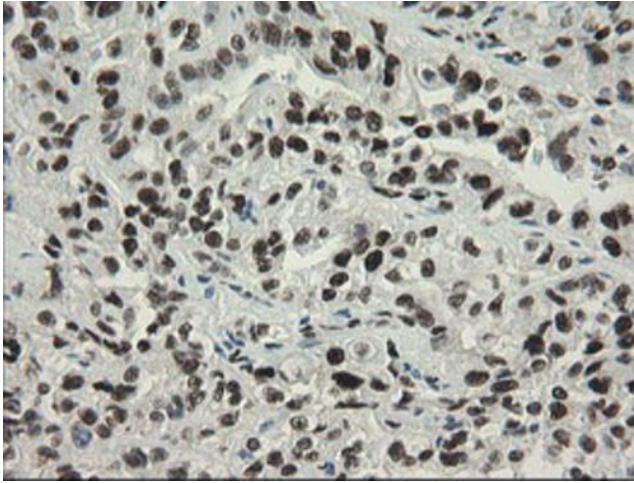
Immunohistochemical staining of paraffin-embedded Human colon tissue within the normal limits using anti-TLE1 mouse monoclonal antibody. (Heat-induced epitope retrieval by 10mM citric buffer, pH6.0, 100°C for 10min, [TA800299])



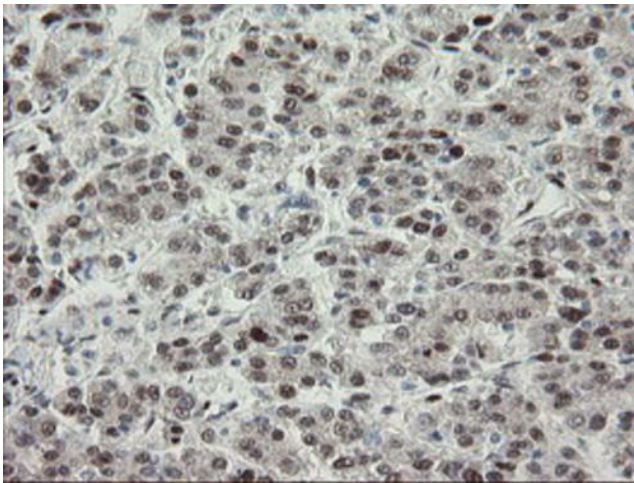
Immunohistochemical staining of paraffin-embedded Adenocarcinoma of Human colon tissue using anti-TLE1 mouse monoclonal antibody. (Heat-induced epitope retrieval by 10mM citric buffer, pH6.0, 100°C for 10min, [TA800299])



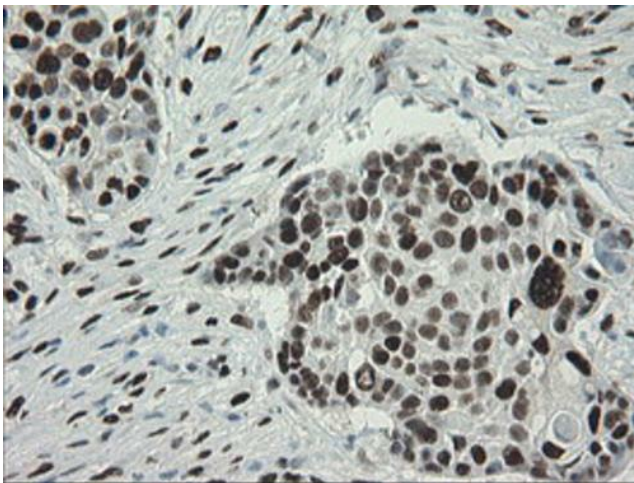
Immunohistochemical staining of paraffin-embedded Human Kidney tissue within the normal limits using anti-TLE1 mouse monoclonal antibody. (Heat-induced epitope retrieval by 10mM citric buffer, pH6.0, 100°C for 10min, [TA800299])



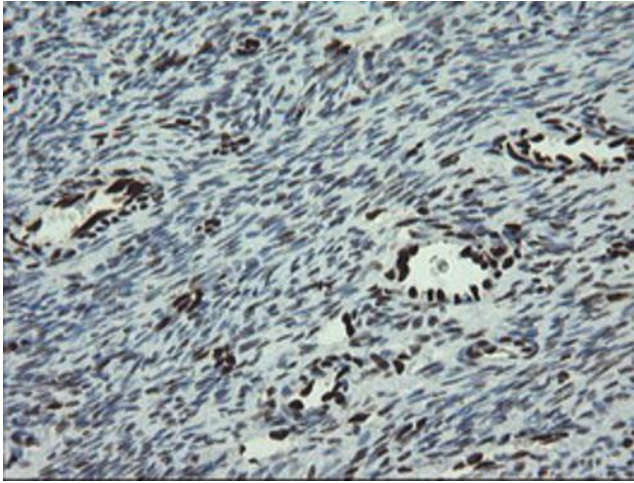
Immunohistochemical staining of paraffin-embedded Carcinoma of Human kidney tissue using anti-TLE1 mouse monoclonal antibody. (Heat-induced epitope retrieval by 10mM citric buffer, pH6.0, 100°C for 10min, [TA800299])



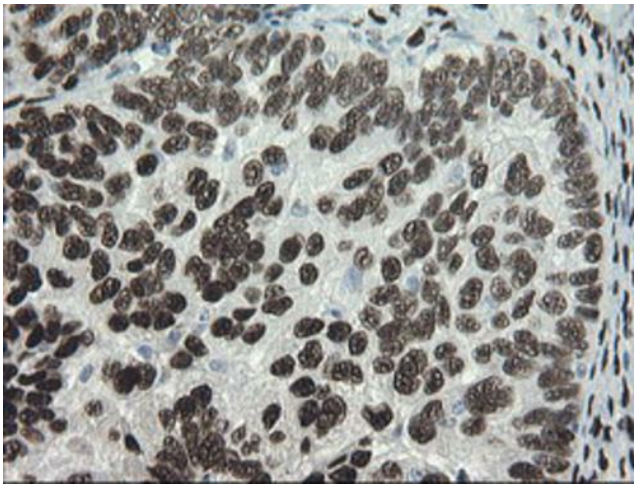
Immunohistochemical staining of paraffin-embedded Carcinoma of Human liver tissue using anti-TLE1 mouse monoclonal antibody. (Heat-induced epitope retrieval by 10mM citric buffer, pH6.0, 100°C for 10min, [TA800299])



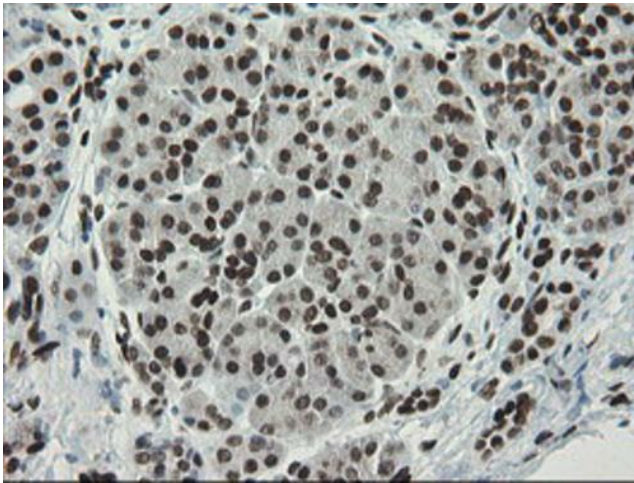
Immunohistochemical staining of paraffin-embedded Carcinoma of Human lung tissue using anti-TLE1 mouse monoclonal antibody. (Heat-induced epitope retrieval by 10mM citric buffer, pH6.0, 100°C for 10min, [TA800299])



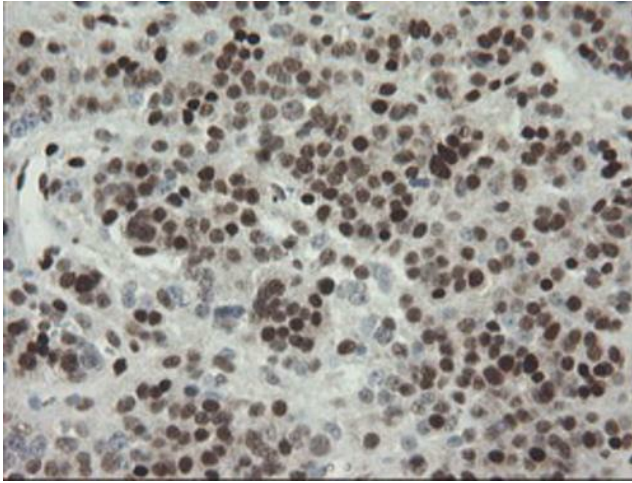
Immunohistochemical staining of paraffin-embedded Human Ovary tissue within the normal limits using anti-TLE1 mouse monoclonal antibody. (Heat-induced epitope retrieval by 10mM citric buffer, pH6.0, 100°C for 10min, [TA800299])



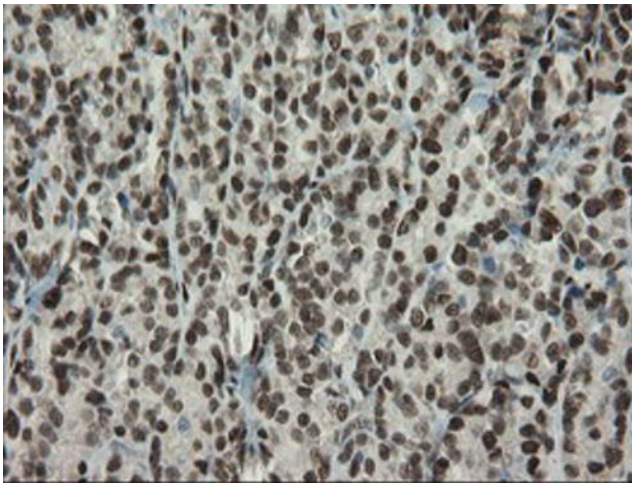
Immunohistochemical staining of paraffin-embedded Adenocarcinoma of Human ovary tissue using anti-TLE1 mouse monoclonal antibody. (Heat-induced epitope retrieval by 10mM citric buffer, pH6.0, 100°C for 10min, [TA800299])



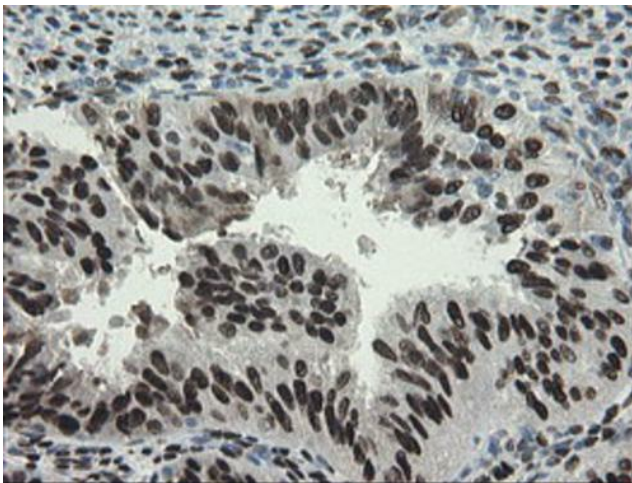
Immunohistochemical staining of paraffin-embedded Human pancreas tissue within the normal limits using anti-TLE1 mouse monoclonal antibody. (Heat-induced epitope retrieval by 10mM citric buffer, pH6.0, 100°C for 10min, [TA800299])



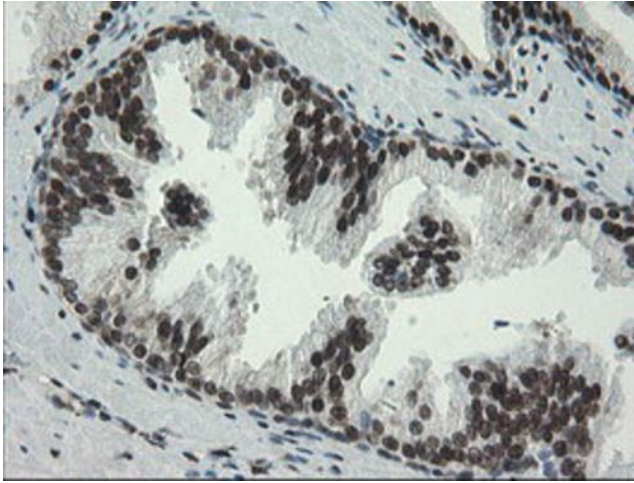
Immunohistochemical staining of paraffin-embedded Carcinoma of Human pancreas tissue using anti-TLE1 mouse monoclonal antibody. (Heat-induced epitope retrieval by 10mM citric buffer, pH6.0, 100°C for 10min, [TA800299])



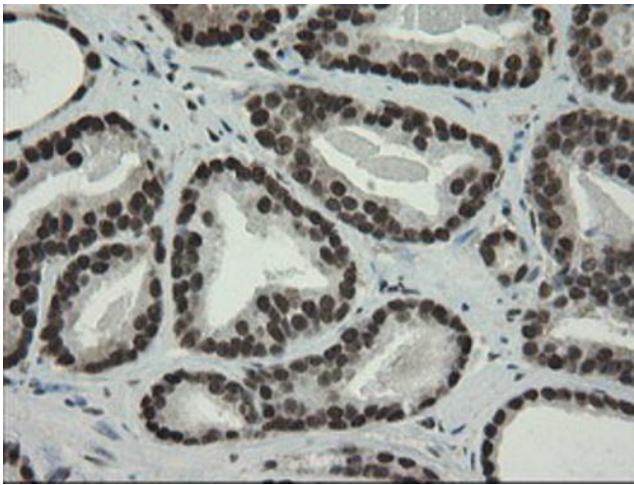
Immunohistochemical staining of paraffin-embedded Carcinoma of Human thyroid tissue using anti-TLE1 mouse monoclonal antibody. (Heat-induced epitope retrieval by 10mM citric buffer, pH6.0, 100°C for 10min, [TA800299])



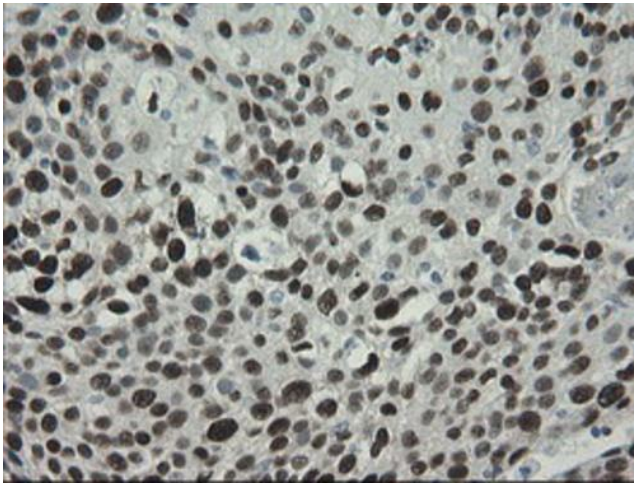
Immunohistochemical staining of paraffin-embedded Adenocarcinoma of Human endometrium tissue using anti-TLE1 mouse monoclonal antibody. (Heat-induced epitope retrieval by 10mM citric buffer, pH6.0, 100°C for 10min, [TA800299])



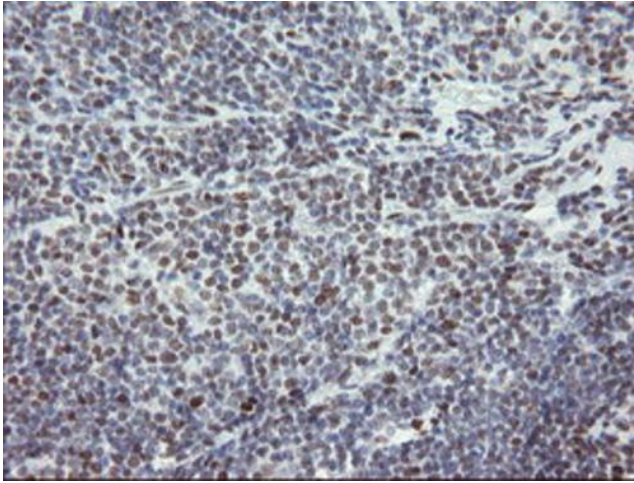
Immunohistochemical staining of paraffin-embedded Human prostate tissue within the normal limits using anti-TLE1 mouse monoclonal antibody. (Heat-induced epitope retrieval by 10mM citric buffer, pH6.0, 100°C for 10min, [TA800299])



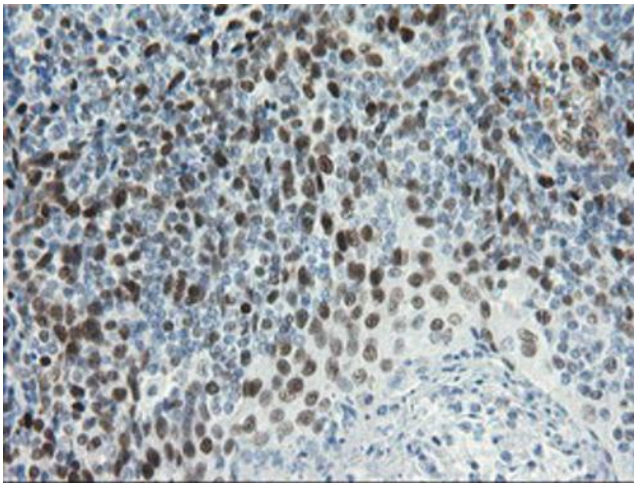
Immunohistochemical staining of paraffin-embedded Carcinoma of Human prostate tissue using anti-TLE1 mouse monoclonal antibody. (Heat-induced epitope retrieval by 10mM citric buffer, pH6.0, 100°C for 10min, [TA800299])



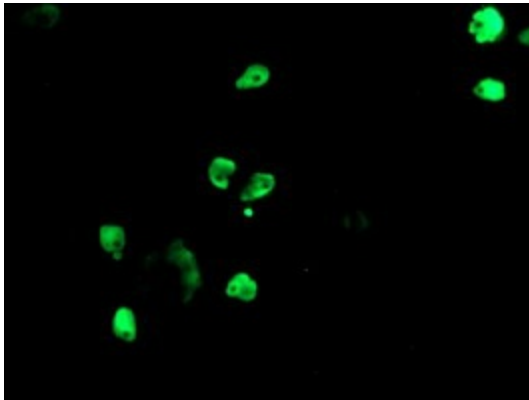
Immunohistochemical staining of paraffin-embedded Carcinoma of Human bladder tissue using anti-TLE1 mouse monoclonal antibody. (Heat-induced epitope retrieval by 10mM citric buffer, pH6.0, 100°C for 10min, [TA800299])



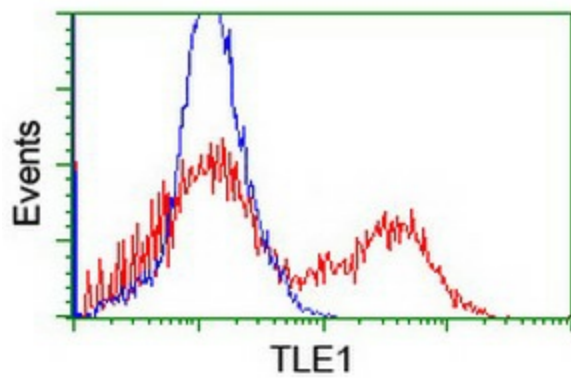
Immunohistochemical staining of paraffin-embedded Human lymphoma tissue using anti-TLE1 mouse monoclonal antibody. (Heat-induced epitope retrieval by 10mM citric buffer, pH6.0, 100°C for 10min, [TA800299])



Immunohistochemical staining of paraffin-embedded Human tonsil within the normal limits using anti-TLE1 mouse monoclonal antibody. (Heat-induced epitope retrieval by 10mM citric buffer, pH6.0, 100°C for 10min, [TA800299])



Anti-TLE1 mouse monoclonal antibody ([TA800299]) immunofluorescent staining of COS7 cells transiently transfected by pCMV6-ENTRY TLE1 ([RC204037]).



HEK293T cells transfected with either [RC204037] overexpress plasmid (Red) or empty vector control plasmid (Blue) were immunostained by anti-TLE1 antibody ([TA800299]), and then analyzed by flow cytometry.