

## Product datasheet for **CF800107**

### Proteasome subunit alpha type 6 (PSMA6) Mouse Monoclonal Antibody [Clone ID: OTI3B8]

#### Product data:

Product Type:	Primary Antibodies
Clone Name:	OTI3B8
Applications:	IHC, WB
Recommended Dilution:	WB 1:500, IHC 1:150
Reactivity:	Human, Mouse, Rat
Host:	Mouse
Isotype:	IgG1
Clonality:	Monoclonal
Immunogen:	Full length human recombinant protein of human PSMA6 (NP_002782) produced in E.coli.
Formulation:	Lyophilized powder (original buffer 1X PBS, pH 7.3, 8% trehalose)
Reconstitution Method:	For reconstitution, we recommend adding 100uL distilled water to a final antibody concentration of about 1 mg/mL. To use this carrier-free antibody for conjugation experiment, we strongly recommend performing another round of desalting process. (OriGene recommends Zeba Spin Desalting Columns, 7KMWCO from Thermo Scientific)
Purification:	Purified from mouse ascites fluids or tissue culture supernatant by affinity chromatography (protein A/G)
Conjugation:	Unconjugated
Storage:	Store at -20°C as received.
Stability:	Stable for 12 months from date of receipt.
Predicted Protein Size:	27.2 kDa
Gene Name:	proteasome 20S subunit alpha 6
Database Link:	<a href="#">NP_002782</a> <a href="#">Entrez Gene 26443 Mouse</a> <a href="#">Entrez Gene 29673 Rat</a> <a href="#">Entrez Gene 5687 Human</a> <a href="#">P60900</a>



[View online »](#)

**Background:**

The proteasome is a multicatalytic proteinase complex with a highly ordered ring-shaped 20S core structure. The core structure is composed of 4 rings of 28 non-identical subunits; 2 rings are composed of 7 alpha subunits and 2 rings are composed of 7 beta subunits. Proteasomes are distributed throughout eukaryotic cells at a high concentration and cleave peptides in an ATP/ubiquitin-dependent process in a non-lysosomal pathway. An essential function of a modified proteasome, the immunoproteasome, is the processing of class I MHC peptides. This gene encodes a member of the peptidase T1A family, that is a 20S core alpha subunit. A pseudogene has been identified on the Y chromosome. [provided by RefSeq]

**Synonyms:**

IOTA; p27K; PROS27

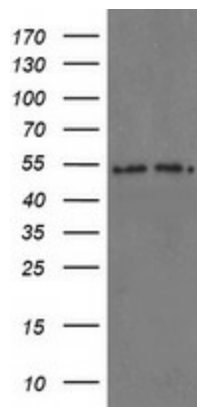
**Protein Families:**

Druggable Genome, Protease, Stem cell - Pluripotency

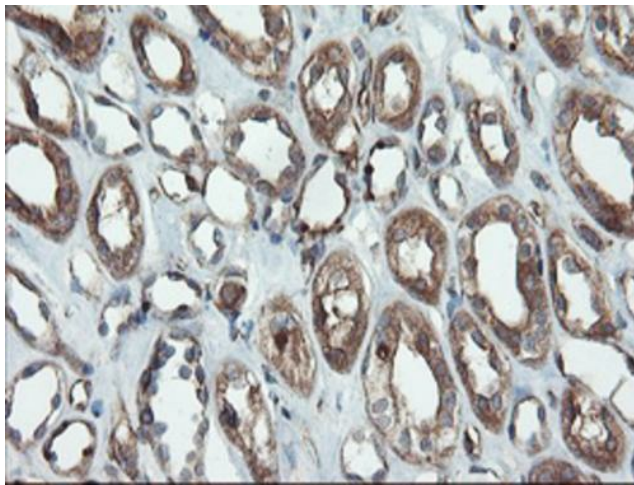
**Protein Pathways:**

Proteasome

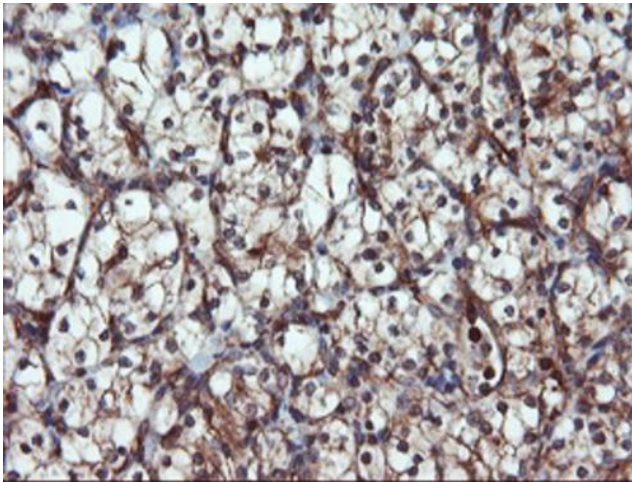
**Product images:**



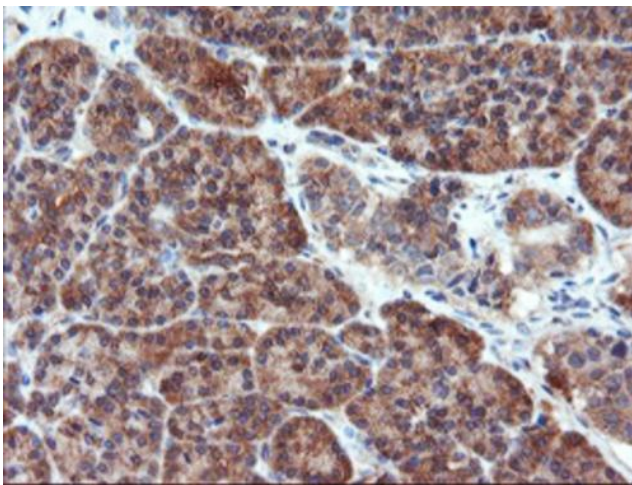
HEK293T cells were transfected with the pCMV6-ENTRY control (Left lane) or pCMV6-ENTRY PSMA6 [RC209976], Right lane) cDNA for 48 hrs and lysed. Equivalent amounts of cell lysates (5 ug per lane) were separated by SDS-PAGE and immunoblotted with anti-PSMA6. Positive lysates [LY419119] (100ug) and [LC419119] (20ug) can be purchased separately from OriGene.



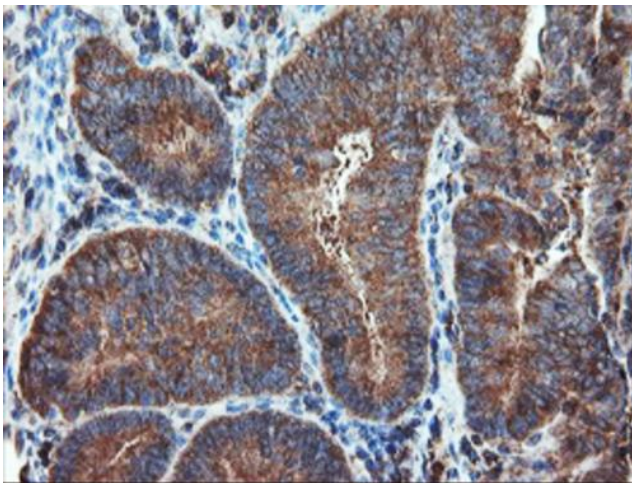
Immunohistochemical staining of paraffin-embedded Human Kidney tissue within the normal limits using anti-PSMA6 mouse monoclonal antibody. (Heat-induced epitope retrieval by 10mM citric buffer, pH6.0, 100°C for 10min, [TA800107])



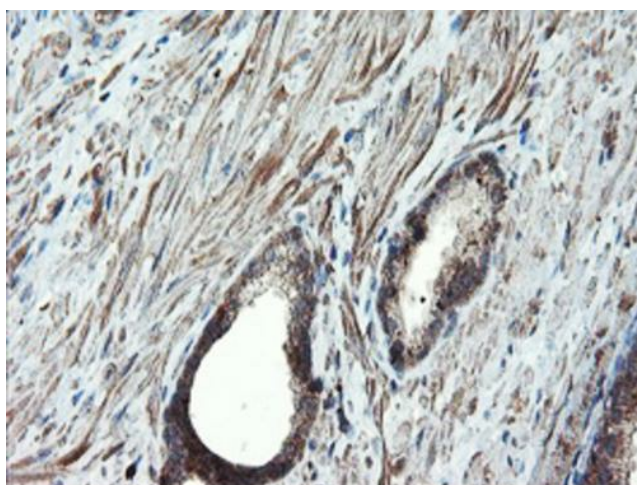
Immunohistochemical staining of paraffin-embedded Carcinoma of Human kidney tissue using anti-PSMA6 mouse monoclonal antibody. (Heat-induced epitope retrieval by 10mM citric buffer, pH6.0, 100°C for 10min, [TA800107])



Immunohistochemical staining of paraffin-embedded Human pancreas tissue within the normal limits using anti-PSMA6 mouse monoclonal antibody. (Heat-induced epitope retrieval by 10mM citric buffer, pH6.0, 100°C for 10min, [TA800107])



Immunohistochemical staining of paraffin-embedded Adenocarcinoma of Human endometrium tissue using anti-PSMA6 mouse monoclonal antibody. (Heat-induced epitope retrieval by 10mM citric buffer, pH6.0, 100°C for 10min, [TA800107])



Immunohistochemical staining of paraffin-embedded Carcinoma of Human prostate tissue using anti-PSMA6 mouse monoclonal antibody. (Heat-induced epitope retrieval by 10mM citric buffer, pH6.0, 100°C for 10min, [TA800107])