

## Product datasheet for **CF507155**

### Fibrinogen gamma chain (FGG) Mouse Monoclonal Antibody [Clone ID: OTI5C9]

#### Product data:

Product Type:	Primary Antibodies
Clone Name:	OTI5C9
Applications:	IHC, WB
Recommended Dilution:	WB 1:400~4000, IHC 1:150
Reactivity:	Human, Dog, Rat, Monkey, Mouse
Host:	Mouse
Isotype:	IgG1
Clonality:	Monoclonal
Immunogen:	Full length human recombinant protein of human FGG(NP_000500) produced in HEK293T cell.
Formulation:	Lyophilized powder (original buffer 1X PBS, pH 7.3, 8% trehalose)
Reconstitution Method:	For reconstitution, we recommend adding 100uL distilled water to a final antibody concentration of about 1 mg/mL. To use this carrier-free antibody for conjugation experiment, we strongly recommend performing another round of desalting process. (OriGene recommends Zeba Spin Desalting Columns, 7KMWCO from Thermo Scientific)
Purification:	Purified from mouse ascites fluids or tissue culture supernatant by affinity chromatography (protein A/G)
Conjugation:	Unconjugated
Storage:	Store at -20°C as received.
Stability:	Stable for 12 months from date of receipt.
Predicted Protein Size:	46.4 kDa
Gene Name:	fibrinogen gamma chain
Database Link:	<a href="#">NP_000500</a> <a href="#">Entrez Gene 24367 Rat</a> <a href="#">Entrez Gene 99571 Mouse</a> <a href="#">Entrez Gene 475474 Dog</a> <a href="#">Entrez Gene 698363 Monkey</a> <a href="#">Entrez Gene 2266 Human</a> <a href="#">P02679</a>



[View online »](#)

**Background:**

The protein encoded by this gene is the gamma component of fibrinogen, a blood-borne glycoprotein comprised of three pairs of nonidentical polypeptide chains. Following vascular injury, fibrinogen is cleaved by thrombin to form fibrin which is the most abundant component of blood clots. In addition, various cleavage products of fibrinogen and fibrin regulate cell adhesion and spreading, display vasoconstrictor and chemotactic activities, and are mitogens for several cell types. Mutations in this gene lead to several disorders, including dysfibrinogenemia, hypofibrinogenemia and thrombophilia. Alternative splicing results in two transcript variants encoding different isoforms. [provided by RefSeq, Jul

**Synonyms:**

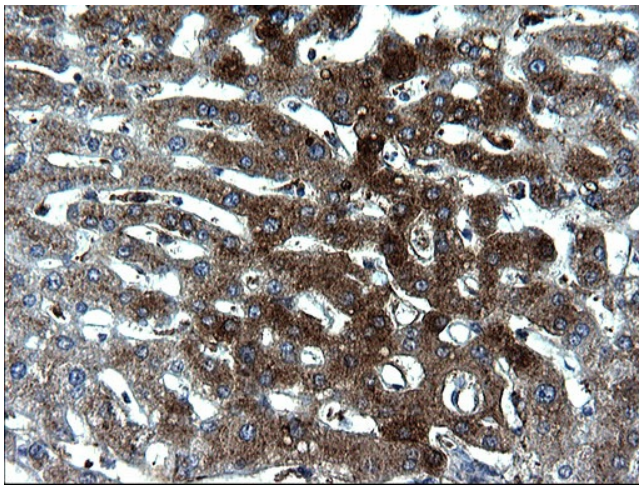
fibrinogen; fibrinogen gamma chain; gamma chain; gamma polypeptide

**Protein Families:**

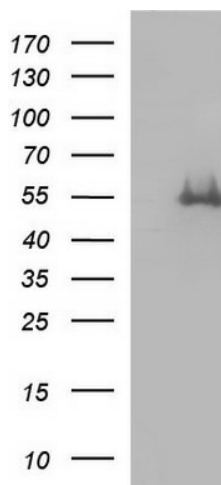
Druggable Genome, Secreted Protein, Transmembrane

**Protein Pathways:**

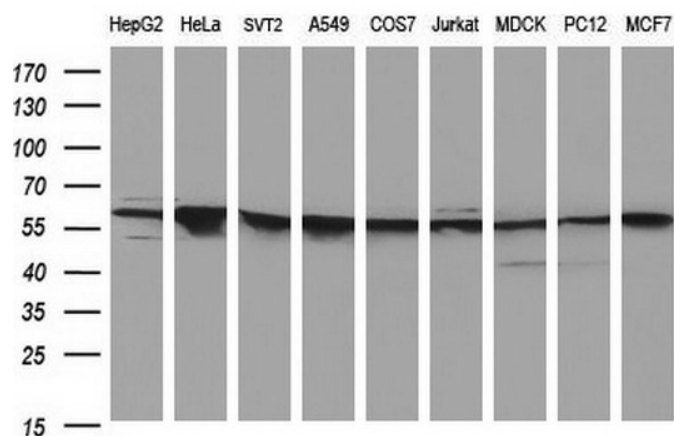
Complement and coagulation cascades

**Product images:**


Immunohistochemical staining of paraffin-embedded Human liver tissue within the normal limits using anti-FGG mouse monoclonal antibody. (Heat-induced epitope retrieval by 1mM EDTA in 10mM Tris, pH8.5, 120°C for 3min, [TA507155])



HEK293T cells were transfected with the pCMV6-ENTRY control (Left lane) or pCMV6-ENTRY FGG ([RC202770], Right lane) cDNA for 48 hrs and lysed. Equivalent amounts of cell lysates (5 ug per lane) were separated by SDS-PAGE and immunoblotted with anti-FGG. Positive lysates [LY400173] (100ug) and [LC400173] (20ug) can be purchased separately from OriGene.



Western blot analysis of extracts (35ug) from 9 different cell lines by using anti-FGG monoclonal antibody (HepG2: human; HeLa: human; SVT2: mouse; A549: human; COS7: monkey; Jurkat: human; MDCK: canine; PC12: rat; MCF7: human).