

## Product datasheet for **CF507070**

### MT (MCAT) Mouse Monoclonal Antibody [Clone ID: OTI2B7]

#### Product data:

Product Type:	Primary Antibodies
Clone Name:	OTI2B7
Applications:	IF, WB
Recommended Dilution:	WB 1:1000 -1:4000, IF 1:100
Reactivity:	Human
Host:	Mouse
Isotype:	IgG2a
Clonality:	Monoclonal
Immunogen:	Full length human recombinant protein of human MCAT(NP_775738) produced in HEK293T cell.
Formulation:	Lyophilized powder (original buffer 1X PBS, pH 7.3, 8% trehalose)
Reconstitution Method:	For reconstitution, we recommend adding 100uL distilled water to a final antibody concentration of about 1 mg/mL. To use this carrier-free antibody for conjugation experiment, we strongly recommend performing another round of desalting process. (OriGene recommends Zeba Spin Desalting Columns, 7KMWCO from Thermo Scientific)
Purification:	Purified from mouse ascites fluids or tissue culture supernatant by affinity chromatography (protein A/G)
Conjugation:	Unconjugated
Storage:	Store at -20°C as received.
Stability:	Stable for 12 months from date of receipt.
Predicted Protein Size:	40.6 kDa
Gene Name:	malonyl-CoA-acyl carrier protein transacylase
Database Link:	<a href="#">NP_775738</a> <a href="#">Entrez Gene 27349 Human</a> <a href="#">Q8IVS2</a>



[View online »](#)

**Background:**

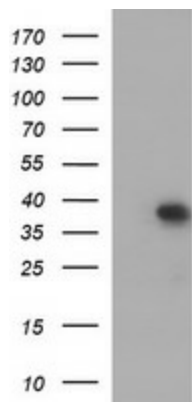
The protein encoded by this gene is found exclusively in the mitochondrion, where it catalyzes the transfer of a malonyl group from malonyl-CoA to the mitochondrial acyl carrier protein. The encoded protein may be part of a fatty acid synthase complex that is more like the type II prokaryotic and plastid complexes rather than the type I human cytosolic complex. Alternative splicing results in multiple transcript variants encoding different isoforms. [provided by RefSeq, Mar 2012]

**Synonyms:**

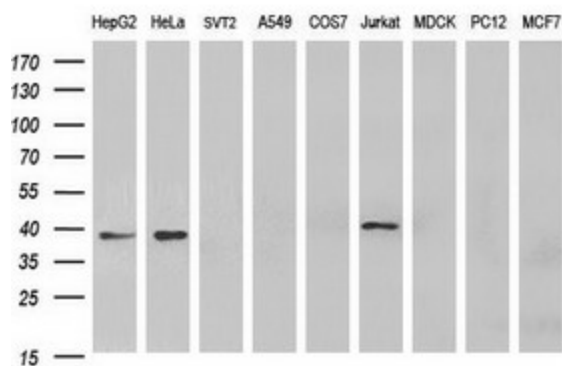
fabD; FASN2C; MCT; MT; NET62

**Protein Pathways:**

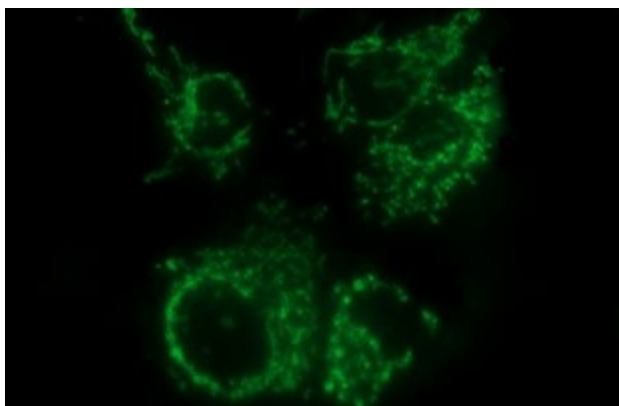
Fatty acid biosynthesis, Metabolic pathways

**Product images:**


HEK293T cells were transfected with the pCMV6-ENTRY control (Cat# [PS100001], Left lane) or pCMV6-ENTRY MCAT (Cat# [RC207943], Right lane) cDNA for 48 hrs and lysed. Equivalent amounts of cell lysates (5 ug per lane) were separated by SDS-PAGE and immunoblotted with anti-MCAT (Cat# [TA507070]). Positive lysates [LY406620] (100ug) and [LC406620] (20ug) can be purchased separately from OriGene.



Western blot analysis of extracts (35ug) from 9 different cell lines by using anti-MCAT monoclonal antibody at 1:400 dilution (HepG2: human; HeLa: human; SVT2: mouse; A549: human; COS7: monkey; Jurkat: human; MDCK: canine; PC12: rat; MCF7: human).



Immunofluorescent staining of COS7 cells transiently transfected by pCMV6-ENTRY MCAT ([RC207943]) using Anti-MCAT mouse monoclonal antibody ([TA507070]) at 1:100 dilution.