

## Product datasheet for **CF506947**

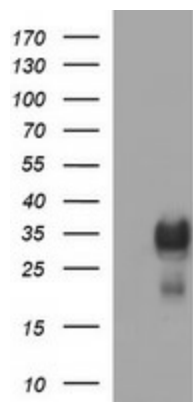
### **TXNDC (TMX1) Mouse Monoclonal Antibody [Clone ID: OTI1A4]**

#### **Product data:**

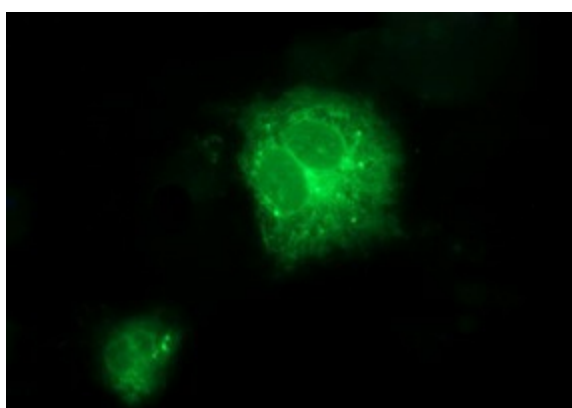
<b>Product Type:</b>	Primary Antibodies
<b>Clone Name:</b>	OTI1A4
<b>Applications:</b>	IF, WB
<b>Recommended Dilution:</b>	WB 1:4000, IF 1:100
<b>Reactivity:</b>	Human
<b>Host:</b>	Mouse
<b>Isotype:</b>	IgG1
<b>Clonality:</b>	Monoclonal
<b>Immunogen:</b>	Full length human recombinant protein of human TMX1(NP_110382) produced in HEK293T cell.
<b>Formulation:</b>	Lyophilized powder (original buffer 1X PBS, pH 7.3, 8% trehalose)
<b>Reconstitution Method:</b>	For reconstitution, we recommend adding 100uL distilled water to a final antibody concentration of about 1 mg/mL. To use this carrier-free antibody for conjugation experiment, we strongly recommend performing another round of desalting process. (OriGene recommends Zeba Spin Desalting Columns, 7KMWCO from Thermo Scientific)
<b>Purification:</b>	Purified from mouse ascites fluids or tissue culture supernatant by affinity chromatography (protein A/G)
<b>Conjugation:</b>	Unconjugated
<b>Storage:</b>	Store at -20°C as received.
<b>Stability:</b>	Stable for 12 months from date of receipt.
<b>Predicted Protein Size:</b>	31.6 kDa
<b>Gene Name:</b>	thioredoxin related transmembrane protein 1
<b>Database Link:</b>	<a href="#">NP_110382</a> <a href="#">Entrez Gene 81542 Human</a> <a href="#">Q9H3N1</a>
<b>Synonyms:</b>	PDIA11; TMX; TXNDC; TXNDC1
<b>Protein Families:</b>	Druggable Genome, Transcription Factors, Transmembrane



[View online »](#)

**Product images:**

HEK293T cells were transfected with the pCMV6-ENTRY control (Left lane) or pCMV6-ENTRY TMX1 ([RC206187], Right lane) cDNA for 48 hrs and lysed. Equivalent amounts of cell lysates (5 ug per lane) were separated by SDS-PAGE and immunoblotted with anti-TMX1. Positive lysates [LY410692] (100ug) and [LC410692] (20ug) can be purchased separately from OriGene.



Anti-TMX1 mouse monoclonal antibody ([TA506947]) immunofluorescent staining of COS7 cells transiently transfected by pCMV6-ENTRY TMX1 ([RC206187]).