

Product datasheet for **CF506814**

Placental lactogen (CSH1) Mouse Monoclonal Antibody [Clone ID: OT11C9]

Product data:

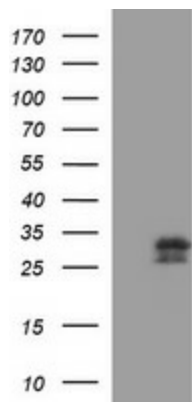
| | |
|-------------------------|--|
| Product Type: | Primary Antibodies |
| Clone Name: | OT11C9 |
| Applications: | IF, IHC, WB |
| Recommended Dilution: | WB 1:1000, IHC 1:150 |
| Reactivity: | Human |
| Host: | Mouse |
| Isotype: | IgG2a |
| Clonality: | Monoclonal |
| Immunogen: | Full length human recombinant protein of human CSH1(NP_072166) produced in HEK293T cell. |
| Formulation: | Lyophilized powder (original buffer 1X PBS, pH 7.3, 8% trehalose) |
| Reconstitution Method: | For reconstitution, we recommend adding 100uL distilled water to a final antibody concentration of about 1 mg/mL. To use this carrier-free antibody for conjugation experiment, we strongly recommend performing another round of desalting process. (OriGene recommends Zeba Spin Desalting Columns, 7KMWCO from Thermo Scientific) |
| Purification: | Purified from mouse ascites fluids or tissue culture supernatant by affinity chromatography (protein A/G) |
| Conjugation: | Unconjugated |
| Storage: | Store at -20°C as received. |
| Stability: | Stable for 12 months from date of receipt. |
| Predicted Protein Size: | 28.6 kDa |
| Gene Name: | chorionic somatomammotropin hormone 1 |
| Database Link: | NP_072166 Entrez Gene 1442 Human PODML2 |
| Synonyms: | CSA; CSH2; CSMT; FLJ75407; PL |
| Protein Families: | Druggable Genome |



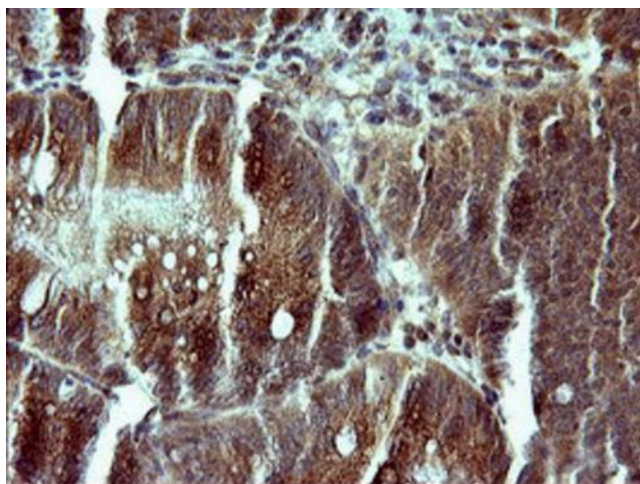
[View online »](#)

Protein Pathways: Jak-STAT signaling pathway, Neuroactive ligand-receptor interaction

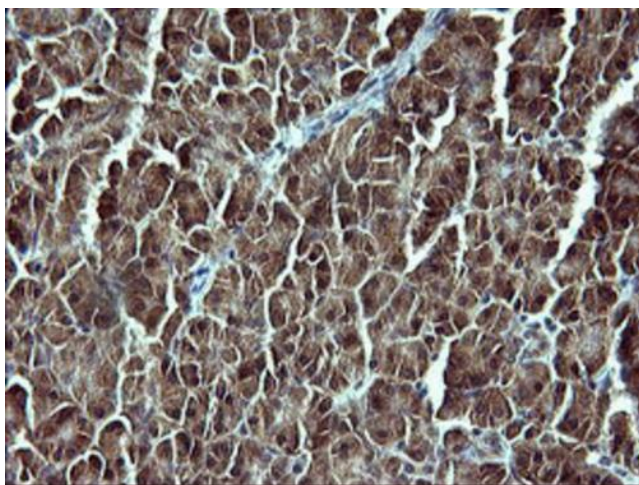
Product images:



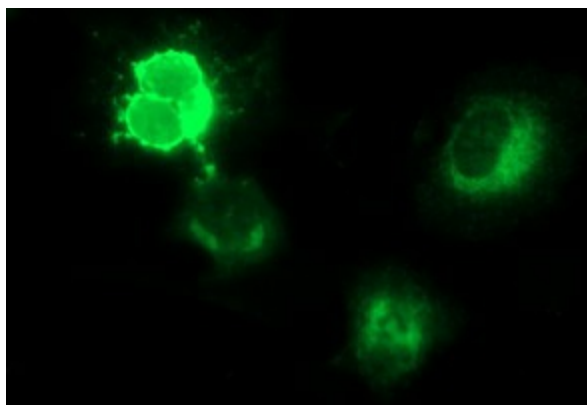
HEK293T cells were transfected with the pCMV6-ENTRY control (Left lane) or pCMV6-ENTRY CSH1 ([RC223244], Right lane) cDNA for 48 hrs and lysed. Equivalent amounts of cell lysates (5 ug per lane) were separated by SDS-PAGE and immunoblotted with anti-CSH1 ([TA506814]). Positive lysates [LY411615] (100ug) and [LC411615] (20ug) can be purchased separately from OriGene.



Immunohistochemical staining of paraffin-embedded Carcinoma of Human pancreas tissue using anti-CSH1 mouse monoclonal antibody. (Heat-induced epitope retrieval by 10mM citric buffer, pH6.0, 120°C for 3min, [TA506814])



Immunohistochemical staining of paraffin-embedded Human pancreas tissue within the normal limits using anti-CSH1 mouse monoclonal antibody. (Heat-induced epitope retrieval by 10mM citric buffer, pH6.0, 120°C for 3min, [TA506814])



Anti-CSH1 mouse monoclonal antibody ([TA506814]) immunofluorescent staining of COS7 cells transiently transfected by pCMV6-ENTRY CSH1 ([RC223244]).